

CYP20A1 Antibody (Center)
Purified Rabbit Polyclonal Antibody (Pab)
Catalog # AP12634c**Specification**

CYP20A1 Antibody (Center) - Product Information

Application	FC, WB,E
Primary Accession	Q6UW02
Other Accession	NP_803882.1
Reactivity	Human
Host	Rabbit
Clonality	Polyclonal
Isotype	Rabbit IgG
Calculated MW	52432
Antigen Region	221-250

CYP20A1 Antibody (Center) - Additional Information**Gene ID** 57404**Other Names**

Cytochrome P450 20A1, 114--, CYP20A1

Target/Specificity

This CYP20A1 antibody is generated from rabbits immunized with a KLH conjugated synthetic peptide between 221-250 amino acids from the Central region of human CYP20A1.

Dilution

FC~~1:10~50

WB~~1:1000

E~~Use at an assay dependent concentration.

Format

Purified polyclonal antibody supplied in PBS with 0.09% (W/V) sodium azide. This antibody is prepared by Saturated Ammonium Sulfate (SAS) precipitation followed by dialysis against PBS.

Storage

Maintain refrigerated at 2-8°C for up to 2 weeks. For long term storage store at -20°C in small aliquots to prevent freeze-thaw cycles.

Precautions

CYP20A1 Antibody (Center) is for research use only and not for use in diagnostic or therapeutic procedures.

CYP20A1 Antibody (Center) - Protein Information**Name** CYP20A1

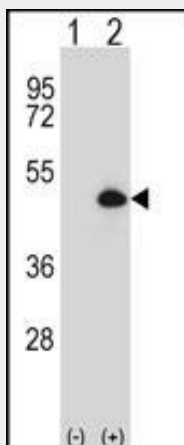
Cellular Location

Membrane; Single-pass membrane protein

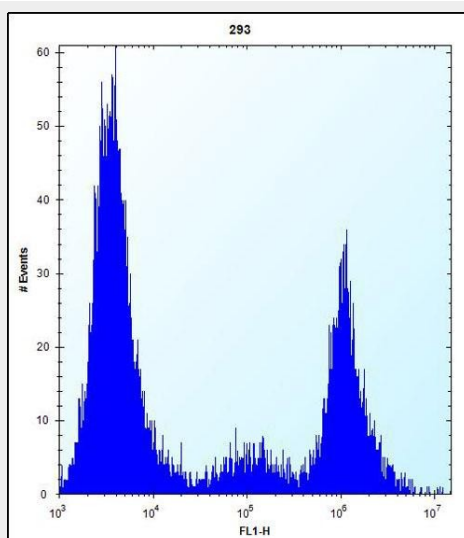
CYP20A1 Antibody (Center) - Protocols

Provided below are standard protocols that you may find useful for product applications.

- [Western Blot](#)
- [Blocking Peptides](#)
- [Dot Blot](#)
- [Immunohistochemistry](#)
- [Immunofluorescence](#)
- [Immunoprecipitation](#)
- [Flow Cytometry](#)
- [Cell Culture](#)

CYP20A1 Antibody (Center) - Images

Western blot analysis of CYP20A1 (arrow) using rabbit polyclonal CYP20A1 Antibody (Center) (Cat. #AP12634c). 293 cell lysates (2 ug/lane) either nontransfected (Lane 1) or transiently transfected (Lane 2) with the CYP20A1 gene.



CYP20A1 Antibody (Center) (Cat. #AP12634c) flow cytometric analysis of 293 cells (right histogram) compared to a negative control cell (left histogram). FITC-conjugated goat-anti-rabbit secondary antibodies were used for the analysis.

CYP20A1 Antibody (Center) - Background

This gene encodes a member of the cytochrome P450 superfamily of enzymes. The cytochrome P450 proteins are monooxygenases that catalyze many reactions involved in drug metabolism and synthesis of cholesterol, steroids and other lipids. This protein lacks one amino acid of the conserved heme binding site. It also lacks the conserved I-helix motif AGX(D,E)T, suggesting that its substrate may carry its own oxygen. [provided by RefSeq].

CYP20A1 Antibody (Center) - References

Ross, C.J., et al. Nat. Genet. 41(12):1345-1349(2009)
Jiang, J.H., et al. Ai Zheng 23(6):672-677(2004)
Nelson, D.R., et al. Pharmacogenetics 14(1):1-18(2004)
Werck-Reichhart, D., et al. Genome Biol. 1 (6), REVIEWS3003 (2000) :
Smith, G., et al. Xenobiotica 28(12):1129-1165(1998)