

IRF4 Antibody (Center)
Purified Rabbit Polyclonal Antibody (Pab)
Catalog # AP12637c**Specification**

IRF4 Antibody (Center) - Product Information

Application	WB, FC,E
Primary Accession	Q15306
Other Accession	NP_001182215.1 , NP_002451.2
Reactivity	Human
Host	Rabbit
Clonality	Polyclonal
Isotype	Rabbit IgG
Calculated MW	51772
Antigen Region	164-191

IRF4 Antibody (Center) - Additional Information**Gene ID** 3662**Other Names**

Interferon regulatory factor 4, IRF-4, Lymphocyte-specific interferon regulatory factor, LSIRF, Multiple myeloma oncogene 1, NF-EM5, IRF4, MUM1

Target/Specificity

This IRF4 antibody is generated from rabbits immunized with a KLH conjugated synthetic peptide between 164-191 amino acids from the Central region of human IRF4.

Dilution

WB~~1:1000
FC~~1:10~50

Format

Purified polyclonal antibody supplied in PBS with 0.09% (W/V) sodium azide. This antibody is prepared by Saturated Ammonium Sulfate (SAS) precipitation followed by dialysis against PBS.

Storage

Maintain refrigerated at 2-8°C for up to 2 weeks. For long term storage store at -20°C in small aliquots to prevent freeze-thaw cycles.

Precautions

IRF4 Antibody (Center) is for research use only and not for use in diagnostic or therapeutic procedures.

IRF4 Antibody (Center) - Protein Information**Name** IRF4

Synonyms MUM1

Function Transcriptional activator. Binds to the interferon-stimulated response element (ISRE) of the MHC class I promoter. Binds the immunoglobulin lambda light chain enhancer, together with PU.1. Probably plays a role in ISRE-targeted signal transduction mechanisms specific to lymphoid cells. Involved in CD8(+) dendritic cell differentiation by forming a complex with the BATF-JUNB heterodimer in immune cells, leading to recognition of AICE sequence (5'-TGAnTCA/GAAA- 3'), an immune-specific regulatory element, followed by cooperative binding of BATF and IRF4 and activation of genes (By similarity).

Cellular Location

Nucleus.

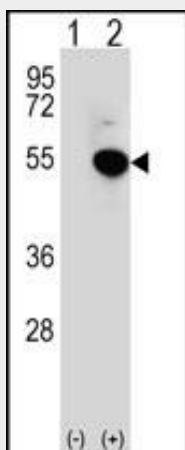
Tissue Location

Lymphoid cells.

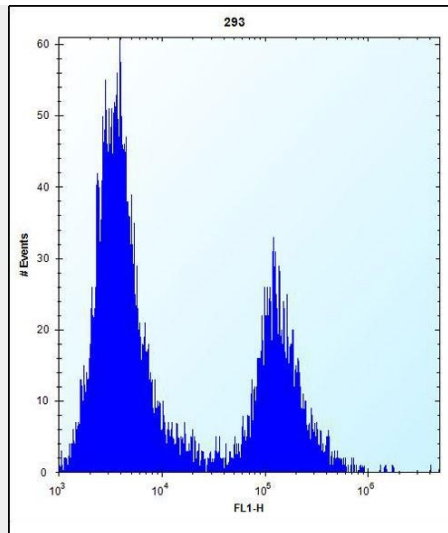
IRF4 Antibody (Center) - Protocols

Provided below are standard protocols that you may find useful for product applications.

- [Western Blot](#)
- [Blocking Peptides](#)
- [Dot Blot](#)
- [Immunohistochemistry](#)
- [Immunofluorescence](#)
- [Immunoprecipitation](#)
- [Flow Cytometry](#)
- [Cell Culture](#)

IRF4 Antibody (Center) - Images

Western blot analysis of IRF4 (arrow) using rabbit polyclonal IRF4 Antibody (Center) (Cat. #AP12637c). 293 cell lysates (2 ug/lane) either nontransfected (Lane 1) or transiently transfected (Lane 2) with the IRF4 gene.



IRF4 Antibody (Center) (Cat. #AP12637c) flow cytometric analysis of 293 cells (right histogram) compared to a negative control cell (left histogram). FITC-conjugated goat-anti-rabbit secondary antibodies were used for the analysis.

IRF4 Antibody (Center) - Background

The protein encoded by this gene belongs to the IRF (interferon regulatory factor) family of transcription factors, characterized by a unique tryptophan pentad repeat DNA-binding domain. The IRFs are important in the regulation of interferons in response to infection by virus, and in the regulation of interferon-inducible genes. This family member is lymphocyte specific and negatively regulates Toll-like-receptor (TLR) signaling that is central to the activation of innate and adaptive immune systems. A chromosomal translocation involving this gene and the IgH locus, t(6;14)(p25;q32), may be a cause of multiple myeloma. Alternatively spliced transcript variants have been found for this gene.

IRF4 Antibody (Center) - References

Ucisik-Akkaya, E., et al. Mol. Hum. Reprod. 16(10):770-777(2010)
Staudt, V., et al. Immunity 33(2):192-202(2010)
Newton-Bishop, J.A., et al. Cancer Epidemiol. Biomarkers Prev. 19(8):2043-2054(2010)
Duffy, D.L., et al. Am. J. Hum. Genet. 87(1):6-16(2010)
Eriksson, N., et al. PLoS Genet. 6 (6), E1000993 (2010) :