

ANGPTL7 Antibody (C-term)
Purified Rabbit Polyclonal Antibody (Pab)
Catalog # AP12644b

Specification

ANGPTL7 Antibody (C-term) - Product Information

Application	FC, IHC-P, WB,E
Primary Accession	O43827
Other Accession	NP_066969.1
Reactivity	Human
Host	Rabbit
Clonality	Polyclonal
Isotype	Rabbit IgG
Calculated MW	40018
Antigen Region	315-346

ANGPTL7 Antibody (C-term) - Additional Information

Gene ID 10218

Other Names

Angiopoietin-related protein 7, Angiopoietin-like factor, Angiopoietin-like protein 7, Cornea-derived transcript 6 protein, ANGPTL7, CDT6

Target/Specificity

This ANGPTL7 antibody is generated from rabbits immunized with a KLH conjugated synthetic peptide between 315-346 amino acids from the C-terminal region of human ANGPTL7.

Dilution

FC~~1:10~50

IHC-P~~1:10~50

WB~~1:1000

E~~Use at an assay dependent concentration.

Format

Purified polyclonal antibody supplied in PBS with 0.09% (W/V) sodium azide. This antibody is prepared by Saturated Ammonium Sulfate (SAS) precipitation followed by dialysis against PBS.

Storage

Maintain refrigerated at 2-8°C for up to 2 weeks. For long term storage store at -20°C in small aliquots to prevent freeze-thaw cycles.

Precautions

ANGPTL7 Antibody (C-term) is for research use only and not for use in diagnostic or therapeutic procedures.

ANGPTL7 Antibody (C-term) - Protein Information

Name ANGPTL7

Synonyms CDT6

Function Has a role in the formation and organization of the extracellular matrix. In the eye, it functions as a mediator of dexamethasone-induced matrix deposition in the trabecular meshwork, the tissue responsible for the outflow of the ocular aqueous humor and for the maintenance of intraocular pressure (PubMed:[21199193](#)). Is a negative regulator of angiogenesis in the cornea, and plays a major role in maintaining corneal avascularity and transparency (PubMed:[25622036](#)).

Cellular Location

Secreted.

Tissue Location

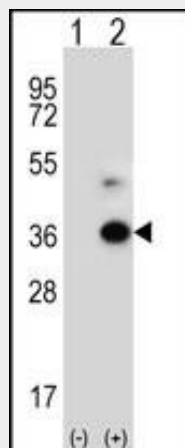
Highly expressed in the cornea (at protein level) (PubMed:11682471). Expression is restricted to the stromal layer (PubMed:11682471). Also detected at the junction between the corneal stromal layer and the conjunctiva. Not detected in the sclera (PubMed:11682471).

ANGPTL7 Antibody (C-term) - Protocols

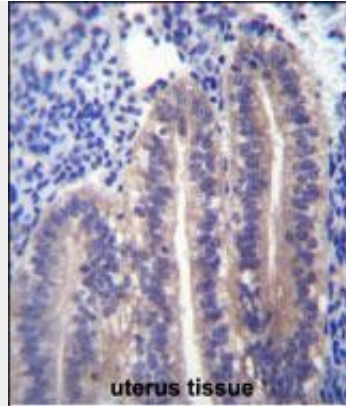
Provided below are standard protocols that you may find useful for product applications.

- [Western Blot](#)
- [Blocking Peptides](#)
- [Dot Blot](#)
- [Immunohistochemistry](#)
- [Immunofluorescence](#)
- [Immunoprecipitation](#)
- [Flow Cytometry](#)
- [Cell Culture](#)

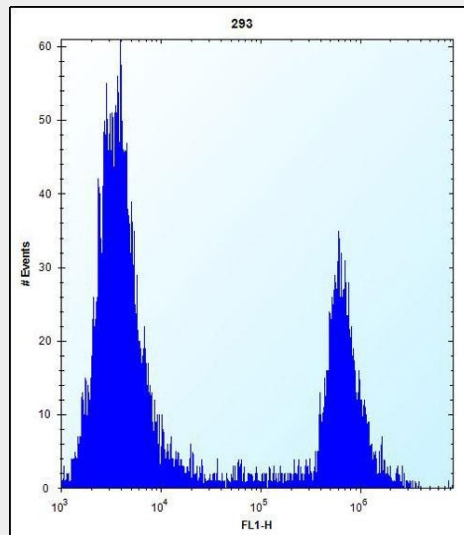
ANGPTL7 Antibody (C-term) - Images



Western blot analysis of ANGPTL7 (arrow) using rabbit polyclonal ANGPTL7 Antibody (C-term) (Cat. #AP12644b). 293 cell lysates (2 ug/lane) either nontransfected (Lane 1) or transiently transfected (Lane 2) with the ANGPTL7 gene.



ANGPTL7 Antibody (C-term) (Cat. #AP12644b) immunohistochemistry analysis in formalin fixed and paraffin embedded human uterus tissue followed by peroxidase conjugation of the secondary antibody and DAB staining. This data demonstrates the use of ANGPTL7 Antibody (C-term) for immunohistochemistry. Clinical relevance has not been evaluated.



ANGPTL7 Antibody (C-term) (Cat. #AP12644b) flow cytometric analysis of 293 cells (right histogram) compared to a negative control cell (left histogram). FITC-conjugated goat-anti-rabbit secondary antibodies were used for the analysis.

ANGPTL7 Antibody (C-term) - Background

The function of this protein remains unknown.

ANGPTL7 Antibody (C-term) - References

- Kuchtey, J., et al. Invest. Ophthalmol. Vis. Sci. 49(8):3438-3448(2008)
- Zhang, Z., et al. Protein Sci. 13(10):2819-2824(2004)
- Clark, H.F., et al. Genome Res. 13(10):2265-2270(2003)
- Peek, R., et al. J. Biol. Chem. 277(1):686-693(2002)
- Stover, C., et al. Genes Immun. 2(3):119-127(2001)