

FGL1 Antibody (C-term)
Affinity Purified Rabbit Polyclonal Antibody (Pab)
Catalog # AP12647b**Specification**

FGL1 Antibody (C-term) - Product Information

Application	WB, IHC-P,E
Primary Accession	Q08830
Other Accession	NP_671736.2 , NP_963847.1
Reactivity	Human
Host	Rabbit
Clonality	Polyclonal
Isotype	Rabbit IgG
Calculated MW	36379
Antigen Region	218-247

FGL1 Antibody (C-term) - Additional Information**Gene ID** 2267**Other Names**

Fibrinogen-like protein 1, HP-041, Hepassocin, Hepatocyte-derived fibrinogen-related protein 1, HFREP-1, Liver fibrinogen-related protein 1, LFIRE-1, FGL1, HFREP1

Target/Specificity

This FGL1 antibody is generated from rabbits immunized with a KLH conjugated synthetic peptide between 218-247 amino acids from the C-terminal region of human FGL1.

Dilution

WB~~1:1000

IHC-P~~1:10~50

E~~Use at an assay dependent concentration.

Format

Purified polyclonal antibody supplied in PBS with 0.09% (W/V) sodium azide. This antibody is purified through a protein A column, followed by peptide affinity purification.

Storage

Maintain refrigerated at 2-8°C for up to 2 weeks. For long term storage store at -20°C in small aliquots to prevent freeze-thaw cycles.

Precautions

FGL1 Antibody (C-term) is for research use only and not for use in diagnostic or therapeutic procedures.

FGL1 Antibody (C-term) - Protein Information

Name FGL1 {ECO:0000303|PubMed:18039467, ECO:0000312|HGNC:HGNC:3695}

Function Immune suppressive molecule that inhibits antigen-specific T- cell activation by acting as a major ligand of LAG3 (PubMed:[30580966](#)). Responsible for LAG3 T-cell inhibitory function (PubMed:[30580966](#)). Binds LAG3 independently from MHC class II (MHC-II) (PubMed:[30580966](#)). Secreted by, and promotes growth of, hepatocytes (PubMed:[11470158](#), PubMed:[19880967](#)).

Cellular Location

Secreted. Note=Secreted in the blood plasma

Tissue Location

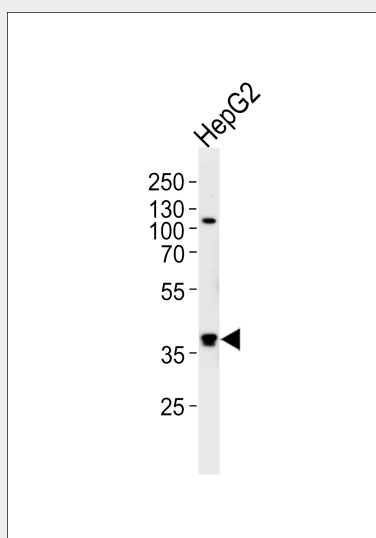
Under normal conditions, liver-specific.

FGL1 Antibody (C-term) - Protocols

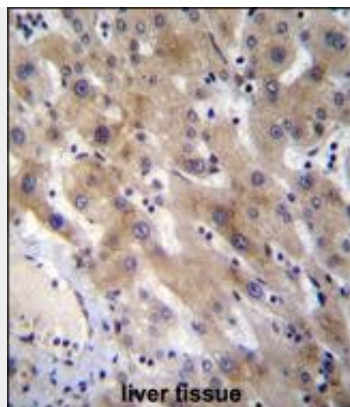
Provided below are standard protocols that you may find useful for product applications.

- [Western Blot](#)
- [Blocking Peptides](#)
- [Dot Blot](#)
- [Immunohistochemistry](#)
- [Immunofluorescence](#)
- [Immunoprecipitation](#)
- [Flow Cytometry](#)
- [Cell Culture](#)

FGL1 Antibody (C-term) - Images



Western blot analysis of lysate from HepG2 cell line, using FGL1 Antibody (C-term)(Cat. #AP12647b). AP12647b was diluted at 1:1000 at each lane. A goat anti-rabbit IgG H&L(HRP) at 1:5000 dilution was used as the secondary antibody. Lysate at 35ug per lane.



FGL1 Antibody (C-term) (Cat. #AP12647b) immunohistochemistry analysis in formalin fixed and paraffin embedded human liver tissue followed by peroxidase conjugation of the secondary antibody and DAB staining. This data demonstrates the use of FGL1 Antibody (C-term) for immunohistochemistry. Clinical relevance has not been evaluated.

FGL1 Antibody (C-term) - Background

Fibrinogen-like 1 is a member of the fibrinogen family. This protein is homologous to the carboxy terminus of the fibrinogen beta- and gamma- subunits which contains the four conserved cysteines of fibrinogens and fibrinogen related proteins. However, this protein lacks the platelet-binding site, cross-linking region and a thrombin-sensitive site which are necessary for fibrin clot formation. This protein may play a role in the development of hepatocellular carcinomas. Four alternatively spliced transcript variants encoding the same protein exist for this gene.

FGL1 Antibody (C-term) - References

Bailey, S.D., et al. Diabetes Care (2010) In press :
Rose, J.E., et al. Mol. Med. 16 (7-8), 247-253 (2010) :
Segat, L., et al. J. Gastroenterol. Hepatol. 24(12):1840-1846(2009)
Talmud, P.J., et al. Am. J. Hum. Genet. 85(5):628-642(2009)
Yu, H.T., et al. J. Biol. Chem. 284(20):13335-13347(2009)