

MED8 Antibody (Center)
Affinity Purified Rabbit Polyclonal Antibody (Pab)
Catalog # AP12649c**Specification**

MED8 Antibody (Center) - Product Information

Application	WB,E
Primary Accession	Q96G25
Other Accession	Q9D7W5 , Q6NYT1 , NP_443109.2 , NP_963836.2
Reactivity	Human
Predicted	Zebrafish, Mouse
Host	Rabbit
Clonality	Polyclonal
Isotype	Rabbit IgG
Calculated MW	29080
Antigen Region	95-122

MED8 Antibody (Center) - Additional Information**Gene ID** 112950**Other Names**

Mediator of RNA polymerase II transcription subunit 8, Activator-recruited cofactor 32 kDa component, ARC32, Mediator complex subunit 8, MED8

Target/Specificity

This MED8 antibody is generated from rabbits immunized with a KLH conjugated synthetic peptide between 95-122 amino acids from the Central region of human MED8.

Dilution

WB~~1:1000

E~~Use at an assay dependent concentration.

Format

Purified polyclonal antibody supplied in PBS with 0.09% (W/V) sodium azide. This antibody is purified through a protein A column, followed by peptide affinity purification.

Storage

Maintain refrigerated at 2-8°C for up to 2 weeks. For long term storage store at -20°C in small aliquots to prevent freeze-thaw cycles.

Precautions

MED8 Antibody (Center) is for research use only and not for use in diagnostic or therapeutic procedures.

MED8 Antibody (Center) - Protein Information**Name** MED8

Function Component of the Mediator complex, a coactivator involved in the regulated transcription of nearly all RNA polymerase II-dependent genes. Mediator functions as a bridge to convey information from gene-specific regulatory proteins to the basal RNA polymerase II transcription machinery. Mediator is recruited to promoters by direct interactions with regulatory proteins and serves as a scaffold for the assembly of a functional preinitiation complex with RNA polymerase II and the general transcription factors. May play a role as a target recruitment subunit in E3 ubiquitin-protein ligase complexes and thus in ubiquitination and subsequent proteasomal degradation of target proteins.

Cellular Location

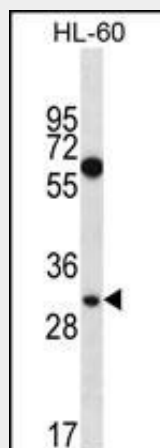
Nucleus.

MED8 Antibody (Center) - Protocols

Provided below are standard protocols that you may find useful for product applications.

- [Western Blot](#)
- [Blocking Peptides](#)
- [Dot Blot](#)
- [Immunohistochemistry](#)
- [Immunofluorescence](#)
- [Immunoprecipitation](#)
- [Flow Cytometry](#)
- [Cell Culture](#)

MED8 Antibody (Center) - Images



MED8 Antibody (Center) (Cat. #AP12649c) western blot analysis in HL-60 cell line lysates (35ug/lane). This demonstrates the MED8 antibody detected the MED8 protein (arrow).

MED8 Antibody (Center) - Background

This gene encodes a protein that is one of more than 20 subunits of the mediator complex, first identified in *S. cerevisiae*, that is required for activation of transcription. The product of this gene also interacts with elongins B and C, and CUL2 and RBX1, to reconstitute a ubiquitin ligase. Two alternative transcripts encoding different isoforms have been described.

MED8 Antibody (Center) - References

Leonard, V.H., et al. J. Virol. 80(19):9667-9675(2006)
Wang, A.G., et al. Biochem. Biophys. Res. Commun. 345(3):1022-1032(2006)
Sato, S., et al. Mol. Cell 14(5):685-691(2004)
Tomomori-Sato, C., et al. J. Biol. Chem. 279(7):5846-5851(2004)
Sato, S., et al. J. Biol. Chem. 278(50):49671-49674(2003)