

STX8 Antibody (N-term)
Affinity Purified Rabbit Polyclonal Antibody (Pab)
Catalog # AP12651c

Specification

STX8 Antibody (N-term) - Product Information

Application	WB,E
Primary Accession	O9UNK0
Other Accession	NP_004844.1
Reactivity	Mouse
Host	Rabbit
Clonality	Polyclonal
Isotype	Rabbit IgG
Calculated MW	26907
Antigen Region	8-36

STX8 Antibody (N-term) - Additional Information

Gene ID 9482

Other Names

Syntaxin-8, STX8

Target/Specificity

This STX8 antibody is generated from rabbits immunized with a KLH conjugated synthetic peptide between 8-36 amino acids from the N-terminal region of human STX8.

Dilution

WB~~1:1000

Format

Purified polyclonal antibody supplied in PBS with 0.09% (W/V) sodium azide. This antibody is purified through a protein A column, followed by peptide affinity purification.

Storage

Maintain refrigerated at 2-8°C for up to 2 weeks. For long term storage store at -20°C in small aliquots to prevent freeze-thaw cycles.

Precautions

STX8 Antibody (N-term) is for research use only and not for use in diagnostic or therapeutic procedures.

STX8 Antibody (N-term) - Protein Information

Name STX8

Function Vesicle trafficking protein that functions in the early secretory pathway, possibly by mediating retrograde transport from cis- Golgi membranes to the ER.

Cellular Location

Membrane; Single-pass type IV membrane protein. Note=Preferentially associated with the early endosome. To a lesser extent, also present in late endosome, the plasma membrane and coated pits (By similarity).

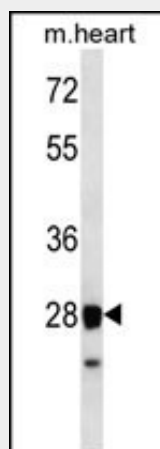
Tissue Location

Highly expressed in heart. Also found in brain, kidney, liver, lung, placenta, skeletal muscle, spleen and pancreas

STX8 Antibody (N-term) - Protocols

Provided below are standard protocols that you may find useful for product applications.

- [Western Blot](#)
- [Blocking Peptides](#)
- [Dot Blot](#)
- [Immunohistochemistry](#)
- [Immunofluorescence](#)
- [Immunoprecipitation](#)
- [Flow Cytometry](#)
- [Cell Culture](#)

STX8 Antibody (N-term) - Images

STX8 Antibody (N-term) (Cat. #AP12651c) western blot analysis in mouse heart tissue lysates (35ug/lane). This demonstrates the STX8 antibody detected the STX8 protein (arrow).

STX8 Antibody (N-term) - Background

The gene is a member of the syntaxin family. The encoded protein is involved in protein trafficking from early to late endosomes via vesicle fusion and exocytosis. A related pseudogene has been identified on chromosome 12. Alternative splicing results in multiple transcript variants.

STX8 Antibody (N-term) - References

Sebastiani, P., et al. Science (2010) In press :
Rose, J.E., et al. Mol. Med. 16 (7-8), 247-253 (2010) :
Henckaerts, L., et al. Clin. Gastroenterol. Hepatol. 7(9):972-980(2009)

Weersma, R.K., et al. Am. J. Gastroenterol. 104(3):630-638(2009)
He, Y., et al. J. Lipid Res. 50(3):398-404(2009)