

APBA2 Antibody (Center)
Affinity Purified Rabbit Polyclonal Antibody (Pab)
Catalog # AP12659c

Specification

APBA2 Antibody (Center) - Product Information

Application	WB,E
Primary Accession	O99767
Other Accession	O35431 , P98084 , NP_005494.2 , NP_001123886.1
Reactivity	Mouse
Predicted	Rat
Host	Rabbit
Clonality	Polyclonal
Isotype	Rabbit IgG
Calculated MW	82512
Antigen Region	307-336

APBA2 Antibody (Center) - Additional Information

Gene ID 321

Other Names

Amyloid beta A4 precursor protein-binding family A member 2, Adapter protein X11beta, Neuron-specific X11L protein, Neuronal Munc18-1-interacting protein 2, Mint-2, APBA2, MINT2, X11L

Target/Specificity

This APBA2 antibody is generated from rabbits immunized with a KLH conjugated synthetic peptide between 307-336 amino acids from the Central region of human APBA2.

Dilution

WB~~1:1000
E~~Use at an assay dependent concentration.

Format

Purified polyclonal antibody supplied in PBS with 0.09% (W/V) sodium azide. This antibody is purified through a protein A column, followed by peptide affinity purification.

Storage

Maintain refrigerated at 2-8°C for up to 2 weeks. For long term storage store at -20°C in small aliquots to prevent freeze-thaw cycles.

Precautions

APBA2 Antibody (Center) is for research use only and not for use in diagnostic or therapeutic procedures.

APBA2 Antibody (Center) - Protein Information

Name APBA2

Synonyms MINT2, X11L

Function Putative function in synaptic vesicle exocytosis by binding to STXBP1, an essential component of the synaptic vesicle exocytotic machinery. May modulate processing of the amyloid-beta precursor protein (APP) and hence formation of APP-beta.

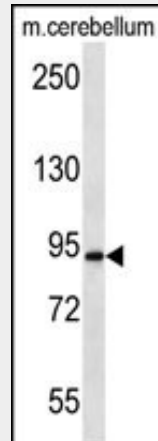
Tissue Location
Brain.

APBA2 Antibody (Center) - Protocols

Provided below are standard protocols that you may find useful for product applications.

- [Western Blot](#)
- [Blocking Peptides](#)
- [Dot Blot](#)
- [Immunohistochemistry](#)
- [Immunofluorescence](#)
- [Immunoprecipitation](#)
- [Flow Cytometry](#)
- [Cell Culture](#)

APBA2 Antibody (Center) - Images



APBA2 Antibody (Center) (Cat. #AP12659c) western blot analysis in mouse cerebellum tissue lysates (35ug/lane). This demonstrates the APBA2 antibody detected the APBA2 protein (arrow).

APBA2 Antibody (Center) - Background

The protein encoded by this gene is a member of the X11 protein family. It is a neuronal adapter protein that interacts with the Alzheimer's disease amyloid precursor protein (APP). It stabilizes APP and inhibits production of proteolytic APP fragments including the A beta peptide that is deposited in the brains of Alzheimer's disease patients. This gene product is believed to be involved in signal transduction processes. It is also regarded as a putative vesicular trafficking protein in the brain that can form a complex with the potential to couple synaptic vesicle exocytosis to

neuronal cell adhesion. Multiple transcript variants encoding different isoforms have been found for this gene. [provided by RefSeq].

APBA2 Antibody (Center) - References

Rose, J.E., et al. Mol. Med. 16 (7-8), 247-253 (2010) :
Swistowski, A., et al. J. Neurosci. 29(50):15703-15712(2009)
Mitchell, J.C., et al. Hum. Mol. Genet. 18(23):4492-4500(2009)
Babatz, T.D., et al. Autism Res 2(6):359-364(2009)
Chang, S.J., et al. BMC Genomics 10, 613 (2009) :