

**EBNA1BP2 Antibody (C-term)**  
**Affinity Purified Rabbit Polyclonal Antibody (Pab)**  
**Catalog # AP12662b****Specification**

---

**EBNA1BP2 Antibody (C-term) - Product Information**

Application	WB,E
Primary Accession	<a href="#">Q99848</a>
Other Accession	<a href="#">NP_001153408.1</a> , <a href="#">NP_006815.2</a>
Reactivity	Human
Host	Rabbit
Clonality	Polyclonal
Isotype	Rabbit IgG
Calculated MW	34852
Antigen Region	271-302

**EBNA1BP2 Antibody (C-term) - Additional Information****Gene ID** 10969**Other Names**

Probable rRNA-processing protein EBP2, EBNA1-binding protein 2, Nucleolar protein p40, EBNA1BP2, EBP2

**Target/Specificity**

This EBNA1BP2 antibody is generated from rabbits immunized with a KLH conjugated synthetic peptide between 271-302 amino acids from the C-terminal region of human EBNA1BP2.

**Dilution**

WB~~1:1000

E~~Use at an assay dependent concentration.

**Format**

Purified polyclonal antibody supplied in PBS with 0.09% (W/V) sodium azide. This antibody is purified through a protein A column, followed by peptide affinity purification.

**Storage**

Maintain refrigerated at 2-8°C for up to 2 weeks. For long term storage store at -20°C in small aliquots to prevent freeze-thaw cycles.

**Precautions**

EBNA1BP2 Antibody (C-term) is for research use only and not for use in diagnostic or therapeutic procedures.

**EBNA1BP2 Antibody (C-term) - Protein Information****Name** EBNA1BP2

**Synonyms** EBP2**Function** Required for the processing of the 27S pre-rRNA.**Cellular Location**

Nucleus, nucleolus. Note=Associated with the nucleolus in an RNA-dependent manner

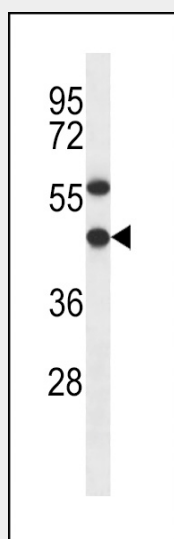
**Tissue Location**

Ubiquitous..

**EBNA1BP2 Antibody (C-term) - Protocols**

Provided below are standard protocols that you may find useful for product applications.

- [Western Blot](#)
- [Blocking Peptides](#)
- [Dot Blot](#)
- [Immunohistochemistry](#)
- [Immunofluorescence](#)
- [Immunoprecipitation](#)
- [Flow Cytometry](#)
- [Cell Culture](#)

**EBNA1BP2 Antibody (C-term) - Images**

EBNA1BP2 Antibody (C-term) (Cat. #AP12662b) western blot analysis in NCI-H292 cell line lysates (35ug/lane). This demonstrates the EBNA1BP2 antibody detected the EBNA1BP2 protein (arrow).

**EBNA1BP2 Antibody (C-term) - Background**

EBNA1BP2 is required for the processing of the 27S pre-rRNA (By similarity).