

**CA6 Antibody (C-term)**  
**Affinity Purified Rabbit Polyclonal Antibody (Pab)**  
**Catalog # AP12663b****Specification**

---

**CA6 Antibody (C-term) - Product Information**

Application	IHC-P, WB,E
Primary Accession	<a href="#">P23280</a>
Other Accession	<a href="#">NP_001206.2</a>
Reactivity	Human
Host	Rabbit
Clonality	Polyclonal
Isotype	Rabbit IgG
Calculated MW	35367
Antigen Region	238-267

**CA6 Antibody (C-term) - Additional Information****Gene ID** 765**Other Names**

Carbonic anhydrase 6, Carbonate dehydratase VI, Carbonic anhydrase VI, CA-VI, Salivary carbonic anhydrase, Secreted carbonic anhydrase, CA6

**Target/Specificity**

This CA6 antibody is generated from rabbits immunized with a KLH conjugated synthetic peptide between 238-267 amino acids from the C-terminal region of human CA6.

**Dilution**

IHC-P~~1:10~50

WB~~1:1000

E~~Use at an assay dependent concentration.

**Format**

Purified polyclonal antibody supplied in PBS with 0.09% (W/V) sodium azide. This antibody is purified through a protein A column, followed by peptide affinity purification.

**Storage**

Maintain refrigerated at 2-8°C for up to 2 weeks. For long term storage store at -20°C in small aliquots to prevent freeze-thaw cycles.

**Precautions**

CA6 Antibody (C-term) is for research use only and not for use in diagnostic or therapeutic procedures.

**CA6 Antibody (C-term) - Protein Information****Name** CA6

**Function** Reversible hydration of carbon dioxide. Its role in saliva is unknown.

**Cellular Location**

Secreted.

**Tissue Location**

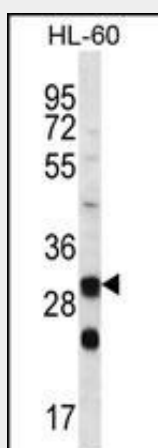
Major constituent of saliva.

**CA6 Antibody (C-term) - Protocols**

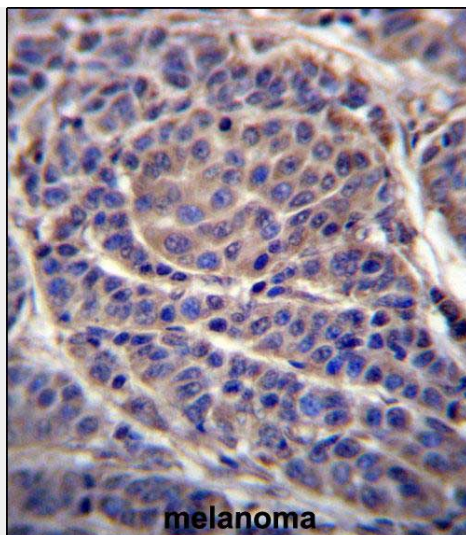
Provided below are standard protocols that you may find useful for product applications.

- [Western Blot](#)
- [Blocking Peptides](#)
- [Dot Blot](#)
- [Immunohistochemistry](#)
- [Immunofluorescence](#)
- [Immunoprecipitation](#)
- [Flow Cytometry](#)
- [Cell Culture](#)

**CA6 Antibody (C-term) - Images**



CA6 Antibody (C-term) (Cat. #AP12663b) western blot analysis in HL-60 cell line lysates (35ug/lane). This demonstrates the CA6 antibody detected the CA6 protein (arrow).



CA6 Antibody (C-term) (Cat. #AP12663b) immunohistochemistry analysis in formalin fixed and paraffin embedded human melanoma followed by peroxidase conjugation of the secondary antibody and DAB staining. This data demonstrates the use of CA6 Antibody (C-term) for immunohistochemistry. Clinical relevance has not been evaluated.

#### **CA6 Antibody (C-term) - Background**

The protein encoded by this gene is one of several isozymes of carbonic anhydrase. This protein is found only in salivary glands and saliva and protein may play a role in the reversible hydration of carbon dioxide though its function in saliva is unknown.

#### **CA6 Antibody (C-term) - References**

Padiglia, A., et al. Am. J. Clin. Nutr. 92(3):539-545(2010)  
Rose, J.E., et al. Mol. Med. 16 (7-8), 247-253 (2010) :  
Peres, R.C., et al. Pharmacogenomics J. 10(2):114-119(2010)  
Nishimori, I., et al. Bioorg. Med. Chem. 15(15):5351-5357(2007)  
Breton, S. JOP 2 (4 SUPPL), 159-164 (2001) :