

MED22 Antibody (N-term)
Affinity Purified Rabbit Polyclonal Antibody (Pab)
Catalog # AP12666a**Specification**

MED22 Antibody (N-term) - Product Information

Application	WB,E
Primary Accession	Q15528
Other Accession	Q6GQ95 , A0JPN6 , Q62276 , NP_598395.1 , NP_852468.1
Reactivity	Human
Predicted	Mouse, Rat, Xenopus
Host	Rabbit
Clonality	Polyclonal
Isotype	Rabbit IgG
Calculated MW	22221
Antigen Region	1-30

MED22 Antibody (N-term) - Additional Information**Gene ID** 6837**Other Names**

Mediator of RNA polymerase II transcription subunit 22, Mediator complex subunit 22, Surfeit locus protein 5, Surf-5, MED22, SURF5

Target/Specificity

This MED22 antibody is generated from rabbits immunized with a KLH conjugated synthetic peptide between 1-30 amino acids from the N-terminal region of human MED22.

Dilution

WB~~1:1000

E~~Use at an assay dependent concentration.

Format

Purified polyclonal antibody supplied in PBS with 0.09% (W/V) sodium azide. This antibody is purified through a protein A column, followed by peptide affinity purification.

Storage

Maintain refrigerated at 2-8°C for up to 2 weeks. For long term storage store at -20°C in small aliquots to prevent freeze-thaw cycles.

Precautions

MED22 Antibody (N-term) is for research use only and not for use in diagnostic or therapeutic procedures.

MED22 Antibody (N-term) - Protein Information

Name MED22

Synonyms SURF5

Function Component of the Mediator complex, a coactivator involved in the regulated transcription of nearly all RNA polymerase II-dependent genes. Mediator functions as a bridge to convey information from gene-specific regulatory proteins to the basal RNA polymerase II transcription machinery. Mediator is recruited to promoters by direct interactions with regulatory proteins and serves as a scaffold for the assembly of a functional preinitiation complex with RNA polymerase II and the general transcription factors.

Cellular Location

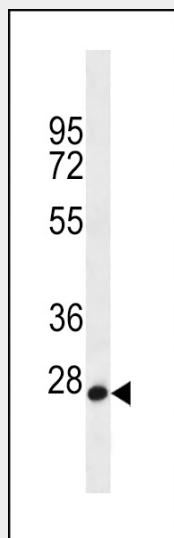
Nucleus.

MED22 Antibody (N-term) - Protocols

Provided below are standard protocols that you may find useful for product applications.

- [Western Blot](#)
- [Blocking Peptides](#)
- [Dot Blot](#)
- [Immunohistochemistry](#)
- [Immunofluorescence](#)
- [Immunoprecipitation](#)
- [Flow Cytometry](#)
- [Cell Culture](#)

MED22 Antibody (N-term) - Images



MED22 Antibody (N-term) (Cat. #AP12666a) western blot analysis in HL-60 cell line lysates (35ug/lane). This demonstrates the MED22 antibody detected the MED22 protein (arrow).

MED22 Antibody (N-term) - Background

This gene is located in the surfait gene cluster, a group of very tightly linked housekeeping genes that do not share sequence similarity. The gene is oriented in a head-to-head fashion

with RPL7A (SURF3) and the two genes share a bidirectional promoter. The encoded proteins are localized to the cytoplasm. Two alternative transcript variants encoding different isoforms have been identified for this gene.

MED22 Antibody (N-term) - References

Bailey, S.D., et al. Diabetes Care 33(10):2250-2253(2010)
Talmud, P.J., et al. Am. J. Hum. Genet. 85(5):628-642(2009)
Lamesch, P., et al. Genomics 89(3):307-315(2007)
Sato, S., et al. Mol. Cell 14(5):685-691(2004)
Hillman, R.T., et al. Genome Biol. 5 (2), R8 (2004) :