

TNMD Antibody (Center)
Affinity Purified Rabbit Polyclonal Antibody (Pab)
Catalog # AP12668c**Specification**

TNMD Antibody (Center) - Product Information

Application	WB,E
Primary Accession	O9H2S6
Other Accession	NP_071427.2
Reactivity	Human, Mouse
Host	Rabbit
Clonality	Polyclonal
Isotype	Rabbit IgG
Antigen Region	213-241

TNMD Antibody (Center) - Additional Information**Gene ID** 64102**Other Names**

Tenomodulin, TeM, hTeM, Chondromodulin-1-like protein, ChM1L, hChM1L, Chondromodulin-I-like protein, Myodulin, Tendin, TNMD, CHM1L

Target/Specificity

This TNMD antibody is generated from rabbits immunized with a KLH conjugated synthetic peptide between 213-241 amino acids from the Central region of human TNMD.

Dilution

WB~~1:1000

E~~Use at an assay dependent concentration.

Format

Purified polyclonal antibody supplied in PBS with 0.09% (W/V) sodium azide. This antibody is purified through a protein A column, followed by peptide affinity purification.

Storage

Maintain refrigerated at 2-8°C for up to 2 weeks. For long term storage store at -20°C in small aliquots to prevent freeze-thaw cycles.

Precautions

TNMD Antibody (Center) is for research use only and not for use in diagnostic or therapeutic procedures.

TNMD Antibody (Center) - Protein Information**Name** TNMD**Synonyms** CHM1L

Function May be an angiogenesis inhibitor.

Cellular Location

[Isoform 1]: Membrane; Single-pass type II membrane protein. Nucleus envelope [Isoform 3]: Cytoplasm.

Tissue Location

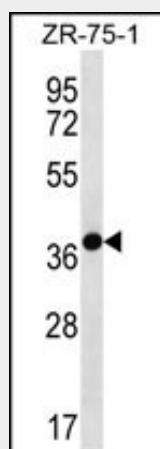
Highly expressed in hypovascular connective tissues such as tendons. Also has strong expression in adipose tissue

TNMD Antibody (Center) - Protocols

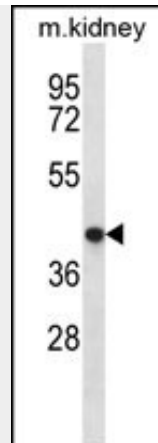
Provided below are standard protocols that you may find useful for product applications.

- [Western Blot](#)
- [Blocking Peptides](#)
- [Dot Blot](#)
- [Immunohistochemistry](#)
- [Immunofluorescence](#)
- [Immunoprecipitation](#)
- [Flow Cytometry](#)
- [Cell Culture](#)

TNMD Antibody (Center) - Images



TNMD Antibody (Center) (Cat. #AP12668c) western blot analysis in ZR-75-1 cell line lysates (35ug/lane). This demonstrates the TNMD antibody detected the TNMD protein (arrow).



TNMD Antibody (Center) (Cat. #AP12668c) western blot analysis in mouse kidney tissue lysates (35ug/lane). This demonstrates the TNMD antibody detected the TNMD protein (arrow).

TNMD Antibody (Center) - Background

This gene encodes a protein that is related to chondromodulin-I, which is a cartilage-specific glycoprotein that functions to stimulate chondrocyte growth and to inhibit tube formation of endothelial cells. This protein is also an angiogenesis inhibitor. Genetic variation in this gene is associated with a risk for type 2 diabetes, central obesity and serum levels of systemic immune mediators in a body size-dependent manner. This gene is also a candidate gene for age-related macular degeneration, though a direct link has yet to be demonstrated.

TNMD Antibody (Center) - References

Saiki, A., et al. J. Clin. Endocrinol. Metab. 94(10):3987-3994(2009)
Tolppanen, A.M., et al. Neurobiol. Aging (2009) In press :
Tolppanen, A.M., et al. Mol. Vis. 15, 762-770 (2009) :
Tolppanen, A.M., et al. Int J Obes (Lond) 32(12):1868-1872(2008)
Kimura, N., et al. Circulation 118(17):1737-1747(2008)

TNMD Antibody (Center) - Citations

- [Induction of predominant tenogenic phenotype in human dermal fibroblasts via synergistic effect of TGF- \$\beta\$ and elongated cell shape.](#)