

EFCAB4A Antibody (N-term)
Affinity Purified Rabbit Polyclonal Antibody (Pab)
Catalog # AP12675a

Specification

EFCAB4A Antibody (N-term) - Product Information

Application	WB, IHC-P,E
Primary Accession	Q8N4Y2
Other Accession	NP_775855.3
Reactivity	Human
Host	Rabbit
Clonality	Polyclonal
Isotype	Rabbit IgG
Calculated MW	44956
Antigen Region	27-56

EFCAB4A Antibody (N-term) - Additional Information

Gene ID 283229

Other Names

EF-hand calcium-binding domain-containing protein 4A, Calcium release-activated calcium channel regulator 2B, CRAC channel regulator 2B, Calcium release-activated channel regulator 2B, CRACR2B, EFCAB4A

Target/Specificity

This EFCAB4A antibody is generated from rabbits immunized with a KLH conjugated synthetic peptide between 27-56 amino acids from the N-terminal region of human EFCAB4A.

Dilution

WB~~1:1000
IHC-P~~1:10~50

Format

Purified polyclonal antibody supplied in PBS with 0.09% (W/V) sodium azide. This antibody is purified through a protein A column, followed by peptide affinity purification.

Storage

Maintain refrigerated at 2-8°C for up to 2 weeks. For long term storage store at -20°C in small aliquots to prevent freeze-thaw cycles.

Precautions

EFCAB4A Antibody (N-term) is for research use only and not for use in diagnostic or therapeutic procedures.

EFCAB4A Antibody (N-term) - Protein Information

Name CRACR2B

Synonyms EFCAB4A

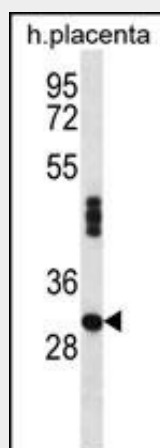
Function Plays a role in store-operated Ca^{2+} entry (SOCE).

EFCAB4A Antibody (N-term) - Protocols

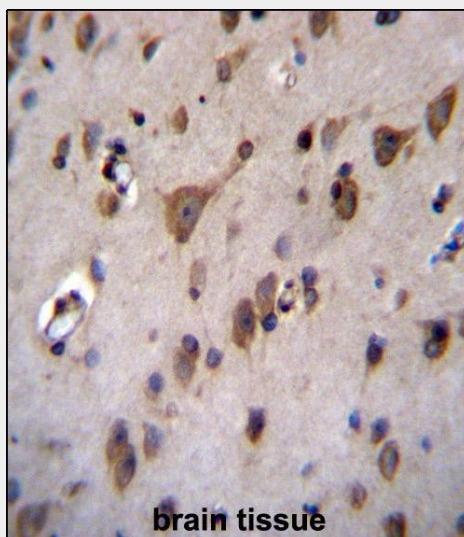
Provided below are standard protocols that you may find useful for product applications.

- [Western Blot](#)
- [Blocking Peptides](#)
- [Dot Blot](#)
- [Immunohistochemistry](#)
- [Immunofluorescence](#)
- [Immunoprecipitation](#)
- [Flow Cytometry](#)
- [Cell Culture](#)

EFCAB4A Antibody (N-term) - Images



EFCAB4A Antibody (N-term) (Cat. #AP12675a) western blot analysis in human placenta tissue lysates (35ug/lane). This demonstrates the EFCAB4A antibody detected the EFCAB4A protein (arrow).



EFCAB4A Antibody (N-term) (Cat. #AP12675a) immunohistochemistry analysis in formalin fixed and paraffin embedded human brain tissue followed by peroxidase conjugation of the secondary antibody and DAB staining. This data demonstrates the use of EFCAB4A Antibody (N-term) for immunohistochemistry. Clinical relevance has not been evaluated.

EFCAB4A Antibody (N-term) - Background

EFCAB4A plays a role in store-operated Ca^{2+} entry (SOCE).

EFCAB4A Antibody (N-term) - References

Srikanth, S., et al. Nat. Cell Biol. 12(5):436-446(2010)

Lamesch, P., et al. Genomics 89(3):307-315(2007)