

**CNRP1 Antibody (Center)**  
**Affinity Purified Rabbit Polyclonal Antibody (Pab)**  
**Catalog # AP12679c****Specification**

---

**CNRP1 Antibody (Center) - Product Information**

|                   |   |
|-------------------|---|
| Application       | WB, IHC-P,E   |
| Primary Accession | <a href="#">O96F85</a>  |
| Other Accession   | <a href="#">O9GKT6</a> , <a href="#">NP_056278.1</a> , <a href="#">NP_001104571.1</a> |
| Reactivity        | Human   |
| Predicted         | Monkey  |
| Host              | Rabbit  |
| Clonality         | Polyclonal  |
| Isotype           | Rabbit IgG  |
| Calculated MW     | 18648   |
| Antigen Region    | 76-104  |

**CNRP1 Antibody (Center) - Additional Information****Gene ID** 25927**Other Names**

CB1 cannabinoid receptor-interacting protein 1, CRIP-1, CNRIP1, C2orf32

**Target/Specificity**

This CNRP1 antibody is generated from rabbits immunized with a KLH conjugated synthetic peptide between 76-104 amino acids from the Central region of human CNRP1.

**Dilution**

WB~~1:1000

IHC-P~~1:10~50

E~~Use at an assay dependent concentration.

**Format**

Purified polyclonal antibody supplied in PBS with 0.09% (W/V) sodium azide. This antibody is purified through a protein A column, followed by peptide affinity purification.

**Storage**

Maintain refrigerated at 2-8°C for up to 2 weeks. For long term storage store at -20°C in small aliquots to prevent freeze-thaw cycles.

**Precautions**

CNRP1 Antibody (Center) is for research use only and not for use in diagnostic or therapeutic procedures.

**CNRP1 Antibody (Center) - Protein Information****Name** CNRIP1

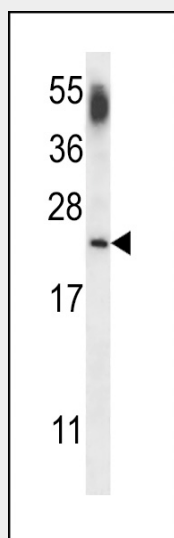
**Synonyms** C2orf32

**Function** [Isoform 1]: Suppresses cannabinoid receptor CNR1-mediated tonic inhibition of voltage-gated calcium channels.

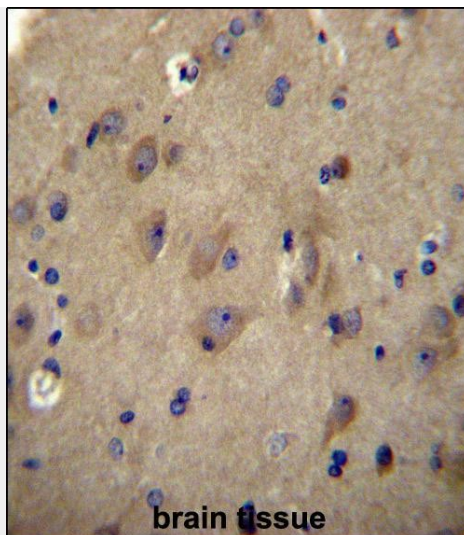
**CNRP1 Antibody (Center) - Protocols**

Provided below are standard protocols that you may find useful for product applications.

- [Western Blot](#)
- [Blocking Peptides](#)
- [Dot Blot](#)
- [Immunohistochemistry](#)
- [Immunofluorescence](#)
- [Immunoprecipitation](#)
- [Flow Cytometry](#)
- [Cell Culture](#)

**CNRP1 Antibody (Center) - Images**

Western blot analysis of lysate from human brain tissue lysate, using CNRP1 Antibody (Center)(Cat. #AP12679c). AP12679c was diluted at 1:1000 at each lane. A goat anti-rabbit IgG H&L(HRP) at 1:5000 dilution was used as the secondary antibody. Lysate at 35ug per lane.



CNRP1 Antibody (Center) (Cat. #AP12679c) immunohistochemistry analysis in formalin fixed and paraffin embedded human brain tissue followed by peroxidase conjugation of the secondary antibody and DAB staining. This data demonstrates the use of CNRP1 Antibody (Center) for immunohistochemistry. Clinical relevance has not been evaluated.

#### **CNRP1 Antibody (Center) - Background**

This gene encodes a G-protein coupled receptor which interacts with the C-terminal tail of cannabinoid receptor 1. This receptor plays a role in synaptic plasticity, analgesia, appetite, and neuroprotection. Two transcript variants encoding different isoforms have been described for this gene.

#### **CNRP1 Antibody (Center) - References**

Rose, J. Phd, et al. Mol. Med. (2010) In press :  
Gieger, C., et al. PLoS Genet. 4 (11), E1000282 (2008) :  
Niehaus, J.L., et al. Mol. Pharmacol. 72(6):1557-1566(2007)  
Swick, L., et al. J. Neurochem. 97(5):1447-1455(2006)