

GRXCR1 Antibody (Center)
Affinity Purified Rabbit Polyclonal Antibody (Pab)
Catalog # AP12687c**Specification**

GRXCR1 Antibody (Center) - Product Information

Application	WB,E
Primary Accession	A8MXD5
Other Accession	Q50H32 , NP_001073945.1
Reactivity	Mouse
Host	Rabbit
Clonality	Polyclonal
Isotype	Rabbit IgG
Calculated MW	32294
Antigen Region	83-112

GRXCR1 Antibody (Center) - Additional Information**Gene ID** 389207**Other Names**

Glutaredoxin domain-containing cysteine-rich protein 1, GRXCR1, DFNB25

Target/Specificity

This GRXCR1 antibody is generated from rabbits immunized with a KLH conjugated synthetic peptide between 83-112 amino acids from the Central region of human GRXCR1.

Dilution

WB~~1:1000

Format

Purified polyclonal antibody supplied in PBS with 0.09% (W/V) sodium azide. This antibody is purified through a protein A column, followed by peptide affinity purification.

Storage

Maintain refrigerated at 2-8°C for up to 2 weeks. For long term storage store at -20°C in small aliquots to prevent freeze-thaw cycles.

Precautions

GRXCR1 Antibody (Center) is for research use only and not for use in diagnostic or therapeutic procedures.

GRXCR1 Antibody (Center) - Protein Information**Name** GRXCR1**Synonyms** DFNB25

Function May play a role in actin filament architecture in developing stereocilia of sensory cells.

Cellular Location

Cell projection, stereocilium. Cell projection, microvillus. Cell projection, kinocilium. Note=In the inner ear, localized to stereocilia, apical microvilli of sensory cells and kinocilia.

Tissue Location

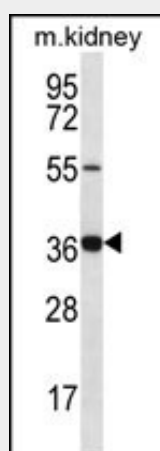
Expressed at low levels in adult lung, brain and duodenum with moderate levels in testis. Highly expressed in fetal cochlea.

GRXCR1 Antibody (Center) - Protocols

Provided below are standard protocols that you may find useful for product applications.

- [Western Blot](#)
- [Blocking Peptides](#)
- [Dot Blot](#)
- [Immunohistochemistry](#)
- [Immunofluorescence](#)
- [Immunoprecipitation](#)
- [Flow Cytometry](#)
- [Cell Culture](#)

GRXCR1 Antibody (Center) - Images



GRXCR1 Antibody (Center) (Cat. #AP12687c) western blot analysis in mouse kidney tissue lysates (35ug/lane). This demonstrates the GRXCR1 antibody detected the GRXCR1 protein (arrow).

GRXCR1 Antibody (Center) - Background

This gene is one of 60 loci associated with autosomal-recessive nonsyndromic hearing impairment. This gene encodes a protein which contains GRX-like domains; these domains play a role in the S-glutathionylation of proteins and may be involved in actin organization in hair cells.

GRXCR1 Antibody (Center) - References

Schraders, M., et al. Am. J. Hum. Genet. 86(2):138-147(2010)
Hillier, L.W., et al. Nature 434(7034):724-731(2005)

Harrington, J.J., et al. Nat. Biotechnol. 19(5):440-445(2001)