

SLC38A8 Antibody (Center)
Affinity Purified Rabbit Polyclonal Antibody (Pab)
Catalog # AP12688c**Specification**

SLC38A8 Antibody (Center) - Product Information

Application	WB,E
Primary Accession	A6NNN8
Other Accession	NP_001073911.1
Reactivity	Human
Host	Rabbit
Clonality	Polyclonal
Isotype	Rabbit IgG
Calculated MW	46731
Antigen Region	149-177

SLC38A8 Antibody (Center) - Additional Information**Gene ID** 146167**Other Names**

Putative sodium-coupled neutral amino acid transporter 8, Solute carrier family 38 member 8, SLC38A8

Target/Specificity

This SLC38A8 antibody is generated from rabbits immunized with a KLH conjugated synthetic peptide between 149-177 amino acids from the Central region of human SLC38A8.

Dilution

WB~~1:1000

E~~Use at an assay dependent concentration.

Format

Purified polyclonal antibody supplied in PBS with 0.09% (W/V) sodium azide. This antibody is purified through a protein A column, followed by peptide affinity purification.

Storage

Maintain refrigerated at 2-8°C for up to 2 weeks. For long term storage store at -20°C in small aliquots to prevent freeze-thaw cycles.

Precautions

SLC38A8 Antibody (Center) is for research use only and not for use in diagnostic or therapeutic procedures.

SLC38A8 Antibody (Center) - Protein Information**Name** SLC38A8 {ECO:0000250|UniProtKB:Q5HZH7, ECO:0000312|HGNC:HGNC:32434}

Function Electrogenic sodium-dependent amino acid transporter with a preference for L-glutamine, L-alanine, L-histidine, L-aspartate and L- arginine. May facilitate glutamine uptake in both excitatory and inhibitory neurons. The transport mechanism and stoichiometry remain to be elucidated.

Cellular Location

Membrane {ECO:0000250|UniProtKB:Q5HZH7}; Multi- pass membrane protein. Cytoplasm, cell cortex {ECO:0000250|UniProtKB:Q5HZH7}. Cell projection, axon {ECO:0000250|UniProtKB:Q5HZH7}

Tissue Location

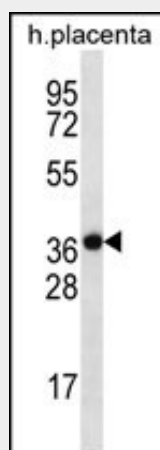
Expressed in fetal and adult brain, and spinal cord. In the brain, it is localized in the cell body and axon of the majority of neuronal cells and in a subset of glial cells. Found throughout the neuronal retina, with higher expression levels in the inner and outer plexiform layers and the photoreceptor layer. Very weak expression is also present in the kidneys, thymus, and testes

SLC38A8 Antibody (Center) - Protocols

Provided below are standard protocols that you may find useful for product applications.

- [Western Blot](#)
- [Blocking Peptides](#)
- [Dot Blot](#)
- [Immunohistochemistry](#)
- [Immunofluorescence](#)
- [Immunoprecipitation](#)
- [Flow Cytometry](#)
- [Cell Culture](#)

SLC38A8 Antibody (Center) - Images



SLC38A8 Antibody (Center) (Cat. #AP12688c) western blot analysis in human placenta tissue lysates (35ug/lane). This demonstrates the SLC38A8 antibody detected the SLC38A8 protein (arrow).

SLC38A8 Antibody (Center) - Background

SLC38A8 is a putative sodium-dependent amino acid/proton antiporter (By similarity).

SLC38A8 Antibody (Center) - References

Rose, J. Phd, et al. Mol. Med. (2010) In press :
Venter, J.C., et al. Science 291(5507):1304-1351(2001)