

TM4SF1 Antibody (N-term)
Affinity Purified Rabbit Polyclonal Antibody (Pab)
Catalog # AP12712a**Specification**

TM4SF1 Antibody (N-term) - Product Information

Application	WB, IHC-P,E
Primary Accession	P30408
Other Accession	NP_055035.1
Reactivity	Human, Mouse
Host	Rabbit
Clonality	Polyclonal
Isotype	Rabbit IgG
Antigen Region	16-45

TM4SF1 Antibody (N-term) - Additional Information**Gene ID** 4071**Other Names**

Transmembrane 4 L6 family member 1, Membrane component chromosome 3 surface marker 1, Tumor-associated antigen L6, TM4SF1, M3S1, TAAL6

Target/Specificity

This TM4SF1 antibody is generated from rabbits immunized with a KLH conjugated synthetic peptide between 16-45 amino acids from the N-terminal region of human TM4SF1.

Dilution

WB~~1:1000

IHC-P~~1:10~50

E~~Use at an assay dependent concentration.

Format

Purified polyclonal antibody supplied in PBS with 0.09% (W/V) sodium azide. This antibody is purified through a protein A column, followed by peptide affinity purification.

Storage

Maintain refrigerated at 2-8°C for up to 2 weeks. For long term storage store at -20°C in small aliquots to prevent freeze-thaw cycles.

Precautions

TM4SF1 Antibody (N-term) is for research use only and not for use in diagnostic or therapeutic procedures.

TM4SF1 Antibody (N-term) - Protein Information**Name** TM4SF1

Synonyms M3S1, TAAL6

Cellular Location

Membrane; Multi-pass membrane protein. Note=Colocalizes with SDCBP2 in the apical region of the cell (PubMed:11102519).

Tissue Location

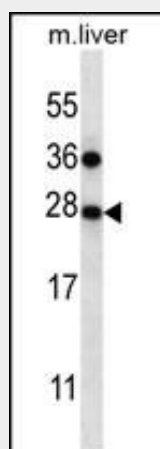
Highly expressed in lung, breast, colon and ovarian carcinomas. It is also present on some normal cells, endothelial cells in particular

TM4SF1 Antibody (N-term) - Protocols

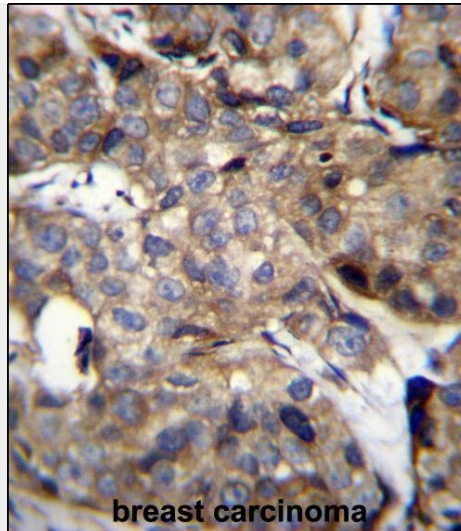
Provided below are standard protocols that you may find useful for product applications.

- [Western Blot](#)
- [Blocking Peptides](#)
- [Dot Blot](#)
- [Immunohistochemistry](#)
- [Immunofluorescence](#)
- [Immunoprecipitation](#)
- [Flow Cytometry](#)
- [Cell Culture](#)

TM4SF1 Antibody (N-term) - Images



TM4SF1 Antibody (N-term) (Cat. #AP12712a) western blot analysis in mouse liver tissue lysates (35ug/lane). This demonstrates the TM4SF1 antibody detected the TM4SF1 protein (arrow).



TM4SF1 Antibody (N-term) (Cat. #AP12712a) immunohistochemistry analysis in formalin fixed and paraffin embedded human breast carcinoma followed by peroxidase conjugation of the secondary antibody and DAB staining. This data demonstrates the use of TM4SF1 Antibody (N-term) for immunohistochemistry. Clinical relevance has not been evaluated.

TM4SF1 Antibody (N-term) - Background

The protein encoded by this gene is a member of the transmembrane 4 superfamily, also known as the tetraspanin family. Most of these members are cell-surface proteins that are characterized by the presence of four hydrophobic domains. The proteins mediate signal transduction events that play a role in the regulation of cell development, activation, growth and motility. This encoded protein is a cell surface antigen and is highly expressed in different carcinomas.

TM4SF1 Antibody (N-term) - References

Gordon, G.J., et al. J. Natl. Cancer Inst. 101(9):678-686(2009)
Lekishvili, T., et al. J. Cell. Sci. 121 (PT 5), 685-694 (2008) :
Stelzl, U., et al. Cell 122(6):957-968(2005)
Chang, Y.W., et al. Int. J. Cancer 116(2):243-252(2005)
Kao, Y.R., et al. Clin. Cancer Res. 9(7):2807-2816(2003)

TM4SF1 Antibody (N-term) - Citations

- [Transmembrane-4-L-six-family-1, a potential predictor for poor prognosis, overexpressed in human glioma.](#)