

CLEC18A Antibody (C-term)
Affinity Purified Rabbit Polyclonal Antibody (Pab)
Catalog # AP12716b**Specification**

CLEC18A Antibody (C-term) - Product Information

Application	IHC-P, WB,E
Primary Accession	A5D8T8
Other Accession	Q8NCF0 , Q6UXF7 , NP_872425.2
Reactivity	Human
Host	Rabbit
Clonality	Polyclonal
Isotype	Rabbit IgG
Calculated MW	49602
Antigen Region	338-367

CLEC18A Antibody (C-term) - Additional Information**Gene ID** 348174**Other Names**

C-type lectin domain family 18 member A, Mannose receptor-like protein 2, CLEC18A, MRLP2

Target/Specificity

This CLEC18A antibody is generated from rabbits immunized with a KLH conjugated synthetic peptide between 338-367 amino acids from the C-terminal region of human CLEC18A.

Dilution

IHC-P~~1:10~50

WB~~1:1000

E~~Use at an assay dependent concentration.

Format

Purified polyclonal antibody supplied in PBS with 0.09% (W/V) sodium azide. This antibody is purified through a protein A column, followed by peptide affinity purification.

Storage

Maintain refrigerated at 2-8°C for up to 2 weeks. For long term storage store at -20°C in small aliquots to prevent freeze-thaw cycles.

Precautions

CLEC18A Antibody (C-term) is for research use only and not for use in diagnostic or therapeutic procedures.

CLEC18A Antibody (C-term) - Protein Information**Name** CLEC18A

Synonyms MRLP2

Function Binds polysaccharides in a Ca(2+)-independent manner with a preferential binding to fucoidan, beta-glucans and galactans (PubMed:[26170455](#)).

Cellular Location

Secreted. Endoplasmic reticulum. Golgi apparatus. Endosome

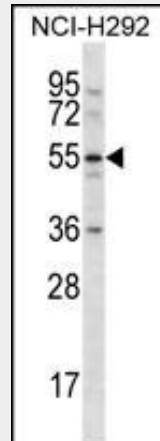
Tissue Location

Detected in all cell lines tested and in peripheral blood cells.

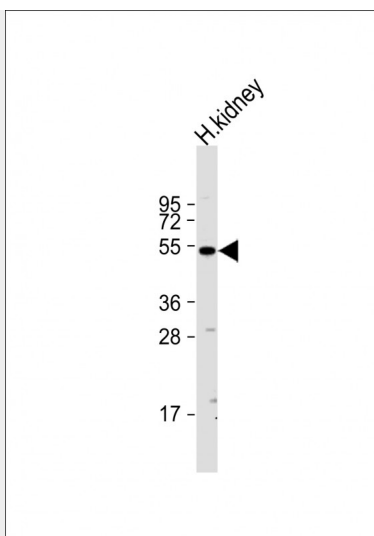
CLEC18A Antibody (C-term) - Protocols

Provided below are standard protocols that you may find useful for product applications.

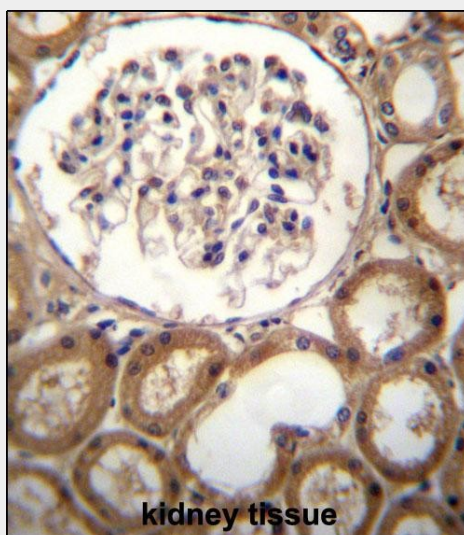
- [Western Blot](#)
- [Blocking Peptides](#)
- [Dot Blot](#)
- [Immunohistochemistry](#)
- [Immunofluorescence](#)
- [Immunoprecipitation](#)
- [Flow Cytometry](#)
- [Cell Culture](#)

CLEC18A Antibody (C-term) - Images

CLEC18A Antibody (C-term) (Cat. #AP12716b) western blot analysis in NCI-H292 cell line lysates (35ug/lane). This demonstrates the CLEC18A antibody detected the CLEC18A protein (arrow).



Anti-CLEC18A Antibody (C-term) at 1:1000 dilution + human kidney lysate Lysates/proteins at 20 µg per lane. Secondary Goat Anti-Rabbit IgG, (H+L), Peroxidase conjugated at 1/10000 dilution. Predicted band size : 50 kDa Blocking/Dilution buffer: 5% NFDM/TBST.



CLEC18A Antibody (C-term) (Cat. #AP12716b) immunohistochemistry analysis in formalin fixed and paraffin embedded human kidney tissue followed by peroxidase conjugation of the secondary antibody and DAB staining. This data demonstrates the use of CLEC18A Antibody (C-term) for immunohistochemistry. Clinical relevance has not been evaluated.

CLEC18A Antibody (C-term) - Background

The function of this protein remains unknown.

CLEC18A Antibody (C-term) - References

Lamesch, P., et al. Genomics 89(3):307-315(2007)
Clark, H.F., et al. Genome Res. 13(10):2265-2270(2003)