

RIC3 Antibody (C-term)
Affinity Purified Rabbit Polyclonal Antibody (Pab)
Catalog # AP12721b

Specification

RIC3 Antibody (C-term) - Product Information

Application	WB, IHC-P,E
Primary Accession	Q7Z5B4
Other Accession	NP_001128581.1
Reactivity	Human
Host	Rabbit
Clonality	Polyclonal
Isotype	Rabbit IgG
Calculated MW	41092
Antigen Region	313-341

RIC3 Antibody (C-term) - Additional Information

Gene ID 79608

Other Names

Protein RIC-3, Resistant to inhibitor of cholinesterase 3, RIC3

Target/Specificity

This RIC3 antibody is generated from rabbits immunized with a KLH conjugated synthetic peptide between 313-341 amino acids from the C-terminal region of human RIC3.

Dilution

WB~~1:1000

IHC-P~~1:10~50

Format

Purified polyclonal antibody supplied in PBS with 0.09% (W/V) sodium azide. This antibody is purified through a protein A column, followed by peptide affinity purification.

Storage

Maintain refrigerated at 2-8°C for up to 2 weeks. For long term storage store at -20°C in small aliquots to prevent freeze-thaw cycles.

Precautions

RIC3 Antibody (C-term) is for research use only and not for use in diagnostic or therapeutic procedures.

RIC3 Antibody (C-term) - Protein Information

Name RIC3

Function Molecular chaperone which facilitates proper subunit assembly and surface trafficking of

alpha-7 (CHRNA7) and alpha-8 (CHRNA8) nicotinic acetylcholine receptors (PubMed:[12821669](#), PubMed:[15504725](#), PubMed:[16120769](#), PubMed:[18691158](#), PubMed:[32204458](#)). May also promote functional expression of homomeric serotonergic 5-HT3 receptors, and of heteromeric acetylcholine receptors alpha-3/beta-2, alpha-3/beta-4, alpha-4/beta-2 and alpha-4/beta-4.

Cellular Location

[Isoform 1]: Endoplasmic reticulum membrane; Single-pass membrane protein

Tissue Location

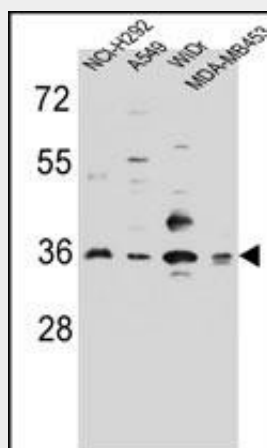
Broadly expressed, with high levels in muscle, brain, heart, pancreas and testis. In the central nervous system, highest levels are detected in the cerebellum and pituitary gland Over-expressed in brains from patients with bipolar disease or schizophrenia. Isoform 5 is predominantly expressed in the brain

RIC3 Antibody (C-term) - Protocols

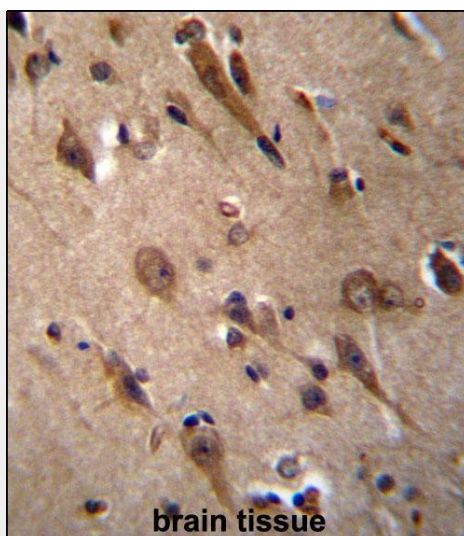
Provided below are standard protocols that you may find useful for product applications.

- [Western Blot](#)
- [Blocking Peptides](#)
- [Dot Blot](#)
- [Immunohistochemistry](#)
- [Immunofluorescence](#)
- [Immunoprecipitation](#)
- [Flow Cytometry](#)
- [Cell Culture](#)

RIC3 Antibody (C-term) - Images



RIC3 Antibody (C-term) (Cat. #AP12721b) western blot analysis in NCI-H292,A549,WiDr,MDA-MB453 cell line lysates (35ug/lane).This demonstrates the RIC3 antibody detected the RIC3 protein (arrow).



RIC3 Antibody (C-term) (Cat. #AP12721b) immunohistochemistry analysis in formalin fixed and paraffin embedded human brain tissue followed by peroxidase conjugation of the secondary antibody and DAB staining. This data demonstrates the use of RIC3 Antibody (C-term) for immunohistochemistry. Clinical relevance has not been evaluated.

RIC3 Antibody (C-term) - Background

RIC3 is a protein associated with nicotinic acetylcholine receptors (nAChRs), neurotransmitter-gated ion channels expressed at the neuromuscular junction and within the central and peripheral nervous systems, that can enhance functional expression of multiple nAChR subtypes (Lansdell et al., 2005 [PubMed 16120769]). [supplied by OMIM].

RIC3 Antibody (C-term) - References

Walstab, J., et al. J. Biol. Chem. 285(35):26956-26965(2010)
Bailey, S.D., et al. Diabetes Care (2010) In press :
Talmud, P.J., et al. Am. J. Hum. Genet. 85(5):628-642(2009)
Seredenina, T., et al. Biosci. Rep. 28(6):299-306(2008)
Roncarati, R., et al. Assay Drug Dev Technol 6(2):181-193(2008)