

NKX2-2 Antibody (Center)
Affinity Purified Rabbit Polyclonal Antibody (Pab)
Catalog # AP12730c**Specification**

NKX2-2 Antibody (Center) - Product Information

| | |
|-------------------|-----------------------------|
| Application | WB,E |
| Primary Accession | O95096 |
| Other Accession | NP_002500.1 |
| Reactivity | Human |
| Host | Rabbit |
| Clonality | Polyclonal |
| Isotype | Rabbit IgG |
| Calculated MW | 30133 |
| Antigen Region | 2-2 |

NKX2-2 Antibody (Center) - Additional Information**Gene ID** 4821**Other Names**

Homeobox protein Nkx-22, Homeobox protein NK-2 homolog B, NKX2-2, NKX22, NKX2B

Target/Specificity

This NKX2-2 antibody is generated from rabbits immunized with a KLH conjugated synthetic peptide between 91-120 amino acids from the Central region of human NKX2-2.

Dilution

WB~~1:1000

E~~Use at an assay dependent concentration.

Format

Purified polyclonal antibody supplied in PBS with 0.09% (W/V) sodium azide. This antibody is purified through a protein A column, followed by peptide affinity purification.

Storage

Maintain refrigerated at 2-8°C for up to 2 weeks. For long term storage store at -20°C in small aliquots to prevent freeze-thaw cycles.

Precautions

NKX2-2 Antibody (Center) is for research use only and not for use in diagnostic or therapeutic procedures.

NKX2-2 Antibody (Center) - Protein Information**Name** NKX2-2**Synonyms** NKX2.2, NKX2B

Function Transcriptional activator involved in the development of insulin-producing beta cells in the endocrine pancreas (By similarity). May also be involved in specifying diencephalic neuromeric boundaries, and in controlling the expression of genes that play a role in axonal guidance. Binds to elements within the NEUROD1 promoter (By similarity).

Cellular Location

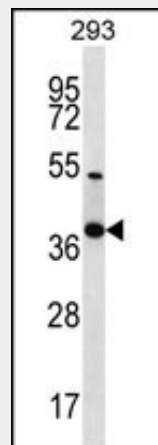
Nucleus {ECO:0000255|PROSITE-ProRule:PRU00108}.

NKX2-2 Antibody (Center) - Protocols

Provided below are standard protocols that you may find useful for product applications.

- [Western Blot](#)
- [Blocking Peptides](#)
- [Dot Blot](#)
- [Immunohistochemistry](#)
- [Immunofluorescence](#)
- [Immunoprecipitation](#)
- [Flow Cytometry](#)
- [Cell Culture](#)

NKX2-2 Antibody (Center) - Images



NKX2-2 Antibody (Center) (Cat. #AP12730c) western blot analysis in 293 cell line lysates (35ug/lane). This demonstrates the NKX2-2 antibody detected the NKX2-2 protein (arrow).

NKX2-2 Antibody (Center) - Background

The protein encoded by this gene contains a homeobox domain and may be involved in the morphogenesis of the central nervous system. This gene is found on chromosome 20 near NKX2-4, and these two genes appear to be duplicated on chromosome 14 in the form of TITF1 and NKX2-8. The encoded protein is likely to be a nuclear transcription factor.

NKX2-2 Antibody (Center) - References

Wang, Y.C., et al. J. Surg. Res. 163(1):47-51(2010)
Wang, Y.C., et al. Endocr. Relat. Cancer 16(1):267-279(2009)
Chen, M., et al. J. Biol. Chem. 284(3):1484-1494(2009)

Owen, L.A., et al. PLoS ONE 3 (4), E1965 (2008) :
Pauls, S., et al. Dev. Biol. 304(2):875-890(2007)