

KRT12 Antibody (C-term)
Affinity Purified Rabbit Polyclonal Antibody (Pab)
Catalog # AP12735b

Specification

KRT12 Antibody (C-term) - Product Information

Application	WB, IHC-P, FC,E
Primary Accession	Q99456
Other Accession	NP_000214.1
Reactivity	Human, Mouse, Rat
Host	Rabbit
Clonality	Polyclonal
Isotype	Rabbit IgG
Antigen Region	442-471

KRT12 Antibody (C-term) - Additional Information

Gene ID 3859

Other Names

Keratin, type I cytoskeletal 12, Cytokeratin-12, CK-12, Keratin-12, K12, KRT12

Target/Specificity

This KRT12 antibody is generated from rabbits immunized with a KLH conjugated synthetic peptide between 442-471 amino acids from the C-terminal region of human KRT12.

Dilution

WB~~1:2000

IHC-P~~1:10~50

FC~~1:25

E~~Use at an assay dependent concentration.

Format

Purified polyclonal antibody supplied in PBS with 0.09% (W/V) sodium azide. This antibody is purified through a protein A column, followed by peptide affinity purification.

Storage

Maintain refrigerated at 2-8°C for up to 2 weeks. For long term storage store at -20°C in small aliquots to prevent freeze-thaw cycles.

Precautions

KRT12 Antibody (C-term) is for research use only and not for use in diagnostic or therapeutic procedures.

KRT12 Antibody (C-term) - Protein Information

Name KRT12

Function Involved in corneal epithelium organization, integrity and corneal keratin expression.

Tissue Location

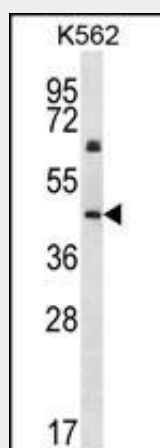
Expressed in the corneal epithelium (at protein level).

KRT12 Antibody (C-term) - Protocols

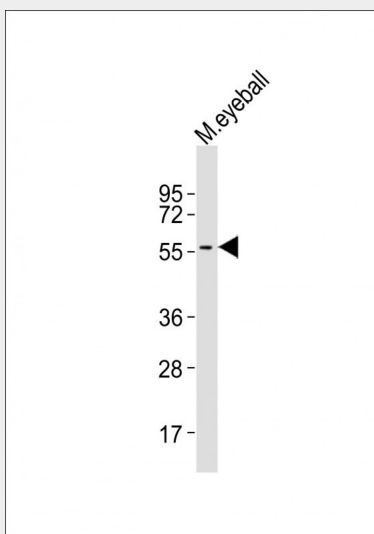
Provided below are standard protocols that you may find useful for product applications.

- [Western Blot](#)
- [Blocking Peptides](#)
- [Dot Blot](#)
- [Immunohistochemistry](#)
- [Immunofluorescence](#)
- [Immunoprecipitation](#)
- [Flow Cytometry](#)
- [Cell Culture](#)

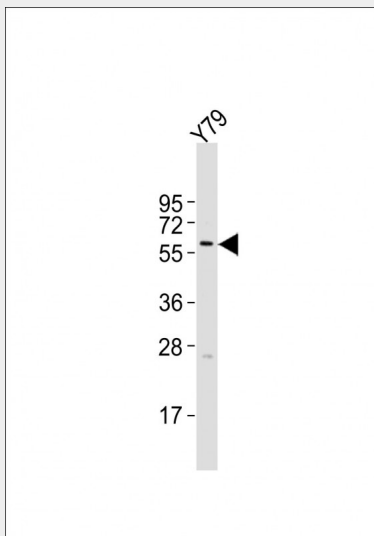
KRT12 Antibody (C-term) - Images



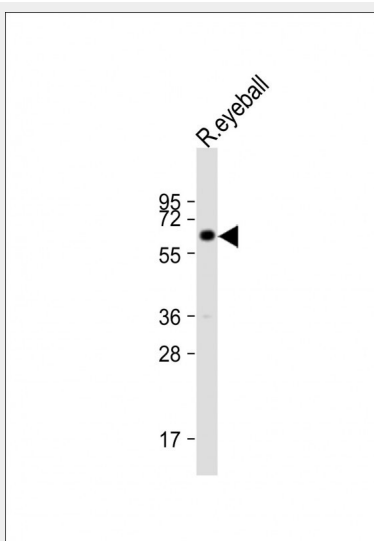
KRT12 Antibody (C-term) (Cat. #AP12735b) western blot analysis in K562 cell line lysates (35ug/lane). This demonstrates the KRT12 antibody detected the KRT12 protein (arrow).



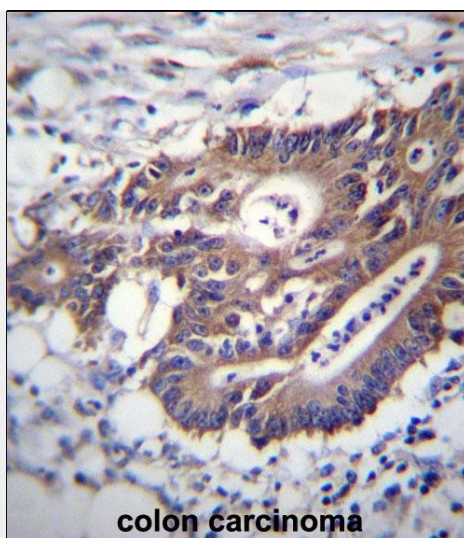
Anti-KRT12 Antibody (C-term) at 1:2000 dilution + mouse eyeball lysates Lysates/proteins at 20 μ g per lane. Secondary Goat Anti-Rabbit IgG, (H+L), Peroxidase conjugated at 1/10000 dilution Predicted band size : 53 kDa Blocking/Dilution buffer: 5% NFDM/TBST.



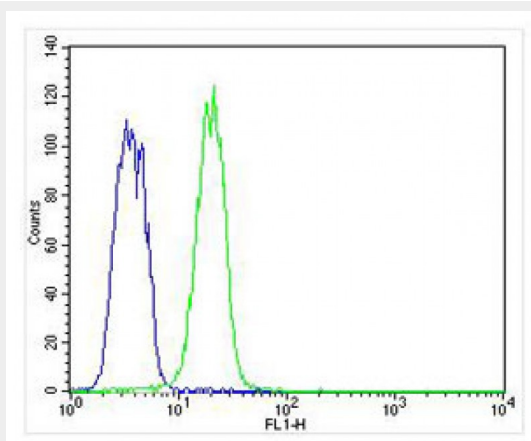
Anti-KRT12 Antibody (C-term) at 1:500 dilution + Y79 whole cell lysates Lysates/proteins at 20 μ g per lane. Secondary Goat Anti-Rabbit IgG, (H+L), Peroxidase conjugated at 1/10000 dilution Predicted band size : 53 kDa Blocking/Dilution buffer: 5% NFDM/TBST.



Anti-KRT12 Antibody (C-term) at 1:2000 dilution + rat eyeball lysate Lysates/proteins at 20 μ g per lane. Secondary Goat Anti-Rabbit IgG, (H+L), Peroxidase conjugated at 1/10000 dilution. Predicted band size : 54 kDa Blocking/Dilution buffer: 5% NFDM/TBST.



KRT12 Antibdy (C-term) (Cat. #AP12735b) immunohistochemistry analysis in formalin fixed and paraffin embedded human colon carcinoma followed by peroxidase conjugation of the secondary antibody and DAB staining. This data demonstrates the use of KRT12 Antibdy (C-term) for immunohistochemistry. Clinical relevance has not been evaluated.



Overlay histogram showing K562 cells stained with AP12735b (green line). The cells were fixed with 4% paraformaldehyde (10 min) and then permeabilized with 90% methanol for 10 min. The cells were then incubated in 2% bovine serum albumin to block non-specific protein-protein interactions followed by the antibody (AP12735b, 1:25 dilution) for 60 min at 37°C. The secondary antibody used was Alexa Fluor® 488 goat anti-rabbit IgG (H+L) (1583138) at 1/400 dilution for 40 min at 37°C. Isotype control antibody (blue line) was rabbit IgG1 (1µg/1x10⁶ cells) used under the same conditions. Acquisition of >10,000 events was performed.

KRT12 Antibody (C-term) - Background

KRT12 encodes the type I intermediate filament chain keratin 12, expressed in corneal epithelia. Mutations in this gene lead to Meesmann corneal dystrophy.

KRT12 Antibody (C-term) - References

Clausen, I., et al. Mol. Vis. 16, 954-960 (2010) :
Seto, T., et al. Jpn. J. Ophthalmol. 52(3):224-226(2008)
Nielsen, K., et al. Cornea 27(1):100-102(2008)
Sullivan, L.S., et al. Mol. Vis. 13, 975-980 (2007) :

Schweizer, J., et al. J. Cell Biol. 174(2):169-174(2006)

KRT12 Antibody (C-term) - Citations

- [Gamma-irradiated human amniotic membrane decellularised with sodium dodecyl sulfate is a more efficient substrate for the ex vivo expansion of limbal stem cells.](#)
- [An important role for adenine, cholera toxin, hydrocortisone and triiodothyronine in the proliferation, self-renewal and differentiation of limbal stem cells in vitro.](#)