

**ATP1B3 Antibody (C-term)**  
**Affinity Purified Rabbit Polyclonal Antibody (Pab)**  
**Catalog # AP12745b****Specification**

---

**ATP1B3 Antibody (C-term) - Product Information**

Application	WB, IHC-P,E
Primary Accession	<a href="#">P54709</a>
Other Accession	<a href="#">NP_001670.1</a>
Reactivity	Human
Host	Rabbit
Clonality	Polyclonal
Isotype	Rabbit IgG
Calculated MW	31513
Antigen Region	241-270

**ATP1B3 Antibody (C-term) - Additional Information****Gene ID** 483**Other Names**

Sodium/potassium-transporting ATPase subunit beta-3, Sodium/potassium-dependent ATPase subunit beta-3, ATPB-3, CD298, ATP1B3

**Target/Specificity**

This ATP1B3 antibody is generated from rabbits immunized with a KLH conjugated synthetic peptide between 241-270 amino acids from the C-terminal region of human ATP1B3.

**Dilution**

WB~~1:1000

IHC-P~~1:10~50

**Format**

Purified polyclonal antibody supplied in PBS with 0.09% (W/V) sodium azide. This antibody is purified through a protein A column, followed by peptide affinity purification.

**Storage**

Maintain refrigerated at 2-8°C for up to 2 weeks. For long term storage store at -20°C in small aliquots to prevent freeze-thaw cycles.

**Precautions**

ATP1B3 Antibody (C-term) is for research use only and not for use in diagnostic or therapeutic procedures.

**ATP1B3 Antibody (C-term) - Protein Information****Name** ATP1B3

**Function** This is the non-catalytic component of the active enzyme, which catalyzes the hydrolysis of ATP coupled with the exchange of Na(+) and K(+) ions across the plasma membrane. The exact function of the beta-3 subunit is not known.

#### Cellular Location

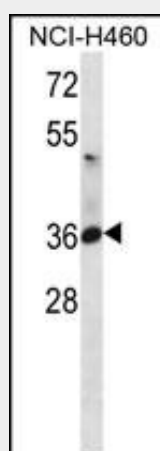
Apical cell membrane {ECO:0000250|UniProtKB:Q63377}; Single-pass type II membrane protein. Basolateral cell membrane {ECO:0000250|UniProtKB:Q63377}; Single-pass type II membrane protein. Melanosome Note=Identified by mass spectrometry in melanosome fractions from stage I to stage IV

#### ATP1B3 Antibody (C-term) - Protocols

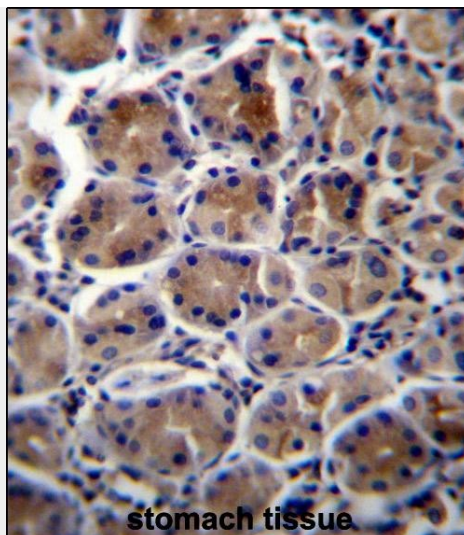
Provided below are standard protocols that you may find useful for product applications.

- [Western Blot](#)
- [Blocking Peptides](#)
- [Dot Blot](#)
- [Immunohistochemistry](#)
- [Immunofluorescence](#)
- [Immunoprecipitation](#)
- [Flow Cytometry](#)
- [Cell Culture](#)

#### ATP1B3 Antibody (C-term) - Images



ATP1B3 Antibody (C-term) (Cat. #AP12745b) western blot analysis in NCI-H460 cell line lysates (35ug/lane). This demonstrates the ATP1B3 antibody detected the ATP1B3 protein (arrow).



ATP1B3 Antibody (C-term) (Cat. #AP12745b) immunohistochemistry analysis in formalin fixed and paraffin embedded human stomach tissue followed by peroxidase conjugation of the secondary antibody and DAB staining. This data demonstrates the use of ATP1B3 Antibody (C-term) for immunohistochemistry. Clinical relevance has not been evaluated.

#### **ATP1B3 Antibody (C-term) - Background**

The protein encoded by this gene belongs to the family of Na<sup>+</sup>/K<sup>+</sup> and H<sup>+</sup>/K<sup>+</sup> ATPases beta chain proteins, and to the subfamily of Na<sup>+</sup>/K<sup>+</sup> -ATPases. Na<sup>+</sup>/K<sup>+</sup> -ATPase is an integral membrane protein responsible for establishing and maintaining the electrochemical gradients of Na and K ions across the plasma membrane. These gradients are essential for osmoregulation, for sodium-coupled transport of a variety of organic and inorganic molecules, and for electrical excitability of nerve and muscle. This enzyme is composed of two subunits, a large catalytic subunit (alpha) and a smaller glycoprotein subunit (beta). The beta subunit regulates, through assembly of alpha/beta heterodimers, the number of sodium pumps transported to the plasma membrane. The glycoprotein subunit of Na<sup>+</sup>/K<sup>+</sup> -ATPase is encoded by multiple genes. This gene encodes a beta 3 subunit. This gene encodes a beta 3 subunit. A pseudogene exists for this gene, and it is located on chromosome 2. [provided by RefSeq].

#### **ATP1B3 Antibody (C-term) - References**

Floyd, R.V., et al. Reprod Sci 17(4):366-376(2010)  
Aughey, R.J., et al. J. Appl. Physiol. 103(1):39-47(2007)  
Ewing, R.M., et al. Mol. Syst. Biol. 3, 89 (2007) :  
Chiampanichayakul, S., et al. Tissue Antigens 68(6):509-517(2006)  
Chi, A., et al. J. Proteome Res. 5(11):3135-3144(2006)

#### **ATP1B3 Antibody (C-term) - Citations**

- [Mapping of the N-linked glycoproteome of human spermatozoa.](#)