

CDCA8 Antibody (N-term)
Purified Rabbit Polyclonal Antibody (Pab)
Catalog # AP12760a**Specification**

CDCA8 Antibody (N-term) - Product Information

Application	FC, IHC-P, WB,E
Primary Accession	Q53HL2
Other Accession	NP_060571.1
Reactivity	Human
Host	Rabbit
Clonality	Polyclonal
Isotype	Rabbit IgG
Calculated MW	31323
Antigen Region	9-38

CDCA8 Antibody (N-term) - Additional Information**Gene ID** 55143**Other Names**

Borealin, Cell division cycle-associated protein 8, Dasra-B, hDasra-B, Pluripotent embryonic stem cell-related gene 3 protein, CDCA8, PESCRG3

Target/Specificity

This CDCA8 antibody is generated from rabbits immunized with a KLH conjugated synthetic peptide between 9-38 amino acids from the N-terminal region of human CDCA8.

Dilution

FC~~1:10~50

IHC-P~~1:10~50

WB~~1:1000

E~~Use at an assay dependent concentration.

Format

Purified polyclonal antibody supplied in PBS with 0.09% (W/V) sodium azide. This antibody is prepared by Saturated Ammonium Sulfate (SAS) precipitation followed by dialysis against PBS.

Storage

Maintain refrigerated at 2-8°C for up to 2 weeks. For long term storage store at -20°C in small aliquots to prevent freeze-thaw cycles.

Precautions

CDCA8 Antibody (N-term) is for research use only and not for use in diagnostic or therapeutic procedures.

CDCA8 Antibody (N-term) - Protein Information

Name CDCA8

Synonyms PESCRG3

Function Component of the chromosomal passenger complex (CPC), a complex that acts as a key regulator of mitosis. The CPC complex has essential functions at the centromere in ensuring correct chromosome alignment and segregation and is required for chromatin-induced microtubule stabilization and spindle assembly. Major effector of the TTK kinase in the control of attachment-error-correction and chromosome alignment.

Cellular Location

Nucleus, nucleolus. Cytoplasm. Cytoplasm, cytoskeleton, spindle. Chromosome, centromere.

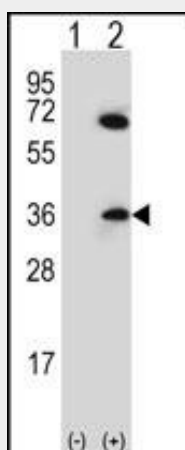
Note=Localizes on chromosome arms and inner centromeres from prophase through metaphase and then transferring to the spindle midzone and midbody from anaphase through cytokinesis
Colocalizes with SENP3 in the nucleolus in interphase cells

CDCA8 Antibody (N-term) - Protocols

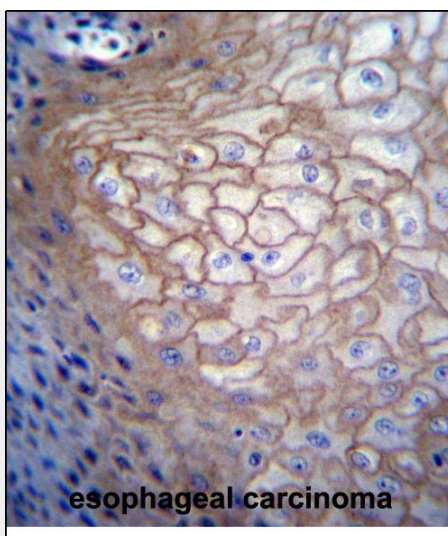
Provided below are standard protocols that you may find useful for product applications.

- [Western Blot](#)
- [Blocking Peptides](#)
- [Dot Blot](#)
- [Immunohistochemistry](#)
- [Immunofluorescence](#)
- [Immunoprecipitation](#)
- [Flow Cytometry](#)
- [Cell Culture](#)

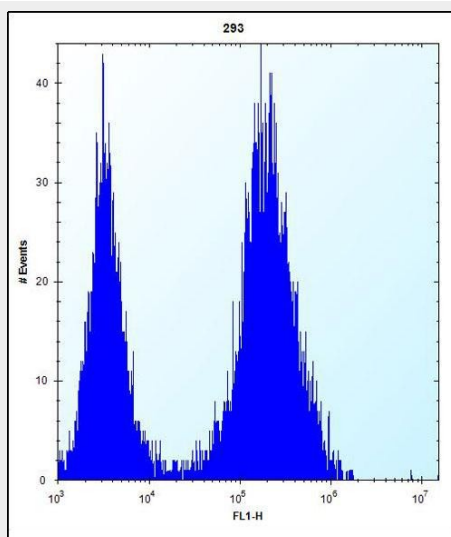
CDCA8 Antibody (N-term) - Images



Western blot analysis of CDCA8 (arrow) using rabbit polyclonal CDCA8 Antibody (N-term) (Cat. #AP12760a). 293 cell lysates (2 ug/lane) either nontransfected (Lane 1) or transiently transfected (Lane 2) with the CDCA8 gene.



CDCA8 Antibody (N-term) (Cat. #AP12760a) immunohistochemistry analysis in formalin fixed and paraffin embedded human esophageal carcinoma followed by peroxidase conjugation of the secondary antibody and DAB staining. This data demonstrates the use of CDCA8 Antibody (N-term) for immunohistochemistry. Clinical relevance has not been evaluated.



CDCA8 Antibody (N-term) (Cat. #AP12760a) flow cytometric analysis of 293 cells (right histogram) compared to a negative control cell (left histogram). FITC-conjugated goat-anti-rabbit secondary antibodies were used for the analysis.

CDCA8 Antibody (N-term) - Background

CDCA8 is a component of a chromosomal passenger complex required for stability of the bipolar mitotic spindle (Gassmann et al., 2004 [PubMed 15249581]).

CDCA8 Antibody (N-term) - References

- Bourhis, E., et al. Biochemistry 48(29):6783-6793(2009)
- Zhang, Q., et al. Mol. Biol. Rep. 36(3):603-609(2009)
- Klein, U.R., et al. Mol. Biol. Cell 20(1):410-418(2009)
- Xia, F., et al. Mol. Cell. Biol. 28(17):5299-5311(2008)
- Jelluma, N., et al. Cell 132(2):233-246(2008)