

ELF4 Antibody (N-term)
Affinity Purified Rabbit Polyclonal Antibody (Pab)
Catalog # AP12761A

Specification

ELF4 Antibody (N-term) - Product Information

Application	WB,E
Primary Accession	O99607
Other Accession	NP_001412.1 , NP_001120669.1
Reactivity	Human
Host	Rabbit
Clonality	Polyclonal
Isotype	Rabbit IgG
Calculated MW	70730
Antigen Region	161-188

ELF4 Antibody (N-term) - Additional Information

Gene ID 2000

Other Names

ETS-related transcription factor Elf-4, E74-like factor 4, Myeloid Elf-1-like factor, ELF4
{ECO:0000312|EMBL:CAI428821}

Target/Specificity

This ELF4 antibody is generated from rabbits immunized with a KLH conjugated synthetic peptide between 161-188 amino acids from the N-terminal region of human ELF4.

Dilution

WB~~1:1000
E~~Use at an assay dependent concentration.

Format

Purified polyclonal antibody supplied in PBS with 0.09% (W/V) sodium azide. This antibody is purified through a protein A column, followed by peptide affinity purification.

Storage

Maintain refrigerated at 2-8°C for up to 2 weeks. For long term storage store at -20°C in small aliquots to prevent freeze-thaw cycles.

Precautions

ELF4 Antibody (N-term) is for research use only and not for use in diagnostic or therapeutic procedures.

ELF4 Antibody (N-term) - Protein Information

Name ELF4 {ECO:0000312|EMBL:CAI42882.1}

Function Transcriptional activator that binds to DNA sequences containing the consensus 5'-WGGA-3'. Transactivates promoters of the hematopoietic growth factor genes CSF2, IL3, IL8, and of the bovine lysozyme gene. Acts synergistically with RUNX1 to transactivate the IL3 promoter (By similarity). Transactivates the PRF1 promoter in natural killer (NK) cells and CD8+ T cells (PubMed:[34326534](#)). Plays a role in the development and function of NK and NK T-cells and in innate immunity. Controls the proliferation and homing of CD8+ T-cells via the Kruppel-like factors KLF4 and KLF2 (By similarity). Controls cell senescence in a p53-dependent manner. Can also promote cellular transformation through inhibition of the p16 pathway. Is a transcriptional regulator of inflammation, controlling T-helper 17 (Th17) cells and macrophage inflammatory responses. Required for sustained transcription of anti-inflammatory genes, including IL1RN (PubMed:[34326534](#), PubMed:[35266071](#)). Is a negative regulator of pro-inflammatory cytokines expression including IL17A, IL1B, IL6, TNFA and CXCL1 (PubMed:[34326534](#), PubMed:[35266071](#)). Down-regulates expression of TREM1, a cell surface receptor involved in the amplification of inflammatory responses (By similarity) (PubMed:[34326534](#), PubMed:[35266071](#)).

Cellular Location

Nucleus, PML body. Note=Accumulation into PML nuclear bodies is mediated by PML

Tissue Location

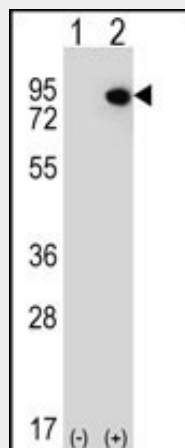
Abundantly expressed in the placenta and in a variety of myeloid leukemia cell lines. Moderate levels of expression in heart, lung, spleen, thymus, peripheral blood lymphocytes, ovary and colon. Lower levels of expression in Jurkat T-cells and other T-cell lines and no expression in brain.

ELF4 Antibody (N-term) - Protocols

Provided below are standard protocols that you may find useful for product applications.

- [Western Blot](#)
- [Blocking Peptides](#)
- [Dot Blot](#)
- [Immunohistochemistry](#)
- [Immunofluorescence](#)
- [Immunoprecipitation](#)
- [Flow Cytometry](#)
- [Cell Culture](#)

ELF4 Antibody (N-term) - Images



Western blot analysis of ELF4 (arrow) using rabbit polyclonal ELF4 Antibody (N-term) (Cat. #AP12761a). 293 cell lysates (2 ug/lane) either nontransfected (Lane 1) or transiently transfected

(Lane 2) with the ELF4 gene.

ELF4 Antibody (N-term) - Background

The protein encoded by this gene is a transcriptional activator that binds and activates the promoters of the CSF2, IL3, IL8, and PRF1 genes. The encoded protein is involved in natural killer cell development and function, innate immunity, and induction of cell cycle arrest in naive CD8+ cells. Two transcript variants encoding the same protein have been found for this gene.

ELF4 Antibody (N-term) - References

Yamada, T., et al. Nat. Immunol. 10(6):618-626(2009)
Sugiyama, N., et al. Mol. Cell Proteomics 6(6):1103-1109(2007)
Moore, S.D., et al. Leuk. Res. 30(8):1037-1042(2006)
Liu, Y., et al. Mol. Cell. Biol. 26(8):3114-3123(2006)
Koga, T., et al. FEBS Lett. 579(13):2811-2816(2005)

ELF4 Antibody (N-term) - Citations

- [Association of Glioblastoma Multiforme Stem Cell Characteristics, Differentiation, and Microglia Marker Genes with Patient Survival.](#)