

**SPOPL Antibody (Center)**  
**Affinity Purified Rabbit Polyclonal Antibody (Pab)**  
**Catalog # AP12768c****Specification**

---

**SPOPL Antibody (Center) - Product Information**

Application	WB, IHC-P, FC,E
Primary Accession	<a href="#">O6IQ16</a>
Other Accession	<a href="#">NP_001001664.1</a>
Reactivity	Human
Host	Rabbit
Clonality	Polyclonal
Isotype	Rabbit IgG
Calculated MW	44647
Antigen Region	221-249

**SPOPL Antibody (Center) - Additional Information****Gene ID** 339745**Other Names**

Speckle-type POZ protein-like, HIB homolog 2, Roadkill homolog 2, SPOPL

**Target/Specificity**

This SPOPL antibody is generated from rabbits immunized with a KLH conjugated synthetic peptide between 221-249 amino acids from the Central region of human SPOPL.

**Dilution**

WB~~1:1000  
IHC-P~~1:10~50  
FC~~1:10~50

**Format**

Purified polyclonal antibody supplied in PBS with 0.09% (W/V) sodium azide. This antibody is purified through a protein A column, followed by peptide affinity purification.

**Storage**

Maintain refrigerated at 2-8°C for up to 2 weeks. For long term storage store at -20°C in small aliquots to prevent freeze-thaw cycles.

**Precautions**

SPOPL Antibody (Center) is for research use only and not for use in diagnostic or therapeutic procedures.

**SPOPL Antibody (Center) - Protein Information****Name** SPOPL

**Function** Component of a cullin-RING-based BCR (BTB-CUL3-RBX1) E3 ubiquitin-protein ligase complex that mediates the ubiquitination and subsequent proteasomal degradation of target proteins, but with relatively low efficiency. Cullin-RING-based BCR (BTB-CUL3-RBX1) E3 ubiquitin-protein ligase complexes containing homodimeric SPOPL or the heterodimer formed by SPOP and SPOPL are less efficient than ubiquitin ligase complexes containing only SPOP. May function to down-regulate the activity of cullin-RING-based BCR (BTB-CUL3-RBX1) E3 ubiquitin-protein ligase complexes that contain SPOP.

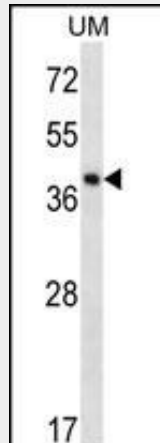
**Cellular Location**

Nucleus.

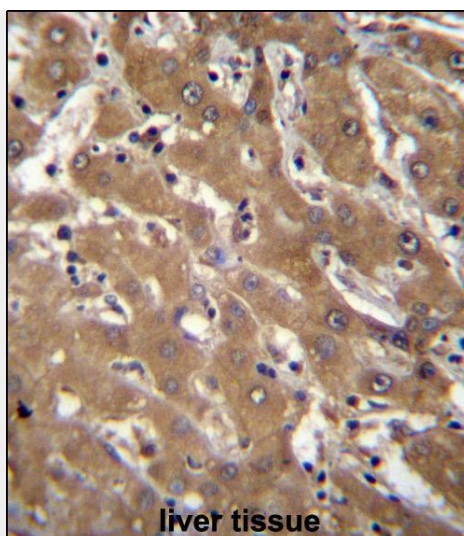
**SPOPL Antibody (Center) - Protocols**

Provided below are standard protocols that you may find useful for product applications.

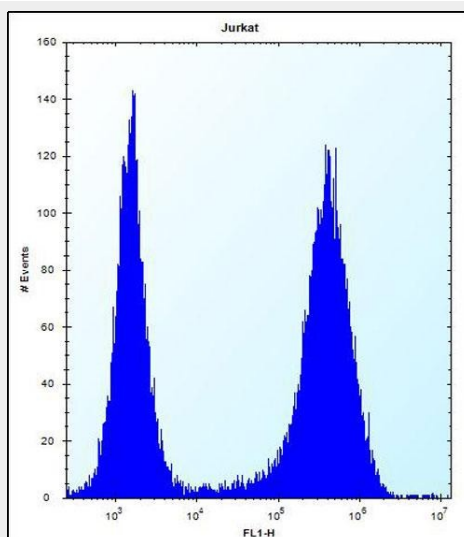
- [Western Blot](#)
- [Blocking Peptides](#)
- [Dot Blot](#)
- [Immunohistochemistry](#)
- [Immunofluorescence](#)
- [Immunoprecipitation](#)
- [Flow Cytometry](#)
- [Cell Culture](#)

**SPOPL Antibody (Center) - Images**

SPOPL Antibody (Center) (Cat. #AP12768c) western blot analysis in uterus tumor cell line lysates (35ug/lane). This demonstrates the SPOPL antibody detected the SPOPL protein (arrow).



SPOPL Antibody (Center) (Cat. #AP12768c) immunohistochemistry analysis in formalin fixed and paraffin embedded human liver tissue followed by peroxidase conjugation of the secondary antibody and DAB staining. This data demonstrates the use of SPOPL Antibody (Center) for immunohistochemistry. Clinical relevance has not been evaluated.



SPOPL Antibody (Center) (Cat. #AP12768c) flow cytometric analysis of Jurkat cells (right histogram) compared to a negative control cell (left histogram). FITC-conjugated donkey-anti-rabbit secondary antibodies were used for the analysis.

### **SPOPL Antibody (Center) - Background**

In complex with a cullin, may act in ubiquitination and proteasomal degradation processes (By similarity).

### **SPOPL Antibody (Center) - References**

- Lamesch, P., et al. Genomics 89(3):307-315(2007)
- Zhang, Q., et al. Dev. Cell 10(6):719-729(2006)
- Kent, D., et al. Development 133(10):2001-2010(2006)