

**PLEKHH1 Antibody (C-term)**  
**Affinity Purified Rabbit Polyclonal Antibody (Pab)**  
**Catalog # AP12777b**

**Specification**

---

**PLEKHH1 Antibody (C-term) - Product Information**

Application	FC, IHC-P, WB,E
Primary Accession	<a href="#">O9ULM0</a>
Other Accession	<a href="#">NP_065766.1</a>
Reactivity	Human
Host	Rabbit
Clonality	Polyclonal
Isotype	Rabbit IgG
Calculated MW	151232
Antigen Region	1082-1110

**PLEKHH1 Antibody (C-term) - Additional Information**

**Gene ID** 57475

**Other Names**

Pleckstrin homology domain-containing family H member 1, PH domain-containing family H member 1, PLEKHH1, KIAA1200

**Target/Specificity**

This PLEKHH1 antibody is generated from rabbits immunized with a KLH conjugated synthetic peptide between 1082-1110 amino acids from the C-terminal region of human PLEKHH1.

**Dilution**

FC~~1:10~50

IHC-P~~1:10~50

WB~~1:1000

E~~Use at an assay dependent concentration.

**Format**

Purified polyclonal antibody supplied in PBS with 0.09% (W/V) sodium azide. This antibody is purified through a protein A column, followed by peptide affinity purification.

**Storage**

Maintain refrigerated at 2-8°C for up to 2 weeks. For long term storage store at -20°C in small aliquots to prevent freeze-thaw cycles.

**Precautions**

PLEKHH1 Antibody (C-term) is for research use only and not for use in diagnostic or therapeutic procedures.

**PLEKHH1 Antibody (C-term) - Protein Information**

**Name** PLEKHH1

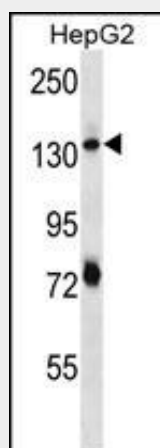
**Synonyms** KIAA1200

### **PLEKHH1 Antibody (C-term) - Protocols**

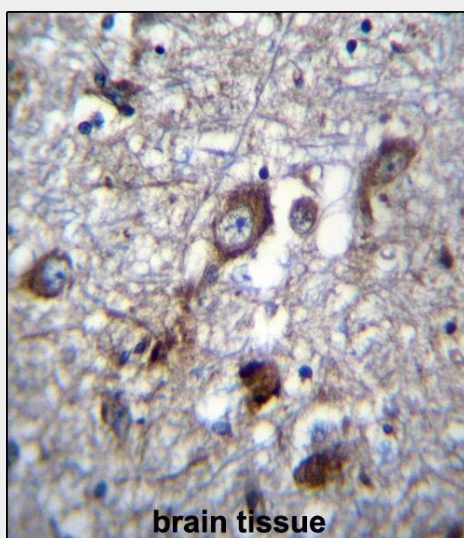
Provided below are standard protocols that you may find useful for product applications.

- [Western Blot](#)
- [Blocking Peptides](#)
- [Dot Blot](#)
- [Immunohistochemistry](#)
- [Immunofluorescence](#)
- [Immunoprecipitation](#)
- [Flow Cytometry](#)
- [Cell Culture](#)

### **PLEKHH1 Antibody (C-term) - Images**

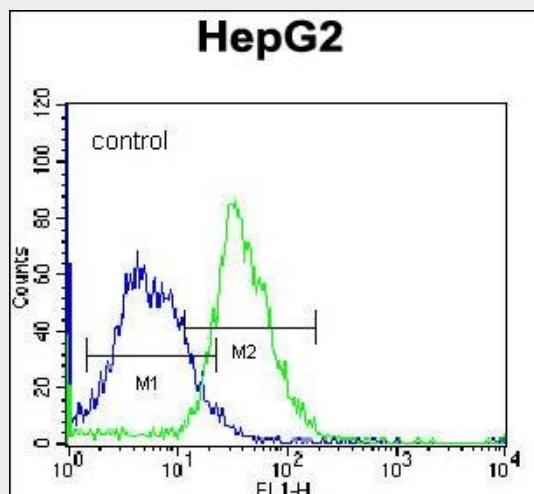


PLEKHH1 Antibody (C-term) (Cat. #AP12777b) western blot analysis in HepG2 cell line lysates (35ug/lane). This demonstrates the PLEKHH1 antibody detected the PLEKHH1 protein (arrow).



PLEKHH1 Antibody (C-term) (Cat. #AP12777b) immunohistochemistry analysis in formalin fixed

and paraffin embedded human brain tissue followed by peroxidase conjugation of the secondary antibody and DAB staining. This data demonstrates the use of PLEKHH1 Antibody (C-term) for immunohistochemistry. Clinical relevance has not been evaluated.



PLEKHH1 Antibody (C-term) (Cat. #AP12777b) flow cytometric analysis of K562 cells (right histogram) compared to a negative control cell (left histogram). FITC-conjugated donkey-anti-rabbit secondary antibodies were used for the analysis.

#### **PLEKHH1 Antibody (C-term) - References**

Kimura, K., et al. Genome Res. 16(1):55-65(2006)