

**DDX3Y Antibody (N-term)**  
**Affinity Purified Rabbit Polyclonal Antibody (Pab)**  
**Catalog # AP12787a****Specification**

---

**DDX3Y Antibody (N-term) - Product Information**

Application	WB,E
Primary Accession	<a href="#">O15523</a>
Other Accession	<a href="#">NP_001116137.1</a> , <a href="#">NP_004651.2</a>
Reactivity	Human
Host	Rabbit
Clonality	Polyclonal
Isotype	Rabbit IgG
Calculated MW	73154
Antigen Region	90-119

**DDX3Y Antibody (N-term) - Additional Information****Gene ID** 8653**Other Names**

ATP-dependent RNA helicase DDX3Y, DEAD box protein 3, Y-chromosomal, DDX3Y, DBY

**Target/Specificity**

This DDX3Y antibody is generated from rabbits immunized with a KLH conjugated synthetic peptide between 90-119 amino acids from the N-terminal region of human DDX3Y.

**Dilution**

WB~~1:1000

E~~Use at an assay dependent concentration.

**Format**

Purified polyclonal antibody supplied in PBS with 0.09% (W/V) sodium azide. This antibody is purified through a protein A column, followed by peptide affinity purification.

**Storage**

Maintain refrigerated at 2-8°C for up to 2 weeks. For long term storage store at -20°C in small aliquots to prevent freeze-thaw cycles.

**Precautions**

DDX3Y Antibody (N-term) is for research use only and not for use in diagnostic or therapeutic procedures.

**DDX3Y Antibody (N-term) - Protein Information****Name** DDX3Y**Function** Probable ATP-dependent RNA helicase. During immune response, may enhance IFNB1

expression via IRF3/IRF7 pathway (By similarity).

#### **Cellular Location**

Cytoplasm. Nucleus Note=Shuttles between the nucleus and the cytoplasm in an XPO1-dependent manner

#### **Tissue Location**

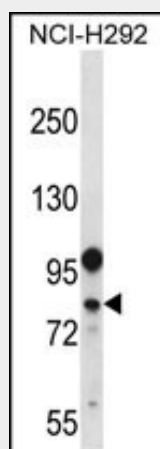
Widely expressed at the mRNA level, with highest levels in testis (PubMed:9381176). Testis-specific (at protein level) Expressed predominantly in spermatogonia, but occasionally detected in some pre-leptotene/leptotene spermatocytes (PubMed:15294876)

### **DDX3Y Antibody (N-term) - Protocols**

Provided below are standard protocols that you may find useful for product applications.

- [Western Blot](#)
- [Blocking Peptides](#)
- [Dot Blot](#)
- [Immunohistochemistry](#)
- [Immunofluorescence](#)
- [Immunoprecipitation](#)
- [Flow Cytometry](#)
- [Cell Culture](#)

### **DDX3Y Antibody (N-term) - Images**



DDX3Y Antibody (N-term) (Cat. #AP12787a) western blot analysis in NCI-H292 cell line lysates (35ug/lane). This demonstrates the DDX3Y antibody detected the DDX3Y protein (arrow).

### **DDX3Y Antibody (N-term) - Background**

DEAD box proteins, characterized by the conserved motif Asp-Glu-Ala-Asp (DEAD), are putative RNA helicases. They are implicated in a number of cellular processes involving alteration of RNA secondary structure such as translation initiation, nuclear and mitochondrial splicing, and ribosome and spliceosome assembly. Based on their distribution patterns, some members of this family are believed to be involved in embryogenesis, spermatogenesis, and cellular growth and division. This gene encodes a DEAD box protein, and it has a homolog on the X chromosome. The gene mutation causes

male infertility, Sertoli cell-only syndrome or severe hypospermatogenesis, suggesting that this gene plays a key role in the spermatogenic process. Alternatively spliced variants, encoding the same protein, have been identified.

#### **DDX3Y Antibody (N-term) - References**

Rosinski, K.V., et al. Blood 111(9):4817-4826(2008)  
Lardone, M.C., et al. Mol. Hum. Reprod. 13(10):705-712(2007)  
Pope, S.N., et al. J. Steroid Biochem. Mol. Biol. 94 (1-3), 203-208 (2005) :  
Rush, J., et al. Nat. Biotechnol. 23(1):94-101(2005)  
Ficarro, S.B., et al. Rapid Commun. Mass Spectrom. 19(1):57-71(2005)