

PAGE5 Antibody (C-term)
Affinity Purified Rabbit Polyclonal Antibody (Pab)
Catalog # AP12792b

Specification

PAGE5 Antibody (C-term) - Product Information

Application	WB, IHC-P,E
Primary Accession	O96GU1
Other Accession	NP_569734.2
Reactivity	Human
Host	Rabbit
Clonality	Polyclonal
Isotype	Rabbit IgG
Calculated MW	14046
Antigen Region	102-130

PAGE5 Antibody (C-term) - Additional Information

Gene ID 90737

Other Names

P antigen family member 5, PAGE-5, Cancer/testis antigen 161, CT161, G antigen family E member 1, Prostate-associated gene 5 protein, PAGE5, GAGEE1

Target/Specificity

This PAGE5 antibody is generated from rabbits immunized with a KLH conjugated synthetic peptide between 102-130 amino acids from the C-terminal region of human PAGE5.

Dilution

WB~~1:1000

IHC-P~~1:10~50

Format

Purified polyclonal antibody supplied in PBS with 0.09% (W/V) sodium azide. This antibody is purified through a protein A column, followed by peptide affinity purification.

Storage

Maintain refrigerated at 2-8°C for up to 2 weeks. For long term storage store at -20°C in small aliquots to prevent freeze-thaw cycles.

Precautions

PAGE5 Antibody (C-term) is for research use only and not for use in diagnostic or therapeutic procedures.

PAGE5 Antibody (C-term) - Protein Information

Name PAGE5

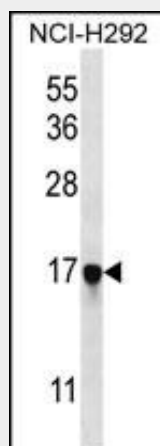
Synonyms GAGEE1

PAGE5 Antibody (C-term) - Protocols

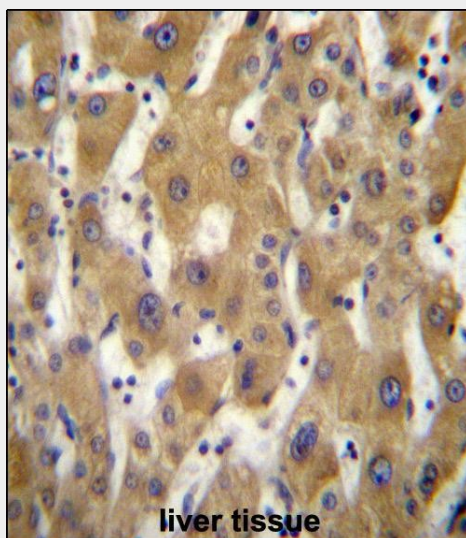
Provided below are standard protocols that you may find useful for product applications.

- [Western Blot](#)
- [Blocking Peptides](#)
- [Dot Blot](#)
- [Immunohistochemistry](#)
- [Immunofluorescence](#)
- [Immunoprecipitation](#)
- [Flow Cytometry](#)
- [Cell Culture](#)

PAGE5 Antibody (C-term) - Images



PAGE5 Antibody (C-term) (Cat. #AP12792b) western blot analysis in NCI-H292 cell line lysates (35ug/lane). This demonstrates the PAGE5 antibody detected the PAGE5 protein (arrow).



PAGE5 Antibody (C-term) (Cat. #AP12792b) immunohistochemistry analysis in formalin fixed and paraffin embedded human liver tissue followed by peroxidase conjugation of the secondary

antibody and DAB staining. This data demonstrates the use of PAGE5 Antibody (C-term) for immunohistochemistry. Clinical relevance has not been evaluated.

PAGE5 Antibody (C-term) - Background

This gene is a member of the GAGE family, which is expressed in a variety of tumors and in some fetal and reproductive tissues. The protein encoded by this gene shares a sequence similarity with other GAGE/PAGE proteins. It may also belong to a family of CT (cancer-testis) antigens. Multiple alternatively spliced transcript variants encoding distinct isoforms have been found for this gene, but the biological validity of some variants have not been determined.

PAGE5 Antibody (C-term) - References

Ross, M.T., et al. Nature 434(7031):325-337(2005)
Zendman, A.J., et al. Int. J. Cancer 99(3):361-369(2002)
Scanlan, M.J., et al. Int. J. Cancer 98(4):485-492(2002)