

RFX2 Antibody (C-term)
Affinity Purified Rabbit Polyclonal Antibody (Pab)
Catalog # AP12817b

Specification

RFX2 Antibody (C-term) - Product Information

Application	WB,E
Primary Accession	P48378
Other Accession	NP_000626.2 , NP_602309.1
Reactivity	Human
Host	Rabbit
Clonality	Polyclonal
Isotype	Rabbit IgG
Antigen Region	669-698

RFX2 Antibody (C-term) - Additional Information

Gene ID 5990

Other Names

DNA-binding protein RFX2, Regulatory factor X 2, RFX2

Target/Specificity

This RFX2 antibody is generated from rabbits immunized with a KLH conjugated synthetic peptide between 669-698 amino acids from the C-terminal region of human RFX2.

Dilution

WB~~1:1000

E~~Use at an assay dependent concentration.

Format

Purified polyclonal antibody supplied in PBS with 0.09% (W/V) sodium azide. This antibody is purified through a protein A column, followed by peptide affinity purification.

Storage

Maintain refrigerated at 2-8°C for up to 2 weeks. For long term storage store at -20°C in small aliquots to prevent freeze-thaw cycles.

Precautions

RFX2 Antibody (C-term) is for research use only and not for use in diagnostic or therapeutic procedures.

RFX2 Antibody (C-term) - Protein Information

Name RFX2

Function Transcription factor that acts as a key regulator of spermatogenesis. Acts by regulating expression of genes required for the haploid phase during spermiogenesis, such as genes required

for cilium assembly and function (By similarity). Recognizes and binds the X-box, a regulatory motif with DNA sequence 5'-GTNRCC(0-3N)RGYAAC-3' present on promoters (PubMed:[10330134](#)). Probably activates transcription of the testis-specific histone gene H1-6 (By similarity).

Cellular Location

Nucleus {ECO:0000250|UniProtKB:B2GV50, ECO:0000255|PROSITE-ProRule:PRU00858}.

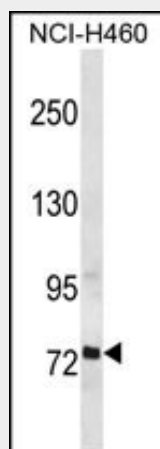
Cytoplasm {ECO:0000250|UniProtKB:B2GV50}. Note=Mainly expressed in the nucleus and at lower level in cytoplasm. {ECO:0000250|UniProtKB:B2GV50}

RFX2 Antibody (C-term) - Protocols

Provided below are standard protocols that you may find useful for product applications.

- [Western Blot](#)
- [Blocking Peptides](#)
- [Dot Blot](#)
- [Immunohistochemistry](#)
- [Immunofluorescence](#)
- [Immunoprecipitation](#)
- [Flow Cytometry](#)
- [Cell Culture](#)

RFX2 Antibody (C-term) - Images



RFX2 Antibody (C-term) (Cat. #AP12817b) western blot analysis in NCI-H460 cell line lysates (35ug/lane). This demonstrates the RFX2 antibody detected the RFX2 protein (arrow).

RFX2 Antibody (C-term) - Background

This gene is a member of the regulatory factor X gene family, which encodes transcription factors that contain a highly-conserved winged helix DNA binding domain. The protein encoded by this gene is structurally related to regulatory factors X1, X3, X4, and X5. It is a transcriptional activator that can bind DNA as a monomer or as a heterodimer with other RFX family members. This protein can bind to cis elements in the promoter of the IL-5 receptor alpha gene. Two transcript variants encoding different isoforms have been described for this gene, and both variants utilize alternative polyadenylation sites.

RFX2 Antibody (C-term) - References

Purvis, T.L., et al. Gene 460 (1-2), 20-29 (2010) :
Bailey, S.D., et al. Diabetes Care (2010) In press :
Talmud, P.J., et al. Am. J. Hum. Genet. 85(5):628-642(2009)
Horvath, G.C., et al. Biol. Reprod. 71(5):1551-1559(2004)
Maijgren, S., et al. Arch. Dermatol. Res. 295(11):482-489(2004)