

MATN1 Antibody (C-term)
Affinity Purified Rabbit Polyclonal Antibody (Pab)
Catalog # AP12822b

Specification

MATN1 Antibody (C-term) - Product Information

Application	IHC-P, WB,E
Primary Accession	P21941
Other Accession	NP_002370.1
Reactivity	Human
Host	Rabbit
Clonality	Polyclonal
Isotype	Rabbit IgG
Calculated MW	53701
Antigen Region	376-405

MATN1 Antibody (C-term) - Additional Information

Gene ID 4146

Other Names

Cartilage matrix protein, Matrilin-1, MATN1, CMP, CRTM

Target/Specificity

This MATN1 antibody is generated from rabbits immunized with a KLH conjugated synthetic peptide between 376-405 amino acids from the C-terminal region of human MATN1.

Dilution

IHC-P~~1:10~50

WB~~1:1000

E~~Use at an assay dependent concentration.

Format

Purified polyclonal antibody supplied in PBS with 0.09% (W/V) sodium azide. This antibody is purified through a protein A column, followed by peptide affinity purification.

Storage

Maintain refrigerated at 2-8°C for up to 2 weeks. For long term storage store at -20°C in small aliquots to prevent freeze-thaw cycles.

Precautions

MATN1 Antibody (C-term) is for research use only and not for use in diagnostic or therapeutic procedures.

MATN1 Antibody (C-term) - Protein Information

Name MATN1 ([HGNC:6907](#))

Function A major component of the extracellular matrix of non- articular cartilage (By similarity). Binds to type 2 collagens and forms long concatenated protein networks as part of the extracellular matrix (By similarity). Required for the network-like organization and bundling of collagen fibrils surrounding chondrocytes in the zones of maturation and hypertrophy (By similarity). Required for mechanotransduction and adaption to mechanical loading in cartilage chondrocytes, resulting in an increase in expression of the extracellular matrix components ACAN and COL2A1 (By similarity). Acts as a moderator of angiogenesis in response to injury (By similarity).

Cellular Location

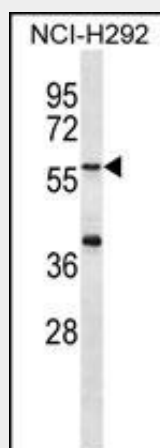
Secreted, extracellular space, extracellular matrix {ECO:0000250|UniProtKB:P05099}

MATN1 Antibody (C-term) - Protocols

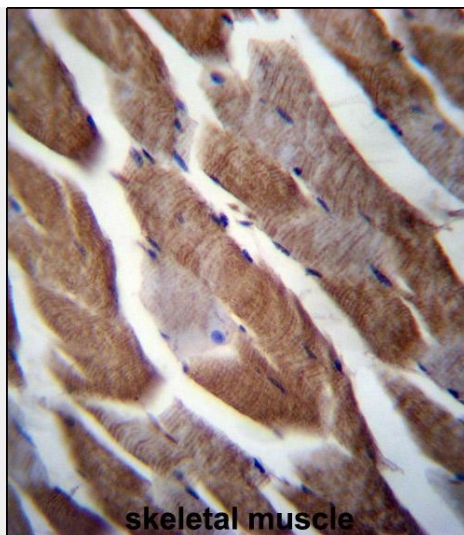
Provided below are standard protocols that you may find useful for product applications.

- [Western Blot](#)
- [Blocking Peptides](#)
- [Dot Blot](#)
- [Immunohistochemistry](#)
- [Immunofluorescence](#)
- [Immunoprecipitation](#)
- [Flow Cytometry](#)
- [Cell Culture](#)

MATN1 Antibody (C-term) - Images



MATN1 Antibody (C-term) (Cat. #AP12822b) western blot analysis in NCI-H292 cell line lysates (35ug/lane). This demonstrates the MATN1 antibody detected the MATN1 protein (arrow).



MATN1 Antibody (C-term) (Cat. #AP12822b) immunohistochemistry analysis in formalin fixed and paraffin embedded human skeletal muscle followed by peroxidase conjugation of the secondary antibody and DAB staining. This data demonstrates the use of MATN1 Antibody (C-term) for immunohistochemistry. Clinical relevance has not been evaluated.

MATN1 Antibody (C-term) - Background

This gene encodes a member of von Willebrand factor A domain containing protein family. This family of proteins are thought to be involved in the formation of filamentous networks in the extracellular matrices of various tissues. Mutations of this gene have been associated with variety of inherited chondrodysplasias.

MATN1 Antibody (C-term) - References

Jang, J.Y., et al. J. Dent. Res. 89(11):1203-1207(2010)
Fresquet, M., et al. J. Biol. Chem. 285(44):34048-34061(2010)
Wheeler, H.E., et al. PLoS Genet. 5 (10), E1000685 (2009) :
Chen, Z.J., et al. Zhonghua Wai Ke Za Zhi 47(17):1332-1335(2009)
Caporaso, N., et al. PLoS ONE 4 (2), E4653 (2009) :