

**PHACTR3 Antibody (N-term)**  
**Affinity Purified Rabbit Polyclonal Antibody (Pab)**  
**Catalog # AP12836A**

**Specification**

---

**PHACTR3 Antibody (N-term) - Product Information**

Application	IHC-P, WB,E
Primary Accession	<a href="#">O96KR7</a>
Other Accession	<a href="#">NP_899067.1</a>
Reactivity	Human
Host	Rabbit
Clonality	Polyclonal
Isotype	Rabbit IgG
Calculated MW	62552
Antigen Region	17-46

**PHACTR3 Antibody (N-term) - Additional Information**

**Gene ID** 116154

**Other Names**

Phosphatase and actin regulator 3, Scaffold-associated PP1-inhibiting protein, Scapinin, PHACTR3, C20orf101, SCAPIN1

**Target/Specificity**

This PHACTR3 antibody is generated from rabbits immunized with a KLH conjugated synthetic peptide between 17-46 amino acids from the N-terminal region of human PHACTR3.

**Dilution**

IHC-P~~1:10~50

WB~~1:1000

E~~Use at an assay dependent concentration.

**Format**

Purified polyclonal antibody supplied in PBS with 0.09% (W/V) sodium azide. This antibody is purified through a protein A column, followed by peptide affinity purification.

**Storage**

Maintain refrigerated at 2-8°C for up to 2 weeks. For long term storage store at -20°C in small aliquots to prevent freeze-thaw cycles.

**Precautions**

PHACTR3 Antibody (N-term) is for research use only and not for use in diagnostic or therapeutic procedures.

**PHACTR3 Antibody (N-term) - Protein Information**

**Name** PHACTR3

**Synonyms** C20orf101, SCAPIN1

**Cellular Location**

Nucleus matrix. Note=Localized to the nuclear matrix-intermediate filament scaffold. Isoform 2 is also found in some cytoplasmic extensions

**Tissue Location**

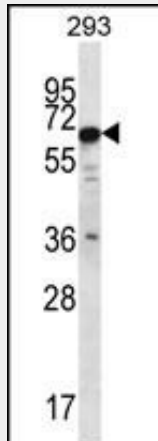
Abundantly expressed in brain. Also found in several tumors such as lung carcinomas, nervous tumors and HL-60 leukemia cells. Isoform 3 is the major form in U-937, GOTO and HL-60 leukemia cells

**PHACTR3 Antibody (N-term) - Protocols**

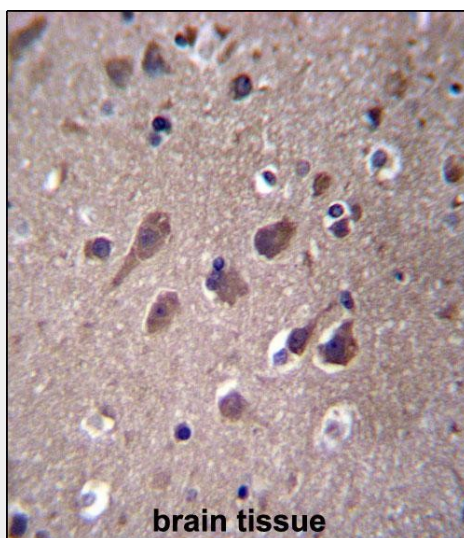
Provided below are standard protocols that you may find useful for product applications.

- [Western Blot](#)
- [Blocking Peptides](#)
- [Dot Blot](#)
- [Immunohistochemistry](#)
- [Immunofluorescence](#)
- [Immunoprecipitation](#)
- [Flow Cytometry](#)
- [Cell Culture](#)

**PHACTR3 Antibody (N-term) - Images**



PHACTR3 Antibody (N-term) (Cat. #AP12836a) western blot analysis in 293 cell line lysates (35ug/lane). This demonstrates the PHACTR3 antibody detected the PHACTR3 protein (arrow).



PHACTR3 Antibody (N-term) (Cat. #AP12836a) immunohistochemistry analysis in formalin fixed and paraffin embedded human brain tissue followed by peroxidase conjugation of the secondary antibody and DAB staining. This data demonstrates the use of PHACTR3 Antibody (N-term) for immunohistochemistry. Clinical relevance has not been evaluated.

#### **PHACTR3 Antibody (N-term) - Background**

The protein encoded by this gene is associated with the nuclear scaffold in proliferating cells. It was found to bind to the catalytic subunit of protein phosphatase-1 (PP1) and inhibit PP1 activity, suggesting that this protein may function as a regulatory subunit of PP1. Alternative splicing at this locus results in several transcript variants encoding different isoforms.

#### **PHACTR3 Antibody (N-term) - References**

Bailey, S.D., et al. Diabetes Care 33(10):2250-2253(2010)  
Rose, J.E., et al. Mol. Med. 16 (7-8), 247-253 (2010) :  
Bankovic, J., et al. Lung Cancer 67(2):151-159(2010)  
Talmud, P.J., et al. Am. J. Hum. Genet. 85(5):628-642(2009)  
Sagara, J., et al. PLoS ONE 4 (1), E4247 (2009) :