

**HEPACAM Antibody (C-term)**  
**Affinity Purified Rabbit Polyclonal Antibody (Pab)**  
**Catalog # AP12843b****Specification**

---

**HEPACAM Antibody (C-term) - Product Information**

Application	WB,E
Primary Accession	<a href="#">Q14CZ8</a>
Other Accession	<a href="#">NP_689935.2</a>
Reactivity	Human
Host	Rabbit
Clonality	Polyclonal
Isotype	Rabbit IgG
Calculated MW	46026
Antigen Region	298-327

**HEPACAM Antibody (C-term) - Additional Information****Gene ID** 220296**Other Names**

Hepatocyte cell adhesion molecule, Protein hepaCAM, HEPACAM {ECO:0000312|EMBL:AAI135631}

**Target/Specificity**

This HEPACAM antibody is generated from rabbits immunized with a KLH conjugated synthetic peptide between 298-327 amino acids from the C-terminal region of human HEPACAM.

**Dilution**

WB~~1:1000

E~~Use at an assay dependent concentration.

**Format**

Purified polyclonal antibody supplied in PBS with 0.09% (W/V) sodium azide. This antibody is purified through a protein A column, followed by peptide affinity purification.

**Storage**

Maintain refrigerated at 2-8°C for up to 2 weeks. For long term storage store at -20°C in small aliquots to prevent freeze-thaw cycles.

**Precautions**

HEPACAM Antibody (C-term) is for research use only and not for use in diagnostic or therapeutic procedures.

**HEPACAM Antibody (C-term) - Protein Information****Name** HEPACAM {ECO:0000303|PubMed:15885354, ECO:0000312|HGNC:HGNC:26361}**Function** Involved in regulating cell motility and cell-matrix interactions. May inhibit cell growth

through suppression of cell proliferation (PubMed:[15885354](#), PubMed:[15917256](#)). In glia, associates and targets CLCN2 at astrocytic processes and myelinated fiber tracts where it may regulate transcellular chloride flux involved in neuron excitability (PubMed:[22405205](#)).

#### Cellular Location

Cytoplasm. Cell membrane; Single-pass type I membrane protein; Cytoplasmic side.

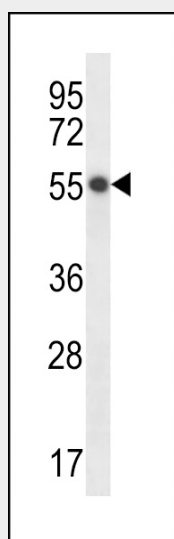
Note=Colocalizes with CLCN2 at astrocyte end-foot in contact with brain capillaries and other glial cells (By similarity). In MCF-7 breast carcinoma and hepatic Hep 3B2.1-7 and Hep- G2 cell lines, localization of HEPACAM is cell density-dependent. In well spread cells, localized to punctate structures in the perinuclear membrane, cytoplasm, and at cell surface of protusions. In confluent cells, localized predominantly to the cytoplasmic membrane, particularly in areas of cell-cell contacts. Colocalizes with CDH1 {ECO:0000250|UniProtKB:Q640R3}

#### HEPACAM Antibody (C-term) - Protocols

Provided below are standard protocols that you may find useful for product applications.

- [Western Blot](#)
- [Blocking Peptides](#)
- [Dot Blot](#)
- [Immunohistochemistry](#)
- [Immunofluorescence](#)
- [Immunoprecipitation](#)
- [Flow Cytometry](#)
- [Cell Culture](#)

#### HEPACAM Antibody (C-term) - Images



HEPACAM Antibody (C-term) (Cat. #AP12843b) western blot analysis in HepG2 cell line lysates (35ug/lane). This demonstrates the HEPACAM antibody detected the HEPACAM protein (arrow).

#### HEPACAM Antibody (C-term) - Background

HEPACAM is involved in regulating cell motility and cell-matrix interactions. May inhibit cell growth through suppression of cell proliferation.

#### HEPACAM Antibody (C-term) - References

Yang, S., et al. World J Urol 28(4):473-478(2010)  
Zhang, T., et al. Int. J. Oncol. 37(1):155-165(2010)  
Davila, S., et al. Genes Immun. 11(3):232-238(2010)  
He, Y., et al. BMC Cancer 10, 83 (2010) :  
Lee, L.H., et al. J. Cell. Biochem. 107(6):1129-1138(2009)