

**SULT1A3/SULT1A4 Antibody (N-term)**  
**Affinity Purified Rabbit Polyclonal Antibody (Pab)**  
**Catalog # AP12849a**

**Specification**

---

**SULT1A3/SULT1A4 Antibody (N-term) - Product Information**

Application	IHC-P, WB,E
Primary Accession	<a href="#">P50224</a>
Other Accession	<a href="#">PODMN0</a> , <a href="#">PODMM9</a> , <a href="#">NP_001017390.1</a> , <a href="#">NP_808220.1</a>
Reactivity	Human
Host	Rabbit
Clonality	Polyclonal
Isotype	Rabbit IgG
Antigen Region	71-99

**SULT1A3/SULT1A4 Antibody (N-term) - Additional Information**

**Other Names**

SULT1A3; STM; Sulfotransferase 1A3/1A4; Aryl sulfotransferase 1A3/1A4; Catecholamine-sulfating phenol sulfotransferase; HAST3; M-PST; Monoamine-sulfating phenol sulfotransferase; Placental estrogen sulfotransferase; Sulfotransferase, monoamine-preferring; Thermolabile phenol sulfotransferase

**Target/Specificity**

This SULT1A3/SULT1A4 antibody is generated from rabbits immunized with a KLH conjugated synthetic peptide between 71-99 amino acids from the N-terminal region of human SULT1A3/SULT1A4.

**Dilution**

IHC-P~~1:10~50  
WB~~1:1000  
E~~Use at an assay dependent concentration.

**Format**

Purified polyclonal antibody supplied in PBS with 0.09% (W/V) sodium azide. This antibody is purified through a protein A column, followed by peptide affinity purification.

**Storage**

Maintain refrigerated at 2-8°C for up to 2 weeks. For long term storage store at -20°C in small aliquots to prevent freeze-thaw cycles.

**Precautions**

SULT1A3/SULT1A4 Antibody (N-term) is for research use only and not for use in diagnostic or therapeutic procedures.

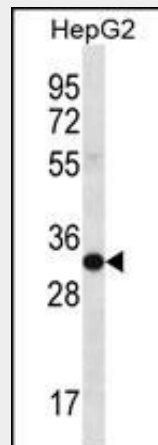
**SULT1A3/SULT1A4 Antibody (N-term) - Protein Information**

## SULT1A3/SULT1A4 Antibody (N-term) - Protocols

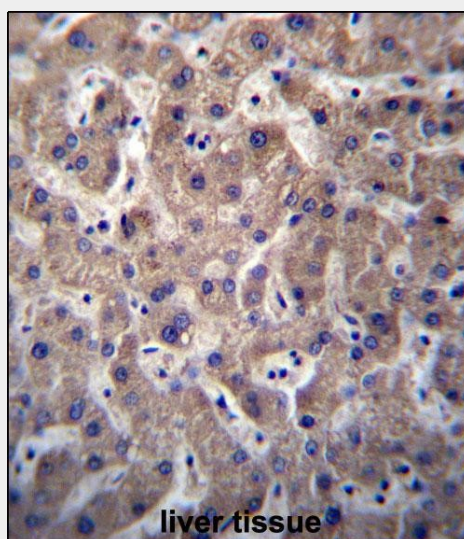
Provided below are standard protocols that you may find useful for product applications.

- [Western Blot](#)
- [Blocking Peptides](#)
- [Dot Blot](#)
- [Immunohistochemistry](#)
- [Immunofluorescence](#)
- [Immunoprecipitation](#)
- [Flow Cytometry](#)
- [Cell Culture](#)

## SULT1A3/SULT1A4 Antibody (N-term) - Images



SULT1A3/SULT1A4 Antibody (N-term) (Cat. #AP12849a) western blot analysis in HepG2 cell line lysates (35ug/lane). This demonstrates the SULT1A3/SULT1A4 antibody detected the SULT1A3/SULT1A4 protein (arrow).



SULT1A3/SULT1A4 Antibody (N-term) (Cat. #AP12849a) immunohistochemistry analysis in formalin fixed and paraffin embedded human liver tissue followed by peroxidase conjugation of the secondary antibody and DAB staining. This data demonstrates the use of SULT1A3/SULT1A4

Antibody (N-term) for immunohistochemistry. Clinical relevance has not been evaluated.