

**SEC62 Antibody (N-term)**  
**Affinity Purified Rabbit Polyclonal Antibody (Pab)**  
**Catalog # AP12850a****Specification**

---

**SEC62 Antibody (N-term) - Product Information**

Application	WB, IHC-P,E
Primary Accession	<a href="#">Q99442</a>
Other Accession	<a href="#">Q8BU14</a> , <a href="#">NP_003253.1</a>
Reactivity	Human
Predicted	Mouse
Host	Rabbit
Clonality	Polyclonal
Isotype	Rabbit IgG
Calculated MW	45862
Antigen Region	1-30

**SEC62 Antibody (N-term) - Additional Information****Gene ID** 7095**Other Names**

Translocation protein SEC62, Translocation protein 1, TP-1, hTP-1, SEC62, TLOC1

**Target/Specificity**

This SEC62 antibody is generated from rabbits immunized with a KLH conjugated synthetic peptide between 1-30 amino acids from the N-terminal region of human SEC62.

**Dilution**

WB~~1:1000

IHC-P~~1:10~50

**Format**

Purified polyclonal antibody supplied in PBS with 0.09% (W/V) sodium azide. This antibody is purified through a protein A column, followed by peptide affinity purification.

**Storage**

Maintain refrigerated at 2-8°C for up to 2 weeks. For long term storage store at -20°C in small aliquots to prevent freeze-thaw cycles.

**Precautions**

SEC62 Antibody (N-term) is for research use only and not for use in diagnostic or therapeutic procedures.

**SEC62 Antibody (N-term) - Protein Information****Name** SEC62

## Synonyms TLOC1

**Function** Mediates post-translational transport of precursor polypeptides across endoplasmic reticulum (ER). Proposed to act as a targeting receptor for small presecretory proteins containing short and apolar signal peptides. Targets and properly positions newly synthesized presecretory proteins into the SEC61 channel-forming translocon complex, triggering channel opening for polypeptide translocation to the ER lumen.

## Cellular Location

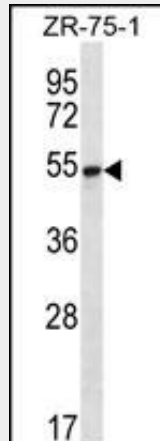
Endoplasmic reticulum membrane; Multi-pass membrane protein

## SEC62 Antibody (N-term) - Protocols

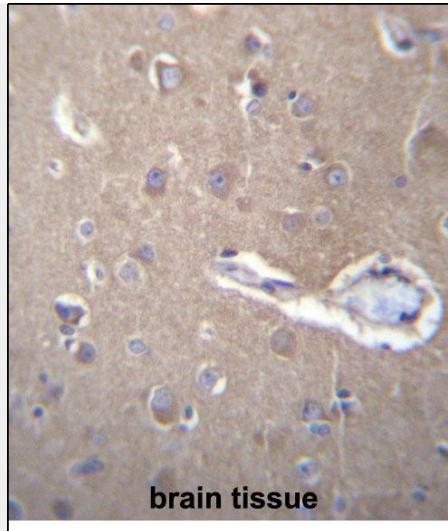
Provided below are standard protocols that you may find useful for product applications.

- [Western Blot](#)
- [Blocking Peptides](#)
- [Dot Blot](#)
- [Immunohistochemistry](#)
- [Immunofluorescence](#)
- [Immunoprecipitation](#)
- [Flow Cytometry](#)
- [Cell Culture](#)

## SEC62 Antibody (N-term) - Images



SEC62 Antibody (N-term) (Cat. #AP12850a) western blot analysis in ZR-75-1 cell line lysates (35ug/lane). This demonstrates the SEC62 antibody detected the SEC62 protein (arrow).



SEC62 Antibody (N-term) (Cat. #AP12850a) immunohistochemistry analysis in formalin fixed and paraffin embedded human brain tissue followed by peroxidase conjugation of the secondary antibody and DAB staining. This data demonstrates the use of SEC62 Antibody (N-term) for immunohistochemistry. Clinical relevance has not been evaluated.

#### **SEC62 Antibody (N-term) - Background**

The Sec61 complex is the central component of the protein translocation apparatus of the endoplasmic reticulum (ER) membrane. The protein encoded by this gene and SEC63 protein are found to be associated with ribosome-free SEC61 complex. It is speculated that Sec61-Sec62-Sec63 may perform post-translational protein translocation into the ER. The Sec61-Sec62-Sec63 complex might also perform the backward transport of ER proteins that are subject to the ubiquitin-proteasome-dependent degradation pathway. The encoded protein is an integral membrane protein located in the rough ER.

#### **SEC62 Antibody (N-term) - References**

Olsen, J.V., et al. Cell 127(3):635-648(2006)  
Olsen, J.V., et al. Cell 127(3):635-648(2006)  
Lim, J., et al. Cell 125(4):801-814(2006)  
Jung, V., et al. Mol. Cancer Res. 4(3):169-176(2006)  
Meyer, H.A., et al. J. Biol. Chem. 275(19):14550-14557(2000)