

**TBC1D22A Antibody (C-term)**  
**Affinity Purified Rabbit Polyclonal Antibody (Pab)**  
**Catalog # AP12853B****Specification**

---

**TBC1D22A Antibody (C-term) - Product Information**

Application	WB, IHC-P,E
Primary Accession	<a href="#">Q8WUA7</a>
Other Accession	<a href="#">Q95KI1</a> , <a href="#">NP_055161.1</a>
Reactivity	Human
Predicted	Monkey
Host	Rabbit
Clonality	Polyclonal
Isotype	Rabbit IgG
Calculated MW	59121
Antigen Region	447-476

**TBC1D22A Antibody (C-term) - Additional Information****Gene ID** 25771**Other Names**

TBC1 domain family member 22A, TBC1D22A, C22orf4

**Target/Specificity**

This TBC1D22A antibody is generated from rabbits immunized with a KLH conjugated synthetic peptide between 447-476 amino acids from the C-terminal region of human TBC1D22A.

**Dilution**

WB~~1:1000

IHC-P~~1:10~50

**Format**

Purified polyclonal antibody supplied in PBS with 0.09% (W/V) sodium azide. This antibody is purified through a protein A column, followed by peptide affinity purification.

**Storage**

Maintain refrigerated at 2-8°C for up to 2 weeks. For long term storage store at -20°C in small aliquots to prevent freeze-thaw cycles.

**Precautions**

TBC1D22A Antibody (C-term) is for research use only and not for use in diagnostic or therapeutic procedures.

**TBC1D22A Antibody (C-term) - Protein Information****Name** TBC1D22A

**Synonyms** C22orf4

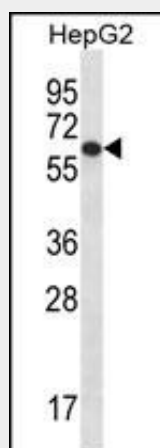
**Function** May act as a GTPase-activating protein for Rab family protein(s).

### TBC1D22A Antibody (C-term) - Protocols

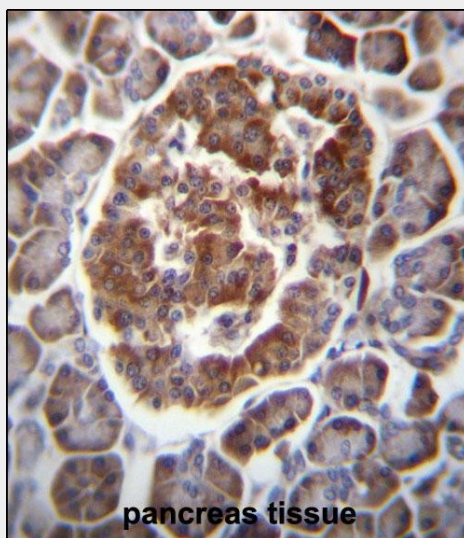
Provided below are standard protocols that you may find useful for product applications.

- [Western Blot](#)
- [Blocking Peptides](#)
- [Dot Blot](#)
- [Immunohistochemistry](#)
- [Immunofluorescence](#)
- [Immunoprecipitation](#)
- [Flow Cytometry](#)
- [Cell Culture](#)

### TBC1D22A Antibody (C-term) - Images



TBC1D22A Antibody (C-term) (Cat. #AP12853b) western blot analysis in HepG2 cell line lysates (35ug/lane). This demonstrates the TBC1D22A antibody detected the TBC1D22A protein (arrow).



TBC1D22A Antibody (C-term) (Cat. #AP12853b) immunohistochemistry analysis in formalin fixed

and paraffin embedded human pancreas tissue followed by peroxidase conjugation of the secondary antibody and DAB staining. This data demonstrates the use of TBC1D22A Antibody (C-term) for immunohistochemistry. Clinical relevance has not been evaluated.

**TBC1D22A Antibody (C-term) - Background**

TBC1D22A may act as a GTPase-activating protein for Rab family protein(s) (By similarity).

**TBC1D22A Antibody (C-term) - References**

Ishibashi, K., et al. Genes Cells 14(1):41-52(2009)  
Tempel, W., et al. Proteins 71(1):497-502(2008)  
Olsen, J.V., et al. Cell 127(3):635-648(2006)