

SCHIP1 Antibody (Center)
Affinity Purified Rabbit Polyclonal Antibody (Pab)
Catalog # AP12855c**Specification**

SCHIP1 Antibody (Center) - Product Information

Application	FC, IHC-P, WB,E
Primary Accession	O9P0W5
Other Accession	NP_055390.1
Reactivity	Human
Host	Rabbit
Clonality	Polyclonal
Isotype	Rabbit IgG
Antigen Region	90-118

SCHIP1 Antibody (Center) - Additional Information**Other Names**

Schwannomin-interacting protein 1, SCHIP-1, SCHIP1

Target/Specificity

This SCHIP1 antibody is generated from rabbits immunized with a KLH conjugated synthetic peptide between 90-118 amino acids from the Central region of human SCHIP1.

Dilution

FC~~1:10~50

IHC-P~~1:10~50

WB~~1:1000

E~~Use at an assay dependent concentration.

Format

Purified polyclonal antibody supplied in PBS with 0.09% (W/V) sodium azide. This antibody is purified through a protein A column, followed by peptide affinity purification.

Storage

Maintain refrigerated at 2-8°C for up to 2 weeks. For long term storage store at -20°C in small aliquots to prevent freeze-thaw cycles.

Precautions

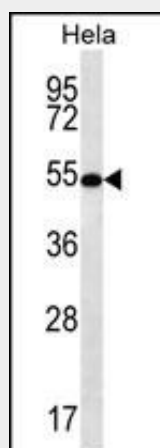
SCHIP1 Antibody (Center) is for research use only and not for use in diagnostic or therapeutic procedures.

SCHIP1 Antibody (Center) - Protein Information**SCHIP1 Antibody (Center) - Protocols**

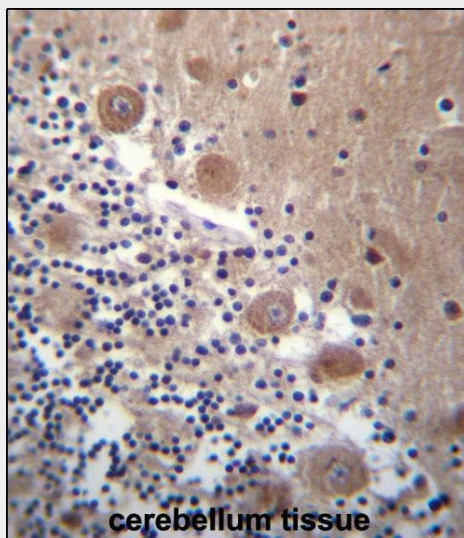
Provided below are standard protocols that you may find useful for product applications.

- [Western Blot](#)
- [Blocking Peptides](#)
- [Dot Blot](#)
- [Immunohistochemistry](#)
- [Immunofluorescence](#)
- [Immunoprecipitation](#)
- [Flow Cytometry](#)
- [Cell Culture](#)

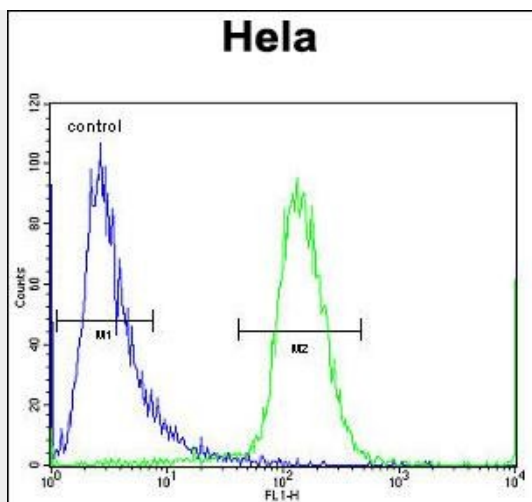
SCHIP1 Antibody (Center) - Images



SCHIP1 Antibody (Center) (Cat. #AP12855c) western blot analysis in HeLa cell line lysates (35ug/lane). This demonstrates the SCHIP1 antibody detected the SCHIP1 protein (arrow).



SCHIP1 Antibody (Center) (Cat. #AP12855c) immunohistochemistry analysis in formalin fixed and paraffin embedded human cerebellum tissue followed by peroxidase conjugation of the secondary antibody and DAB staining. This data demonstrates the use of SCHIP1 Antibody (Center) for immunohistochemistry. Clinical relevance has not been evaluated.



SCHIP1 Antibody (Center) (Cat. #AP12855c) flow cytometric analysis of HeLa cells (right histogram) compared to a negative control cell (left histogram). FITC-conjugated goat-anti-rabbit secondary antibodies were used for the analysis.

SCHIP1 Antibody (Center) - Background

SCHIP1 is a novel coiled-coil protein that specifically associates with schwannomin in vitro and in vivo. Within its coiled-coil region, this protein is homologous to human FEZ proteins and the related *Caenorhabditis elegans* gene product UNC-76.

SCHIP1 Antibody (Center) - References

Bailey, S.D., et al. *Diabetes Care* 33(10):2250-2253(2010)
Rose, J.E., et al. *Mol. Med.* 16 (7-8), 247-253 (2010) :
Dubois, P.C., et al. *Nat. Genet.* 42(4):295-302(2010)
Talmud, P.J., et al. *Am. J. Hum. Genet.* 85(5):628-642(2009)
De Jager, P.L., et al. *Nat. Genet.* 41(7):776-782(2009)