

**NUP35 Antibody (C-term)**  
**Affinity Purified Rabbit Polyclonal Antibody (Pab)**  
**Catalog # AP12864b**

**Specification**

---

**NUP35 Antibody (C-term) - Product Information**

Application	FC, WB,E
Primary Accession	<a href="#">Q8NFH5</a>
Other Accession	<a href="#">NP_612142.2</a>
Reactivity	Human
Host	Rabbit
Clonality	Polyclonal
Isotype	Rabbit IgG
Calculated MW	34774
Antigen Region	289-318

**NUP35 Antibody (C-term) - Additional Information**

**Gene ID** 129401

**Other Names**

Nucleoporin NUP53, 35 kDa nucleoporin, Mitotic phosphoprotein 44, MP-44, Nuclear pore complex protein Nup53, Nucleoporin Nup35, NUP35, MP44, NUP53

**Target/Specificity**

This NUP35 antibody is generated from rabbits immunized with a KLH conjugated synthetic peptide between 289-318 amino acids from the C-terminal region of human NUP35.

**Dilution**

FC~~1:10~50

WB~~1:1000

E~~Use at an assay dependent concentration.

**Format**

Purified polyclonal antibody supplied in PBS with 0.09% (W/V) sodium azide. This antibody is purified through a protein A column, followed by peptide affinity purification.

**Storage**

Maintain refrigerated at 2-8°C for up to 2 weeks. For long term storage store at -20°C in small aliquots to prevent freeze-thaw cycles.

**Precautions**

NUP35 Antibody (C-term) is for research use only and not for use in diagnostic or therapeutic procedures.

**NUP35 Antibody (C-term) - Protein Information**

**Name** NUP35

**Synonyms** MP44, NUP53

**Function** Functions as a component of the nuclear pore complex (NPC). NPC components, collectively referred to as nucleoporins (NUPs), can play the role of both NPC structural components and of docking or interaction partners for transiently associated nuclear transport factors. May play a role in the association of MAD1 with the NPC.

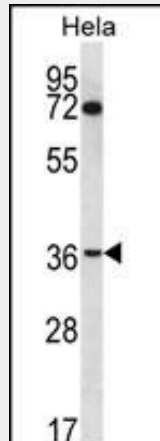
**Cellular Location**

Nucleus, nuclear pore complex. Nucleus membrane; Peripheral membrane protein. Note=Tightly associated with the nuclear membrane and lamina.

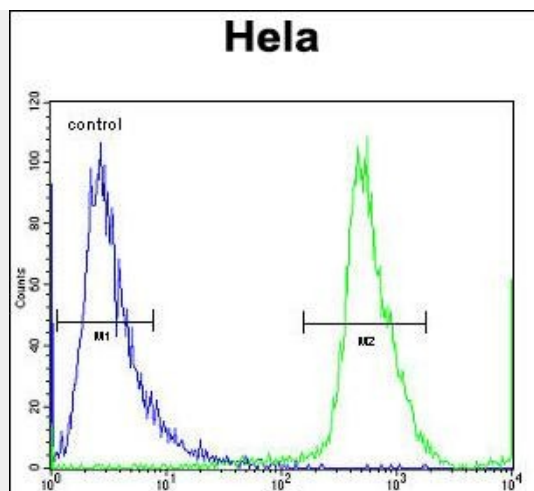
**NUP35 Antibody (C-term) - Protocols**

Provided below are standard protocols that you may find useful for product applications.

- [Western Blot](#)
- [Blocking Peptides](#)
- [Dot Blot](#)
- [Immunohistochemistry](#)
- [Immunofluorescence](#)
- [Immunoprecipitation](#)
- [Flow Cytometry](#)
- [Cell Culture](#)

**NUP35 Antibody (C-term) - Images**

NUP35 Antibody (C-term) (Cat. #AP12864b) western blot analysis in HeLa cell line lysates (35ug/lane). This demonstrates the NUP35 antibody detected the NUP35 protein (arrow).



NUP35 Antibody (C-term) (Cat. #AP12864b) flow cytometric analysis of HeLa cells (right histogram) compared to a negative control cell (left histogram). FITC-conjugated goat-anti-rabbit secondary antibodies were used for the analysis.

#### **NUP35 Antibody (C-term) - Background**

This gene encodes a member of the nucleoporin family. The protein is localized to the nuclear rim and is part of the nuclear pore complex (NPC). All molecules entering or leaving the nucleus either diffuse through or are actively transported by the NPC.

#### **NUP35 Antibody (C-term) - References**

Ichikawa, S., et al. J. Bone Miner. Res. 25(8):1821-1829(2010)  
Hawryluk-Gara, L.A., et al. Mol. Biol. Cell 19(4):1753-1762(2008)  
Sugiyama, N., et al. Mol. Cell Proteomics 6(6):1103-1109(2007)  
Lamesch, P., et al. Genomics 89(3):307-315(2007)  
Olsen, J.V., et al. Cell 127(3):635-648(2006)