

**RNF180 Antibody (C-term)**  
**Affinity Purified Rabbit Polyclonal Antibody (Pab)**  
**Catalog # AP12870c****Specification**

---

**RNF180 Antibody (C-term) - Product Information**

|                   |  |
|-------------------|--|
| Application       | IHC-P, WB,E  |
| Primary Accession | <a href="#">Q86T96</a>                                       |
| Other Accession   | <a href="#">NP_001107033.1</a> , <a href="#">NP_848627.1</a> |
| Reactivity        | Human  |
| Host              | Rabbit   |
| Clonality         | Polyclonal   |
| Isotype           | Rabbit IgG   |
| Calculated MW     | 68254  |
| Antigen Region    | 401-430  |

**RNF180 Antibody (C-term) - Additional Information****Gene ID** 285671**Other Names**

E3 ubiquitin-protein ligase RNF180, 632-, RING finger protein 180, RNF180

**Target/Specificity**

This RNF180 antibody is generated from rabbits immunized with a KLH conjugated synthetic peptide between 401-430 amino acids from the C-terminal region of human RNF180.

**Dilution**

IHC-P~~1:10~50

WB~~1:1000

E~~Use at an assay dependent concentration.

**Format**

Purified polyclonal antibody supplied in PBS with 0.09% (W/V) sodium azide. This antibody is purified through a protein A column, followed by peptide affinity purification.

**Storage**

Maintain refrigerated at 2-8°C for up to 2 weeks. For long term storage store at -20°C in small aliquots to prevent freeze-thaw cycles.

**Precautions**

RNF180 Antibody (C-term) is for research use only and not for use in diagnostic or therapeutic procedures.

**RNF180 Antibody (C-term) - Protein Information****Name** RNF180

**Function** E3 ubiquitin-protein ligase which promotes polyubiquitination and degradation by the proteasome pathway of ZIC2.

**Cellular Location**

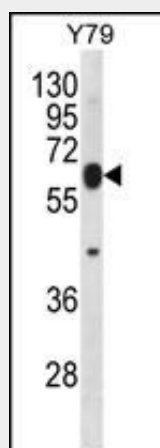
Endoplasmic reticulum membrane; Single-pass membrane protein. Nucleus envelope  
{ECO:0000250|UniProtKB:Q3U827}

**RNF180 Antibody (C-term) - Protocols**

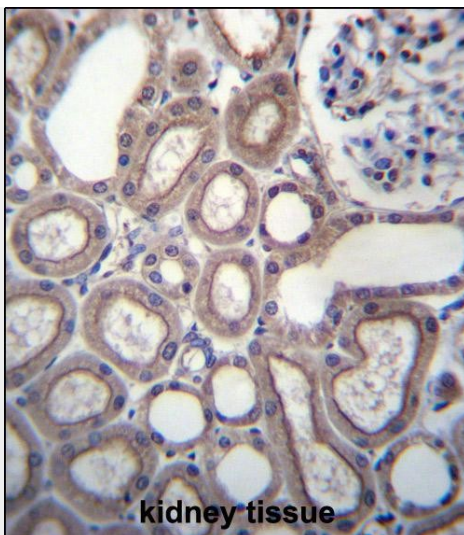
Provided below are standard protocols that you may find useful for product applications.

- [Western Blot](#)
- [Blocking Peptides](#)
- [Dot Blot](#)
- [Immunohistochemistry](#)
- [Immunofluorescence](#)
- [Immunoprecipitation](#)
- [Flow Cytometry](#)
- [Cell Culture](#)

**RNF180 Antibody (C-term) - Images**



RNF180 Antibody (C-term) (Cat. #AP12870c) western blot analysis in Y79 cell line lysates (35ug/lane). This demonstrates the RNF180 antibody detected the RNF180 protein (arrow).



RNF180 Antibody (C-term) (Cat. #AP12870c) immunohistochemistry analysis in formalin fixed and paraffin embedded human kidney tissue followed by peroxidase conjugation of the secondary antibody and DAB staining. This data demonstrates the use of RNF180 Antibody (C-term) for immunohistochemistry. Clinical relevance has not been evaluated.

#### **RNF180 Antibody (C-term) - Background**

E3 ubiquitin-protein ligase which promotes polyubiquitination and degradation by the proteasome pathway of ZIC2 (By similarity).

#### **RNF180 Antibody (C-term) - References**

Rose, J. Phd, et al. Mol. Med. (2010) In press :