

FKBP7 Antibody (C-term)
Affinity Purified Rabbit Polyclonal Antibody (Pab)
Catalog # AP12886b**Specification**

FKBP7 Antibody (C-term) - Product Information

Application	WB, IHC-P, FC,E
Primary Accession	O9Y680
Other Accession	NP_851939.1 , NP_001128684.1
Reactivity	Human
Host	Rabbit
Clonality	Polyclonal
Isotype	Rabbit IgG
Calculated MW	25794
Antigen Region	195-224

FKBP7 Antibody (C-term) - Additional Information**Gene ID** 51661**Other Names**

Peptidyl-prolyl cis-trans isomerase FKBP7, PPIase FKBP7, 23 kDa FK506-binding protein, 23 kDa FKBP, FKBP-23, FK506-binding protein 7, FKBP-7, Rotamase, FKBP7, FKBP23

Target/Specificity

This FKBP7 antibody is generated from rabbits immunized with a KLH conjugated synthetic peptide between 195-224 amino acids from the C-terminal region of human FKBP7.

Dilution

WB~~1:1000
IHC-P~~1:10~50
FC~~1:10~50

Format

Purified polyclonal antibody supplied in PBS with 0.09% (W/V) sodium azide. This antibody is purified through a protein A column, followed by peptide affinity purification.

Storage

Maintain refrigerated at 2-8°C for up to 2 weeks. For long term storage store at -20°C in small aliquots to prevent freeze-thaw cycles.

Precautions

FKBP7 Antibody (C-term) is for research use only and not for use in diagnostic or therapeutic procedures.

FKBP7 Antibody (C-term) - Protein Information**Name** FKBP7

Synonyms FKBP23

Function PPlases accelerate the folding of proteins during protein synthesis.

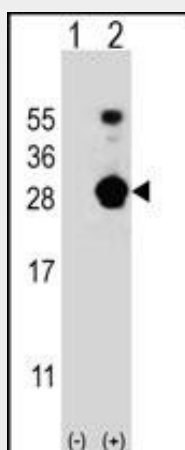
Cellular Location

Endoplasmic reticulum lumen {ECO:0000255|PROSITE- ProRule:PRU10138}

FKBP7 Antibody (C-term) - Protocols

Provided below are standard protocols that you may find useful for product applications.

- [Western Blot](#)
- [Blocking Peptides](#)
- [Dot Blot](#)
- [Immunohistochemistry](#)
- [Immunofluorescence](#)
- [Immunoprecipitation](#)
- [Flow Cytometry](#)
- [Cell Culture](#)

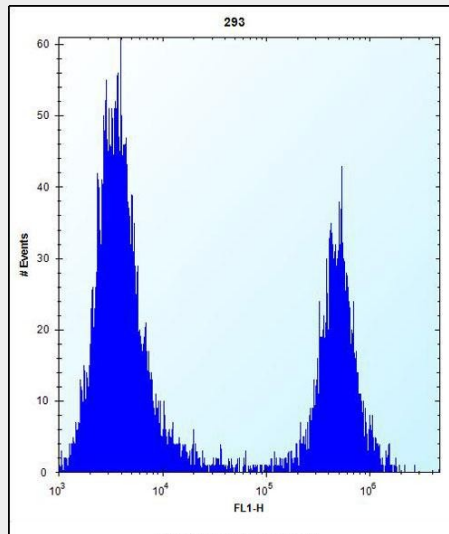
FKBP7 Antibody (C-term) - Images

Western blot analysis of FKBP7 (arrow) using rabbit polyclonal FKBP7 Antibody (C-term) (Cat. #AP12886b). 293 cell lysates (2 ug/lane) either nontransfected (Lane 1) or transiently transfected (Lane 2) with the FKBP7 gene.



FKBP7 Antibody (C-term) (Cat. #AP12886b) immunohistochemistry analysis in formalin fixed and

paraffin embedded human placenta tissue followed by peroxidase conjugation of the secondary antibody and DAB staining. This data demonstrates the use of FKBP7 Antibody (C-term) for immunohistochemistry. Clinical relevance has not been evaluated.



FKBP7 Antibody (C-term) (Cat. #AP12886b) flow cytometric analysis of 293 cells (right histogram) compared to a negative control cell (left histogram). FITC-conjugated goat-anti-rabbit secondary antibodies were used for the analysis.

FKBP7 Antibody (C-term) - Background

The protein encoded by this gene belongs to the FKBP-type peptidyl-prolyl cis/trans isomerase (PPIase) family. Members of this family exhibit PPIase activity and function as molecular chaperones. A similar protein in mouse is located in the endoplasmic reticulum and binds calcium.

FKBP7 Antibody (C-term) - References

Clark, H.F., et al. Genome Res. 13(10):2265-2270(2003)
Patterson, C.E., et al. Genomics 79(6):881-889(2002)
Nakamura, T., et al. Genomics 54(1):89-98(1998)