

HMFG Antibody (C-term)
Affinity Purified Rabbit Polyclonal Antibody (Pab)
Catalog # AP12888B**Specification**

HMFG Antibody (C-term) - Product Information

Application	FC, WB,E
Primary Accession	Q08431
Other Accession	NP_005919.2 , NP_001108086.1
Reactivity	Human
Host	Rabbit
Clonality	Polyclonal
Isotype	Rabbit IgG
Calculated MW	43105
Antigen Region	316-345

HMFG Antibody (C-term) - Additional Information**Gene ID** 4240**Other Names**

Lactadherin, Breast epithelial antigen BA46, HMFG, MFGM, Milk fat globule-EGF factor 8, MFG-E8, SED1, Lactadherin short form, Medin, MFGE8

Target/Specificity

This HMFG antibody is generated from rabbits immunized with a KLH conjugated synthetic peptide between 316-345 amino acids from the C-terminal region of human HMFG.

Dilution

FC~~1:10~50

WB~~1:1000

E~~Use at an assay dependent concentration.

Format

Purified polyclonal antibody supplied in PBS with 0.09% (W/V) sodium azide. This antibody is purified through a protein A column, followed by peptide affinity purification.

Storage

Maintain refrigerated at 2-8°C for up to 2 weeks. For long term storage store at -20°C in small aliquots to prevent freeze-thaw cycles.

Precautions

HMFG Antibody (C-term) is for research use only and not for use in diagnostic or therapeutic procedures.

HMFG Antibody (C-term) - Protein Information**Name** MFGE8

Function Plays an important role in the maintenance of intestinal epithelial homeostasis and the promotion of mucosal healing. Promotes VEGF-dependent neovascularization (By similarity). Contributes to phagocytic removal of apoptotic cells in many tissues. Specific ligand for the alpha-v/beta-3 and alpha-v/beta-5 receptors. Also binds to phosphatidylserine-enriched cell surfaces in a receptor-independent manner. Zona pellucida-binding protein which may play a role in gamete interaction.

Cellular Location

Membrane; Peripheral membrane protein. Secreted. Cytoplasmic vesicle, secretory vesicle, acrosome membrane {ECO:0000250|UniProtKB:P79385}; Peripheral membrane protein {ECO:0000250|UniProtKB:P79385}. Note=Located in the acrosomal region of zona-pellucida bound sperm. {ECO:0000250|UniProtKB:P79385}

Tissue Location

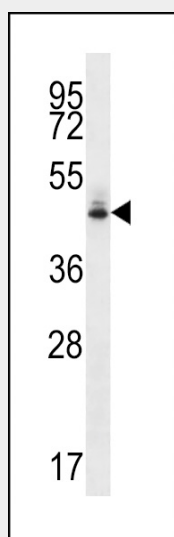
Mammary epithelial cell surfaces and aortic media. Overexpressed in several carcinomas

HMFG Antibody (C-term) - Protocols

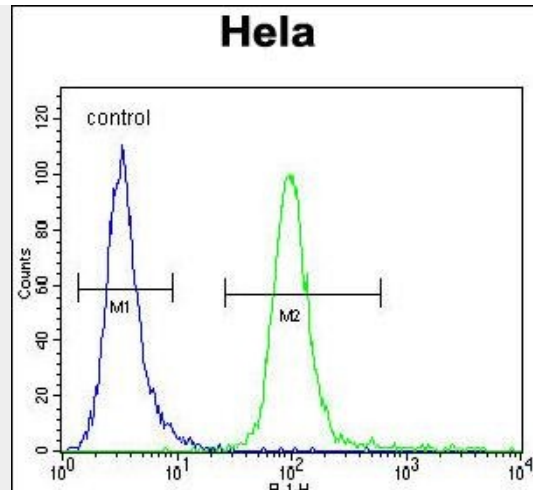
Provided below are standard protocols that you may find useful for product applications.

- [Western Blot](#)
- [Blocking Peptides](#)
- [Dot Blot](#)
- [Immunohistochemistry](#)
- [Immunofluorescence](#)
- [Immunoprecipitation](#)
- [Flow Cytometry](#)
- [Cell Culture](#)

HMFG Antibody (C-term) - Images



HMFG Antibody (C-term) (Cat. #AP12888b) western blot analysis in HeLa cell line lysates (35ug/lane). This demonstrates the HMFG antibody detected the HMFG protein (arrow).



HMFG Antibody (C-term) (Cat. #AP12888b) flow cytometric analysis of Hela cells (right histogram) compared to a negative control cell (left histogram). FITC-conjugated goat-anti-rabbit secondary antibodies were used for the analysis.

HMFG Antibody (C-term) - Background

HMFG plays an important role in the maintenance of intestinal epithelial homeostasis and the promotion of mucosal healing. Promotes VEGF-dependent neovascularization (By similarity). Contributes to phagocytic removal of apoptotic cells in many tissues. Specific ligand for the alpha-v/beta-3 and alpha-v/beta-5 receptors. Also binds to phosphatidylserine-enriched cell surfaces in a receptor-independent manner. Zona pellucida-binding protein which may play a role in gamete interaction. Binds specifically to rotavirus and inhibits its replication. Medin is the main constituent of aortic medial amyloid.

HMFG Antibody (C-term) - References

Yamaguchi, H., et al. Eur. J. Immunol. 40(6):1778-1785(2010)
Wheeler, H.E., et al. PLoS Genet. 5 (10), E1000685 (2009) :
Hu, C.Y., et al. Lupus 18(8):676-681(2009)
Fu, Z., et al. Circ. Res. 104(12):1337-1346(2009)
Raymond, A., et al. J. Cell. Biochem. 106(6):957-966(2009)