

BCAT2 Antibody (C-term)
Purified Rabbit Polyclonal Antibody (Pab)
Catalog # AP12896b**Specification**

BCAT2 Antibody (C-term) - Product Information

Application	IHC-P, WB,E
Primary Accession	O15382
Other Accession	NP_001158245.1 , NP_001181.2
Reactivity	Human
Host	Rabbit
Clonality	Polyclonal
Isotype	Rabbit IgG
Calculated MW	44288
Antigen Region	309-336

BCAT2 Antibody (C-term) - Additional Information**Gene ID** 587**Other Names**

Branched-chain-amino-acid aminotransferase, mitochondrial, BCAT(m), Placental protein 18, PP18, BCAT2, BCATM, BCT2, ECA40

Target/Specificity

This BCAT2 antibody is generated from rabbits immunized with a KLH conjugated synthetic peptide between 309-336 amino acids from the C-terminal region of human BCAT2.

Dilution

IHC-P~~1:10~50

WB~~1:1000

E~~Use at an assay dependent concentration.

Format

Purified polyclonal antibody supplied in PBS with 0.09% (W/V) sodium azide. This antibody is prepared by Saturated Ammonium Sulfate (SAS) precipitation followed by dialysis against PBS.

Storage

Maintain refrigerated at 2-8°C for up to 2 weeks. For long term storage store at -20°C in small aliquots to prevent freeze-thaw cycles.

Precautions

BCAT2 Antibody (C-term) is for research use only and not for use in diagnostic or therapeutic procedures.

BCAT2 Antibody (C-term) - Protein Information**Name** BCAT2

Function Catalyzes the first reaction in the catabolism of the essential branched chain amino acids leucine, isoleucine, and valine (PubMed:[17050531](#), PubMed:[25653144](#), PubMed:[8702755](#)). May also function as a transporter of branched chain alpha-keto acids (By similarity).

Cellular Location

Mitochondrion {ECO:0000250|UniProtKB:O35854}.

Tissue Location

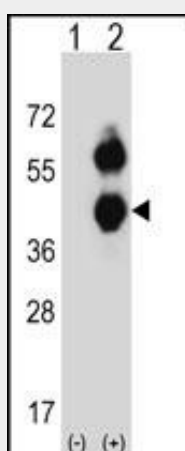
Ubiquitous..

BCAT2 Antibody (C-term) - Protocols

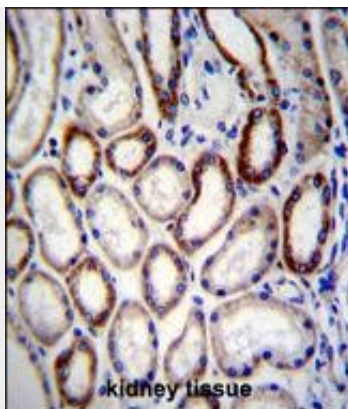
Provided below are standard protocols that you may find useful for product applications.

- [Western Blot](#)
- [Blocking Peptides](#)
- [Dot Blot](#)
- [Immunohistochemistry](#)
- [Immunofluorescence](#)
- [Immunoprecipitation](#)
- [Flow Cytometry](#)
- [Cell Culture](#)

BCAT2 Antibody (C-term) - Images



Western blot analysis of BCAT2 (arrow) using rabbit polyclonal BCAT2 Antibody (C-term) (Cat. #AP12896b). 293 cell lysates (2 ug/lane) either nontransfected (Lane 1) or transiently transfected (Lane 2) with the BCAT2 gene.



BCAT2 Antibody (C-term) (Cat. #AP12896b) immunohistochemistry analysis in formalin fixed and paraffin embedded human kidney tissue followed by peroxidase conjugation of the secondary antibody and DAB staining. This data demonstrates the use of BCAT2 Antibody (C-term) for immunohistochemistry. Clinical relevance has not been evaluated.

BCAT2 Antibody (C-term) - Background

This gene encodes a branched chain aminotransferase found in mitochondria. The encoded protein forms a dimer that catalyzes the first step in the production of the branched chain amino acids leucine, isoleucine, and valine. Multiple transcript variants encoding different isoforms have been found for this gene.

BCAT2 Antibody (C-term) - References

Coles, S.J., et al. Biochemistry 48(3):645-656(2009)
Yennawar, N.H., et al. J. Biol. Chem. 281(51):39660-39671(2006)
Goto, M., et al. J. Biol. Chem. 280(44):37246-37256(2005)
Conway, M.E., et al. Biochemistry 43(23):7356-7364(2004)
Yennawar, N., et al. Acta Crystallogr. D Biol. Crystallogr. 57 (PT 4), 506-515 (2001) :