

**GCDH Antibody (C-term)**  
**Affinity Purified Rabbit Polyclonal Antibody (Pab)**  
**Catalog # AP12905b**

**Specification**

---

**GCDH Antibody (C-term) - Product Information**

Application	IHC-P, WB,E
Primary Accession	<a href="#">Q92947</a>
Other Accession	<a href="#">Q8HXX8</a> , <a href="#">Q2KHZ9</a> , <a href="#">NP_000150.1</a> , <a href="#">NP_039663.1</a>
Reactivity	Human
Predicted	Bovine, Monkey
Host	Rabbit
Clonality	Polyclonal
Isotype	Rabbit IgG
Calculated MW	48127
Antigen Region	336-365

**GCDH Antibody (C-term) - Additional Information**

**Gene ID** 2639

**Other Names**

Glutaryl-CoA dehydrogenase, mitochondrial, GCD, GCDH

**Target/Specificity**

This GCDH antibody is generated from rabbits immunized with a KLH conjugated synthetic peptide between 336-365 amino acids from the C-terminal region of human GCDH.

**Dilution**

IHC-P~~1:10~50

WB~~1:1000

E~~Use at an assay dependent concentration.

**Format**

Purified polyclonal antibody supplied in PBS with 0.09% (W/V) sodium azide. This antibody is purified through a protein A column, followed by peptide affinity purification.

**Storage**

Maintain refrigerated at 2-8°C for up to 2 weeks. For long term storage store at -20°C in small aliquots to prevent freeze-thaw cycles.

**Precautions**

GCDH Antibody (C-term) is for research use only and not for use in diagnostic or therapeutic procedures.

**GCDH Antibody (C-term) - Protein Information**

**Name** GCDH

**Function** Catalyzes the oxidative decarboxylation of glutaryl-CoA to crotonyl-CoA and CO(2) in the degradative pathway of L-lysine, L- hydroxylysine, and L-tryptophan metabolism. It uses electron transfer flavoprotein as its electron acceptor. Isoform Short is inactive.

**Cellular Location**

Mitochondrion matrix.

**Tissue Location**

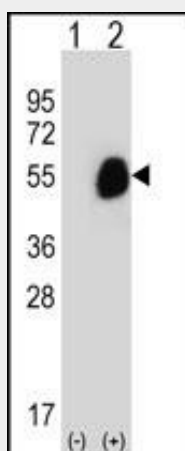
Isoform Long and isoform Short are expressed in fibroblasts and liver

**GCDH Antibody (C-term) - Protocols**

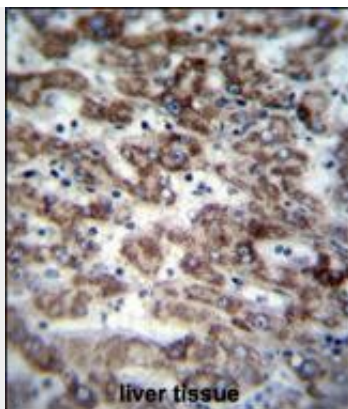
Provided below are standard protocols that you may find useful for product applications.

- [Western Blot](#)
- [Blocking Peptides](#)
- [Dot Blot](#)
- [Immunohistochemistry](#)
- [Immunofluorescence](#)
- [Immunoprecipitation](#)
- [Flow Cytometry](#)
- [Cell Culture](#)

**GCDH Antibody (C-term) - Images**



Western blot analysis of GCDH (arrow) using rabbit polyclonal GCDH Antibody (C-term) (Cat. #AP12905b). 293 cell lysates (2 ug/lane) either nontransfected (Lane 1) or transiently transfected (Lane 2) with the GCDH gene.



GCDH Antibody (C-term) (Cat. #AP12905b) immunohistochemistry analysis in formalin fixed and paraffin embedded human liver tissue followed by peroxidase conjugation of the secondary antibody and DAB staining. This data demonstrates the use of GCDH Antibody (C-term) for immunohistochemistry. Clinical relevance has not been evaluated.

#### **GCDH Antibody (C-term) - Background**

The protein encoded by this gene belongs to the acyl-CoA dehydrogenase family. It catalyzes the oxidative decarboxylation of glutaryl-CoA to crotonyl-CoA and CO(2) in the degradative pathway of L-lysine, L-hydroxylysine, and L-tryptophan metabolism. It uses electron transfer flavoprotein as its electron acceptor. The enzyme exists in the mitochondrial matrix as a homotetramer of 45-kD subunits. Alternatively spliced transcript variants encoding different isoforms have been identified.

#### **GCDH Antibody (C-term) - References**

Bailey, S.D., et al. Diabetes Care 33(10):2250-2253(2010)  
Park, J.D., et al. J. Korean Med. Sci. 25(6):957-960(2010)  
Strauss, K.A., et al. Brain 133 (PT 1), 76-92 (2010) :  
Talmud, P.J., et al. Am. J. Hum. Genet. 85(5):628-642(2009)  
Ganesh, S.K., et al. Nat. Genet. 41(11):1191-1198(2009)