

DGCR6L Antibody (Center)
Affinity Purified Rabbit Polyclonal Antibody (Pab)
Catalog # AP12911C**Specification**

DGCR6L Antibody (Center) - Product Information

Application	WB,E
Primary Accession	Q9BY27
Other Accession	Q14129 , NP_150282.2
Reactivity	Human
Host	Rabbit
Clonality	Polyclonal
Isotype	Rabbit IgG
Calculated MW	24932
Antigen Region	108-135

DGCR6L Antibody (Center) - Additional Information**Gene ID** 85359**Other Names**

Protein DGCR6L, DiGeorge syndrome critical region 6-like protein, DGCR6L

Target/Specificity

This DGCR6L antibody is generated from rabbits immunized with a KLH conjugated synthetic peptide between 108-135 amino acids from the Central region of human DGCR6L.

Dilution

WB~~1:1000

Format

Purified polyclonal antibody supplied in PBS with 0.09% (W/V) sodium azide. This antibody is purified through a protein A column, followed by peptide affinity purification.

Storage

Maintain refrigerated at 2-8°C for up to 2 weeks. For long term storage store at -20°C in small aliquots to prevent freeze-thaw cycles.

Precautions

DGCR6L Antibody (Center) is for research use only and not for use in diagnostic or therapeutic procedures.

DGCR6L Antibody (Center) - Protein Information**Name** DGCR6L

Function May play a role in neural crest cell migration into the third and fourth pharyngeal pouches.

Cellular Location

Nucleus. Note=Predominantly nuclear

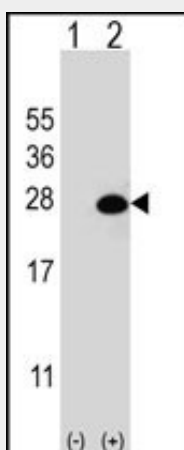
Tissue Location

Widely expressed in fetal and adult tissues. Highest expression in liver, heart and skeletal muscle. Lower levels in pancreas and placenta. Weak expression in brain

DGCR6L Antibody (Center) - Protocols

Provided below are standard protocols that you may find useful for product applications.

- [Western Blot](#)
- [Blocking Peptides](#)
- [Dot Blot](#)
- [Immunohistochemistry](#)
- [Immunofluorescence](#)
- [Immunoprecipitation](#)
- [Flow Cytometry](#)
- [Cell Culture](#)

DGCR6L Antibody (Center) - Images

Western blot analysis of DGCR6L (arrow) using rabbit polyclonal DGCR6L Antibody (Center) (Cat. #AP12911c). 293 cell lysates (2 ug/lane) either nontransfected (Lane 1) or transiently transfected (Lane 2) with the DGCR6L gene.

DGCR6L Antibody (Center) - Background

This gene, the result of a duplication at this locus, is one of two functional genes encoding nearly identical proteins that have similar expression patterns. The product of this gene is a protein that shares homology with the Drosophila gonadal protein, expressed in gonadal tissues and germ cells, and with the human laminin gamma-1 chain that functions in cell attachment and migration. This gene is located in a region of chromosome 22 implicated in the DiGeorge syndrome, one facet of a broader collection of anomalies referred to as the CATCH 22 syndrome.

DGCR6L Antibody (Center) - References

Li, X., et al. Int. J. Biochem. Cell Biol. 42(1):70-79(2010)
Pfuhl, T., et al. Hum. Genet. 117(1):70-80(2005)
Edelmann, L., et al. Genome Res. 11(2):208-217(2001)