

UBTD1 Antibody
Affinity Purified Rabbit Polyclonal Antibody (Pab)
Catalog # AP12921a**Specification**

UBTD1 Antibody - Product Information

Application	WB,E
Primary Accession	O9HAC8
Other Accession	NP_079230.1
Reactivity	Human
Host	Rabbit
Clonality	Polyclonal
Isotype	Rabbit IgG
Calculated MW	25938

UBTD1 Antibody - Additional Information**Gene ID** 80019**Other Names**

Ubiquitin domain-containing protein 1, UBTD1

Target/Specificity

This UBTD1 antibody is generated from rabbits immunized with a recombinant protein from human UBTD1.

Dilution

WB~~1:1000

E~~Use at an assay dependent concentration.

Format

Purified polyclonal antibody supplied in PBS with 0.09% (W/V) sodium azide. This antibody is purified through a protein A column, followed by peptide affinity purification.

Storage

Maintain refrigerated at 2-8°C for up to 2 weeks. For long term storage store at -20°C in small aliquots to prevent freeze-thaw cycles.

Precautions

UBTD1 Antibody is for research use only and not for use in diagnostic or therapeutic procedures.

UBTD1 Antibody - Protein Information**Name** UBTD1

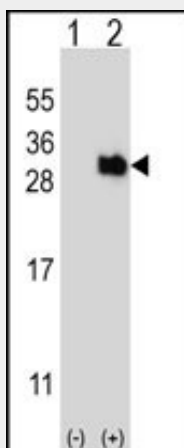
Function May be involved in the regulation of cellular senescence through a positive feedback loop with TP53. Is a TP53 downstream target gene that increases the stability of TP53 protein by promoting the ubiquitination and degradation of MDM2.

UBTD1 Antibody - Protocols

Provided below are standard protocols that you may find useful for product applications.

- [Western Blot](#)
- [Blocking Peptides](#)
- [Dot Blot](#)
- [Immunohistochemistry](#)
- [Immunofluorescence](#)
- [Immunoprecipitation](#)
- [Flow Cytometry](#)
- [Cell Culture](#)

UBTD1 Antibody - Images



Western blot analysis of UBTD1 (arrow) using rabbit polyclonal UBTD1 Antibody (Cat. #AP12921a). 293 cell lysates (2 ug/lane) either nontransfected (Lane 1) or transiently transfected (Lane 2) with the UBTD1 gene.

UBTD1 Antibody - References

Lamesch, P., et al. Genomics 89(3):307-315(2007)
Deloukas, P., et al. Nature 429(6990):375-381(2004)