

ZCRB1 Antibody (C-term)
Affinity Purified Rabbit Polyclonal Antibody (Pab)
Catalog # AP12932B**Specification**

ZCRB1 Antibody (C-term) - Product Information

Application	FC, IHC-P, WB,E
Primary Accession	Q8TBF4
Other Accession	Q6DJI9 , Q56JZ7 , NP_149105.3
Reactivity	Human, Mouse
Predicted	Bovine, Xenopus
Host	Rabbit
Clonality	Polyclonal
Isotype	Rabbit IgG
Calculated MW	24592
Antigen Region	184-212

ZCRB1 Antibody (C-term) - Additional Information**Gene ID** 85437**Other Names**

Zinc finger CCHC-type and RNA-binding motif-containing protein 1, U11/U12 small nuclear ribonucleoprotein 31 kDa protein, U11/U12 snRNP 31 kDa protein, U11/U12-31K, ZCRB1

Target/Specificity

This ZCRB1 antibody is generated from rabbits immunized with a KLH conjugated synthetic peptide between 184-212 amino acids from the C-terminal region of human ZCRB1.

Dilution

FC~~1:10~50

IHC-P~~1:10~50

WB~~1:1000

E~~Use at an assay dependent concentration.

Format

Purified polyclonal antibody supplied in PBS with 0.09% (W/V) sodium azide. This antibody is purified through a protein A column, followed by peptide affinity purification.

Storage

Maintain refrigerated at 2-8°C for up to 2 weeks. For long term storage store at -20°C in small aliquots to prevent freeze-thaw cycles.

Precautions

ZCRB1 Antibody (C-term) is for research use only and not for use in diagnostic or therapeutic procedures.

ZCRB1 Antibody (C-term) - Protein Information

Name ZCRB1

Cellular Location

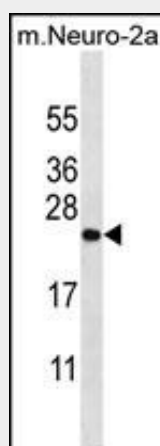
Nucleus, nucleoplasm

ZCRB1 Antibody (C-term) - Protocols

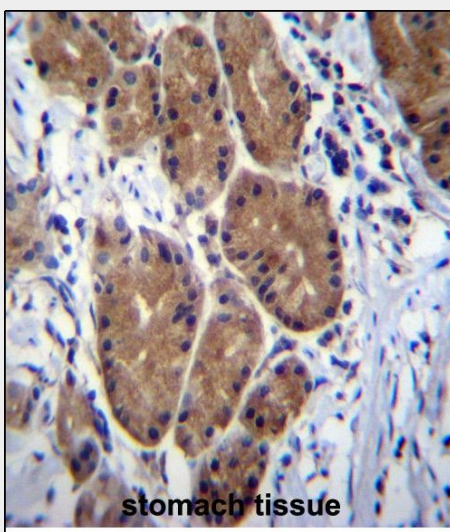
Provided below are standard protocols that you may find useful for product applications.

- [Western Blot](#)
- [Blocking Peptides](#)
- [Dot Blot](#)
- [Immunohistochemistry](#)
- [Immunofluorescence](#)
- [Immunoprecipitation](#)
- [Flow Cytometry](#)
- [Cell Culture](#)

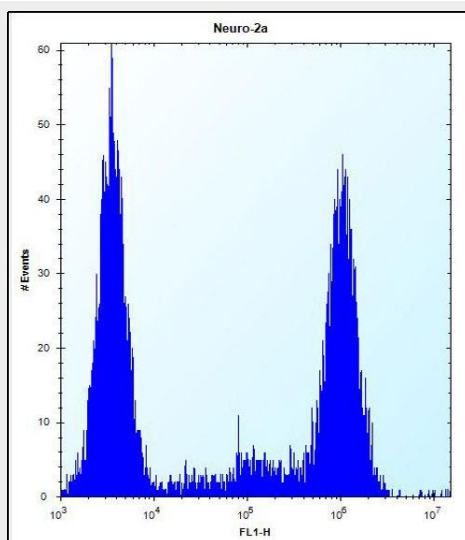
ZCRB1 Antibody (C-term) - Images



ZCRB1 Antibody (C-term) (Cat. #AP12932b) western blot analysis in mouse Neuro-2a cell line lysates (35ug/lane). This demonstrates the ZCRB1 antibody detected the ZCRB1 protein (arrow).



ZCRB1 Antibody (C-term) (Cat. #AP12932b) immunohistochemistry analysis in formalin fixed and paraffin embedded human stomach tissue followed by peroxidase conjugation of the secondary antibody and DAB staining. This data demonstrates the use of ZCRB1 Antibody (C-term) for immunohistochemistry. Clinical relevance has not been evaluated.



ZCRB1 Antibody (C-term) (Cat. #AP12932b) flow cytometric analysis of Neuro-2a cells (right histogram) compared to a negative control cell (left histogram). FITC-conjugated donkey-anti-rabbit secondary antibodies were used for the analysis.

ZCRB1 Antibody (C-term) - Background

Pre-mRNA splicing is catalyzed by the spliceosome. U12-type spliceosome binds U12-type pre-mRNAs and recognizes the 5' splice site and branch-point sequence. U11 and U12 snRNPs are components of U12-type spliceosome and function as a molecular bridge connecting both ends of the intron. The protein encoded by this gene contains a RNA recognition motif. It was identified as one of the protein components of U11/U12 snRNPs. This protein and many other U11/U12 snRNP proteins are highly conserved in organisms known to contain U12-type introns. These proteins have been shown to be essential for cell viability, suggesting the key roles in U12-type splicing.

ZCRB1 Antibody (C-term) - References

Wang, H., et al. Genomics 89(1):59-69(2007)
Olsen, J.V., et al. Cell 127(3):635-648(2006)
Olsen, J.V., et al. Cell 127(3):635-648(2006)
Will, C.L., et al. RNA 10(6):929-941(2004)