

NRN1L Antibody (Center)
Affinity Purified Rabbit Polyclonal Antibody (Pab)
Catalog # AP12935c**Specification**

NRN1L Antibody (Center) - Product Information

Application	WB, IHC-P,E
Primary Accession	Q496H8
Other Accession	NP_940845.1
Reactivity	Human
Host	Rabbit
Clonality	Polyclonal
Isotype	Rabbit IgG
Calculated MW	17786
Antigen Region	40-69

NRN1L Antibody (Center) - Additional Information**Gene ID** 123904**Other Names**

Neuritin-like protein, NRN1L

Target/Specificity

This NRN1L antibody is generated from rabbits immunized with a KLH conjugated synthetic peptide between 40-69 amino acids from the Central region of human NRN1L.

Dilution

WB~~1:1000

IHC-P~~1:10~50

Format

Purified polyclonal antibody supplied in PBS with 0.09% (W/V) sodium azide. This antibody is purified through a protein A column, followed by peptide affinity purification.

Storage

Maintain refrigerated at 2-8°C for up to 2 weeks. For long term storage store at -20°C in small aliquots to prevent freeze-thaw cycles.

Precautions

NRN1L Antibody (Center) is for research use only and not for use in diagnostic or therapeutic procedures.

NRN1L Antibody (Center) - Protein Information**Name** NRN1L**Cellular Location**

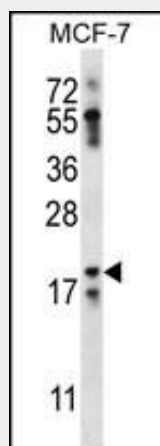
Cell membrane; Lipid-anchor, GPI- anchor

NRN1L Antibody (Center) - Protocols

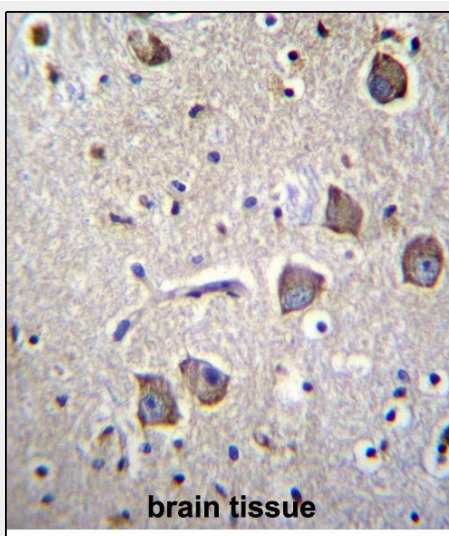
Provided below are standard protocols that you may find useful for product applications.

- [Western Blot](#)
- [Blocking Peptides](#)
- [Dot Blot](#)
- [Immunohistochemistry](#)
- [Immunofluorescence](#)
- [Immunoprecipitation](#)
- [Flow Cytometry](#)
- [Cell Culture](#)

NRN1L Antibody (Center) - Images



NRN1L Antibody (Center) (Cat. #AP12935c) western blot analysis in MCF-7 cell line lysates (35ug/lane). This demonstrates the NRN1L antibody detected the NRN1L protein (arrow).



NRN1L Antibody (Center) (Cat. #AP12935c) immunohistochemistry analysis in formalin fixed and paraffin embedded human brain tissue followed by peroxidase conjugation of the secondary antibody and DAB staining. This data demonstrates the use of NRN1L Antibody (Center) for

immunohistochemistry. Clinical relevance has not been evaluated.

NRN1L Antibody (Center) - References

Fujino, T., et al. J. Comp. Neurol. 507(5):1831-1845(2008)

Clark, H.F., et al. Genome Res. 13(10):2265-2270(2003)