

**IFI6 Antibody (N-term)**  
**Affinity Purified Rabbit Polyclonal Antibody (Pab)**  
**Catalog # AP12965a****Specification**

---

**IFI6 Antibody (N-term) - Product Information**

Application	WB,E
Primary Accession	<a href="#">P09912-3</a>
Other Accession	<a href="#">NP_002029.3</a>
Reactivity	Human
Host	Rabbit
Clonality	Polyclonal
Isotype	Rabbit IgG
Antigen Region	5-34

**IFI6 Antibody (N-term) - Additional Information****Other Names**

Interferon alpha-inducible protein 6, Interferon-induced protein 6-16, Ifi-6-16, IFI6, G1P3

**Target/Specificity**

This IFI6 antibody is generated from rabbits immunized with a KLH conjugated synthetic peptide between 5-34 amino acids of human IFI6(P09912-3).

**Dilution**

WB~~1:1000

E~~Use at an assay dependent concentration.

**Format**

Purified polyclonal antibody supplied in PBS with 0.09% (W/V) sodium azide. This antibody is purified through a protein A column, followed by peptide affinity purification.

**Storage**

Maintain refrigerated at 2-8°C for up to 2 weeks. For long term storage store at -20°C in small aliquots to prevent freeze-thaw cycles.

**Precautions**

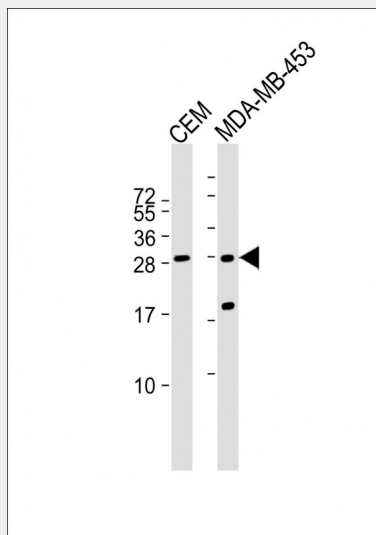
IFI6 Antibody (N-term) is for research use only and not for use in diagnostic or therapeutic procedures.

**IFI6 Antibody (N-term) - Protein Information****IFI6 Antibody (N-term) - Protocols**

Provided below are standard protocols that you may find useful for product applications.

- [Western Blot](#)
- [Blocking Peptides](#)
- [Dot Blot](#)
- [Immunohistochemistry](#)
- [Immunofluorescence](#)
- [Immunoprecipitation](#)
- [Flow Cytometry](#)
- [Cell Culture](#)

#### IFI6 Antibody (N-term) - Images



All lanes : Anti-IFI6 Antibody (N-term) at 1:1000 dilution Lane 1: CEM whole cell lysate Lane 2: MDA-MB-453 whole cell lysate Lysates/proteins at 20 µg per lane. Secondary Goat Anti-Rabbit IgG, (H+L), Peroxidase conjugated at 1/10000 dilution. Predicted band size : 13 kDa Blocking/Dilution buffer: 5% NFDM/TBST.

#### IFI6 Antibody (N-term) - Background

This gene was first identified as one of the many genes induced by interferon. The encoded protein may play a critical role in the regulation of apoptosis. A minisatellite that consists of 26 repeats of a 12 nucleotide repeating element resembling the mammalian splice donor consensus sequence begins near the end of the second exon. Alternatively spliced transcript variants that encode different isoforms by using the two downstream repeat units as splice donor sites have been described.

#### IFI6 Antibody (N-term) - References

Davila, S., et al. Genes Immun. 11(3):232-238(2010)  
Szegedi, K., et al. Exp. Dermatol. 19(3):269-278(2010)  
Johnatty, S.E., et al. PLoS Genet. 6 (7), E1001016 (2010) :  
Zhao, D., et al. Virol. J. 5, 114 (2008) :  
Cheriyath, V., et al. J. Clin. Invest. 117(10):3107-3117(2007)