

**SFRP5 Antibody (Center)**  
**Affinity Purified Rabbit Polyclonal Antibody (Pab)**  
**Catalog # AP12966C**

**Specification**

---

**SFRP5 Antibody (Center) - Product Information**

Application	WB, IHC-P-Leica,E
Primary Accession	<a href="#">Q5T4F7</a>
Other Accession	<a href="#">Q9XSC1</a> , <a href="#">NP_003006.2</a>
Reactivity	Human, Mouse
Predicted	Bovine
Host	Rabbit
Clonality	Polyclonal
Isotype	Rabbit IgG
Antigen Region	190-219

**SFRP5 Antibody (Center) - Additional Information**

**Gene ID** 6425

**Other Names**

Secreted frizzled-related protein 5, sFRP-5, Frizzled-related protein 1b, FRP-1b, Secreted apoptosis-related protein 3, SARP-3, SFRP5, FRP1B, SARP3

**Target/Specificity**

This SFRP5 antibody is generated from rabbits immunized with a KLH conjugated synthetic peptide between 190-219 amino acids from the Central region of human SFRP5.

**Dilution**

WB~~1:2000

IHC-P-Leica~~1:500

E~~Use at an assay dependent concentration.

**Format**

Purified polyclonal antibody supplied in PBS with 0.09% (W/V) sodium azide. This antibody is purified through a protein A column, followed by peptide affinity purification.

**Storage**

Maintain refrigerated at 2-8°C for up to 2 weeks. For long term storage store at -20°C in small aliquots to prevent freeze-thaw cycles.

**Precautions**

SFRP5 Antibody (Center) is for research use only and not for use in diagnostic or therapeutic procedures.

**SFRP5 Antibody (Center) - Protein Information**

**Name** SFRP5

**Synonyms** FRP1B, SARP3

**Function** Soluble frizzled-related proteins (SFRPS) function as modulators of Wnt signaling through direct interaction with Wnts. They have a role in regulating cell growth and differentiation in specific cell types. SFRP5 may be involved in determining the polarity of photoreceptor, and perhaps, other cells in the retina.

**Cellular Location**

Secreted.

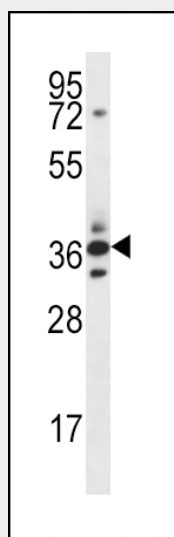
**Tissue Location**

Highly expressed in the retinal pigment epithelium (RPE) and pancreas. Weak expression in heart, liver and muscle

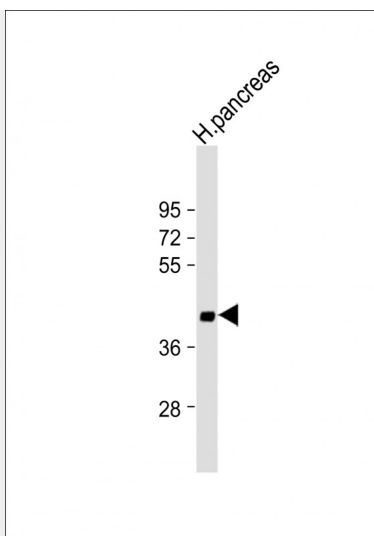
**SFRP5 Antibody (Center) - Protocols**

Provided below are standard protocols that you may find useful for product applications.

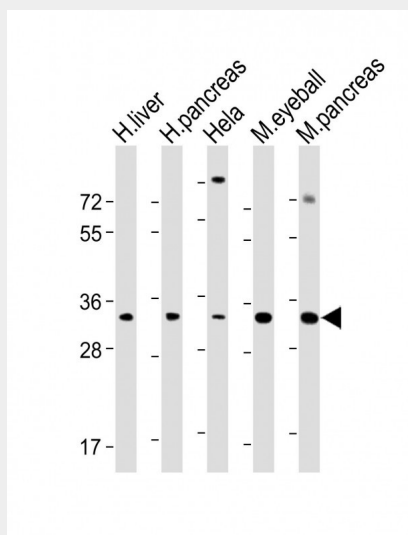
- [Western Blot](#)
- [Blocking Peptides](#)
- [Dot Blot](#)
- [Immunohistochemistry](#)
- [Immunofluorescence](#)
- [Immunoprecipitation](#)
- [Flow Cytometry](#)
- [Cell Culture](#)

**SFRP5 Antibody (Center) - Images**

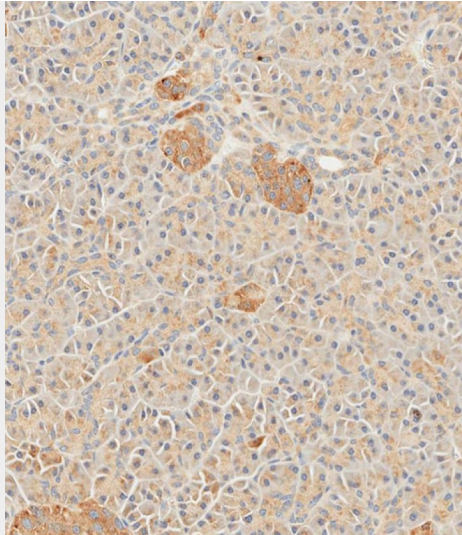
SFRP5 Antibody (Center) (Cat. #AP12966c) western blot analysis in mouse heart tissue lysates (35ug/lane). This demonstrates the SFRP5 antibody detected the SFRP5 protein (arrow).



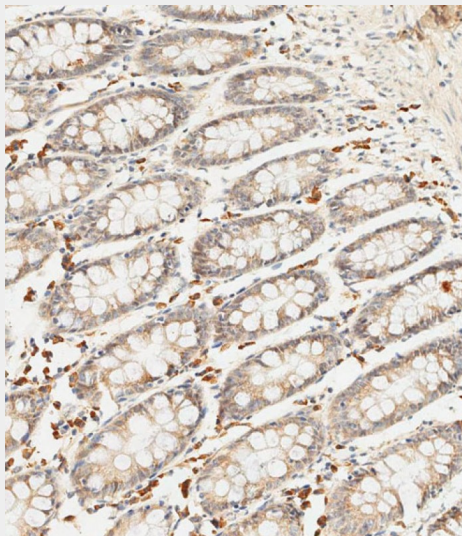
Anti-SFRP5 Antibody (Center) at 1:2000 dilution + human pancreas lysate Lysates/proteins at 20  $\mu$ g per lane. Secondary Goat Anti-Rabbit IgG, (H+L), Peroxidase conjugated at 1/10000 dilution. Predicted band size : 36 kDa Blocking/Dilution buffer: 5% NFDM/TBST.



All lanes : Anti-SFRP5 Antibody (Center) at 1:2000 dilution Lane 1: Human liver lysate Lane 2: Human pancreas lysate Lane 3: Hela whole cell lysate Lane 4: Mouse eyeball lysate Lane 5: Mouse pancreas lysate Lysates/proteins at 20  $\mu$ g per lane. Secondary Goat Anti-Rabbit IgG, (H+L), Peroxidase conjugated at 1/10000 dilution. Predicted band size : 36 kDa Blocking/Dilution buffer: 5% NFDM/TBST.



Immunohistochemical analysis of paraffin-embedded human pancreas tissue using AP12966c performed on the Leica® BOND RXm. Samples were incubated with primary antibody(1/500) for 1 hours at room temperature. A undiluted biotinylated CRF Anti-Polyvalent HRP Polymer antibody was used as the secondary antibody.



Immunohistochemical analysis of paraffin-embedded human colon tissue using AP12966c performed on the Leica® BOND RXm. Samples were incubated with primary antibody(1/500) for 1 hours at room temperature. A undiluted biotinylated CRF Anti-Polyvalent HRP Polymer antibody was used as the secondary antibody.

#### **SFRP5 Antibody (Center) - Background**

Secreted frizzled-related protein 5 (SFRP5) is a member of the SFRP family that contains a cysteine-rich domain homologous to the putative Wnt-binding site of Frizzled proteins. SFRPs act as soluble modulators of Wnt signaling. SFRP5 and SFRP1 may be involved in determining the polarity of photoreceptor cells in the retina. SFRP5 is highly expressed in the retinal pigment epithelium, and moderately expressed in the pancreas. [provided by RefSeq].

#### **SFRP5 Antibody (Center) - References**

Su, H.Y., et al. Int. J. Cancer 127(3):555-567(2010)  
Sharma, S., et al. Am. J. Respir. Crit. Care Med. 181(4):328-336(2010)  
Jost, E., et al. Cancer Lett. 281(1):24-31(2009)  
Zhao, C., et al. BMC Cancer 9, 224 (2009) :  
Tanaka, J., et al. Hepatogastroenterology 55(85):1265-1268(2008)