

SFRS11 Antibody (C-term)
Affinity Purified Rabbit Polyclonal Antibody (Pab)
Catalog # AP12968B**Specification**

SFRS11 Antibody (C-term) - Product Information

Application	WB,E
Primary Accession	Q05519
Other Accession	NP_004759.1
Reactivity	Human
Host	Rabbit
Clonality	Polyclonal
Isotype	Rabbit IgG
Calculated MW	53542
Antigen Region	366-395

SFRS11 Antibody (C-term) - Additional Information**Gene ID** 9295**Other Names**

Serine/arginine-rich splicing factor 11, Arginine-rich 54 kDa nuclear protein, p54, Splicing factor, arginine/serine-rich 11, SRSF11, SFRS11

Target/Specificity

This SFRS11 antibody is generated from rabbits immunized with a KLH conjugated synthetic peptide between 366-395 amino acids from the C-terminal region of human SFRS11.

Dilution

WB~~1:1000

E~~Use at an assay dependent concentration.

Format

Purified polyclonal antibody supplied in PBS with 0.09% (W/V) sodium azide. This antibody is purified through a protein A column, followed by peptide affinity purification.

Storage

Maintain refrigerated at 2-8°C for up to 2 weeks. For long term storage store at -20°C in small aliquots to prevent freeze-thaw cycles.

Precautions

SFRS11 Antibody (C-term) is for research use only and not for use in diagnostic or therapeutic procedures.

SFRS11 Antibody (C-term) - Protein Information**Name** SRSF11

Synonyms SFRS11

Function May function in pre-mRNA splicing.

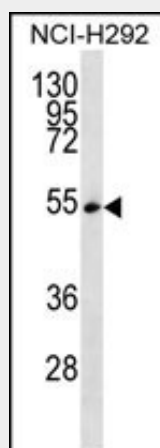
Cellular Location

Nucleus. Note=Colocalizes with spliceosome components

SFRS11 Antibody (C-term) - Protocols

Provided below are standard protocols that you may find useful for product applications.

- [Western Blot](#)
- [Blocking Peptides](#)
- [Dot Blot](#)
- [Immunohistochemistry](#)
- [Immunofluorescence](#)
- [Immunoprecipitation](#)
- [Flow Cytometry](#)
- [Cell Culture](#)

SFRS11 Antibody (C-term) - Images

SFRS11 Antibody (C-term) (Cat. #AP12968b) western blot analysis in NCI-H292 cell line lysates (35ug/lane). This demonstrates the SFRS11 antibody detected the SFRS11 protein (arrow).

SFRS11 Antibody (C-term) - Background

This gene encodes 54-kD nuclear protein that contains an arginine/serine-rich region similar to segments found in pre-mRNA splicing factors. Although the function of this protein is not yet known, structure and immunolocalization data suggest that it may play a role in pre-mRNA processing. Alternative splicing results in multiple transcript variants encoding different proteins. In addition, a pseudogene of this gene has been found on chromosome 12.

SFRS11 Antibody (C-term) - References

Rose, J.E., et al. Mol. Med. 16 (7-8), 247-253 (2010) :
Manley, J.L., et al. Genes Dev. 24(11):1073-1074(2010)

Casado, P., et al. J Proteomics 71(6):592-600(2009)
Shepard, P.J., et al. Genome Biol. 10 (10), 242 (2009) :
Sugiyama, N., et al. Mol. Cell Proteomics 6(6):1103-1109(2007)