

RNF148 Antibody (C-term)
Affinity Purified Rabbit Polyclonal Antibody (Pab)
Catalog # AP12970b**Specification**

RNF148 Antibody (C-term) - Product Information

Application	WB,E
Primary Accession	Q8N7C7
Other Accession	NP_932351.1
Reactivity	Human
Host	Rabbit
Clonality	Polyclonal
Isotype	Rabbit IgG
Calculated MW	34397
Antigen Region	206-234

RNF148 Antibody (C-term) - Additional Information**Gene ID** 378925**Other Names**

RING finger protein 148, RNF148

Target/Specificity

This RNF148 antibody is generated from rabbits immunized with a KLH conjugated synthetic peptide between 206-234 amino acids from the C-terminal region of human RNF148.

Dilution

WB~~1:1000

E~~Use at an assay dependent concentration.

Format

Purified polyclonal antibody supplied in PBS with 0.09% (W/V) sodium azide. This antibody is purified through a protein A column, followed by peptide affinity purification.

Storage

Maintain refrigerated at 2-8°C for up to 2 weeks. For long term storage store at -20°C in small aliquots to prevent freeze-thaw cycles.

Precautions

RNF148 Antibody (C-term) is for research use only and not for use in diagnostic or therapeutic procedures.

RNF148 Antibody (C-term) - Protein Information**Name** RNF148 ([HGNC:22411](#))**Cellular Location**

Membrane; Single-pass membrane protein

Tissue Location

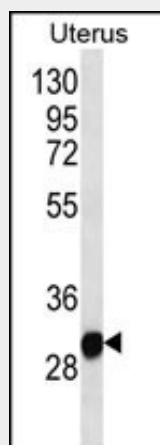
Abundantly expressed in testis and slightly in pancreas. Mainly present in the interstitial cells of testicular tissues.

RNF148 Antibody (C-term) - Protocols

Provided below are standard protocols that you may find useful for product applications.

- [Western Blot](#)
- [Blocking Peptides](#)
- [Dot Blot](#)
- [Immunohistochemistry](#)
- [Immunofluorescence](#)
- [Immunoprecipitation](#)
- [Flow Cytometry](#)
- [Cell Culture](#)

RNF148 Antibody (C-term) - Images



RNF148 Antibody (C-term) (Cat. #AP12970b) western blot analysis in human normal Uterus tissue lysates (35ug/lane). This demonstrates the RNF148 antibody detected the RNF148 protein (arrow).

RNF148 Antibody (C-term) - Background

RNF148 contains one PA (protease associated) domain and one RING-type zinc finger. The exact function of RNF148 remains unknown.

RNF148 Antibody (C-term) - References

Saurin, A.J., et al. Trends Biochem. Sci. 21(6):208-214(1996)