

**EAPP Antibody (C-term)**  
**Affinity Purified Rabbit Polyclonal Antibody (Pab)**  
**Catalog # AP12971b****Specification**

---

**EAPP Antibody (C-term) - Product Information**

Application	WB, IHC-P,E
Primary Accession	<a href="#">Q56P03</a>
Other Accession	<a href="#">NP_060923.2</a>
Reactivity	Human
Host	Rabbit
Clonality	Polyclonal
Isotype	Rabbit IgG
Calculated MW	32762
Antigen Region	204-233

**EAPP Antibody (C-term) - Additional Information****Gene ID** 55837**Other Names**

E2F-associated phosphoprotein, EAPP, EAPP, C14orf11

**Target/Specificity**

This EAPP antibody is generated from rabbits immunized with a KLH conjugated synthetic peptide between 204-233 amino acids from the C-terminal region of human EAPP.

**Dilution**

WB~~1:1000

IHC-P~~1:10~50

**Format**

Purified polyclonal antibody supplied in PBS with 0.09% (W/V) sodium azide. This antibody is purified through a protein A column, followed by peptide affinity purification.

**Storage**

Maintain refrigerated at 2-8°C for up to 2 weeks. For long term storage store at -20°C in small aliquots to prevent freeze-thaw cycles.

**Precautions**

EAPP Antibody (C-term) is for research use only and not for use in diagnostic or therapeutic procedures.

**EAPP Antibody (C-term) - Protein Information****Name** EAPP**Synonyms** C14orf11

**Function** May play an important role in the fine-tuning of both major E2F1 activities, the regulation of the cell-cycle and the induction of apoptosis. Promotes S-phase entry, and inhibits p14(ARP) expression.

**Cellular Location**

Cytoplasm. Nucleus.

**Tissue Location**

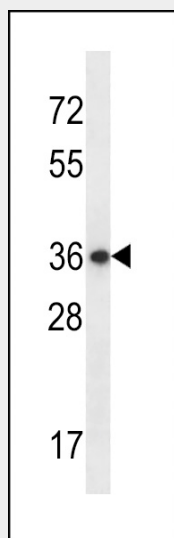
Ubiquitously expressed. Highest levels in heart, placenta, skeletal muscle and pancreas. Lower levels in brain, lung and kidney. In the brain, expressed in all regions with high levels in the cerebellum and cerebral cortex. Expressed in COS1 and transformed skin fibroblasts.

**EAPP Antibody (C-term) - Protocols**

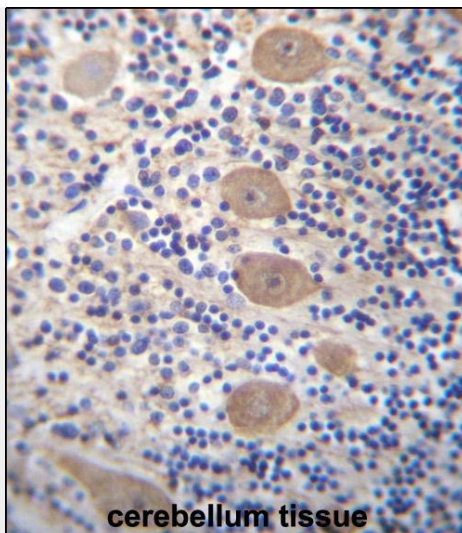
Provided below are standard protocols that you may find useful for product applications.

- [Western Blot](#)
- [Blocking Peptides](#)
- [Dot Blot](#)
- [Immunohistochemistry](#)
- [Immunofluorescence](#)
- [Immunoprecipitation](#)
- [Flow Cytometry](#)
- [Cell Culture](#)

**EAPP Antibody (C-term) - Images**



EAPP Antibody (C-term) (Cat. #AP12971b) western blot analysis in WiDr cell line lysates (35ug/lane). This demonstrates the EAPP antibody detected the EAPP protein (arrow).



EAPP Antibody (C-term) (Cat. #AP12971b) immunohistochemistry analysis in formalin fixed and paraffin embedded human cerebellum tissue followed by peroxidase conjugation of the secondary antibody and DAB staining. This data demonstrates the use of EAPP Antibody (C-term) for immunohistochemistry. Clinical relevance has not been evaluated.

#### **EAPP Antibody (C-term) - Background**

This gene encodes a phosphoprotein that interacts with several members of the E2F family of proteins. The protein localizes to the nucleus, and is present throughout the cell cycle except during mitosis. It functions to modulate E2F-regulated transcription and stimulate proliferation.

#### **EAPP Antibody (C-term) - References**

Schwarzmayr, L., et al. Int. J. Biochem. Cell Biol. 40(12):2845-2853(2008)  
Lamesch, P., et al. Genomics 89(3):307-315(2007)  
Olsen, J.V., et al. Cell 127(3):635-648(2006)  
Olsen, J.V., et al. Cell 127(3):635-648(2006)  
Lim, J., et al. Cell 125(4):801-814(2006)